

TAP HOLDERS



CUSTOM TOOLS

PRESETTERS

END MILL HOLDERS

SHELL MILL HOLDERS

MILLING CHUCKS

COLLET CHUCKS

HYDRAULIC CHUCKS

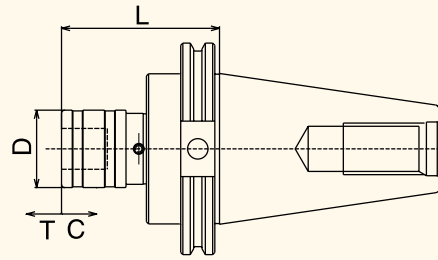
DRILL CHUCKS

TAP HOLDERS



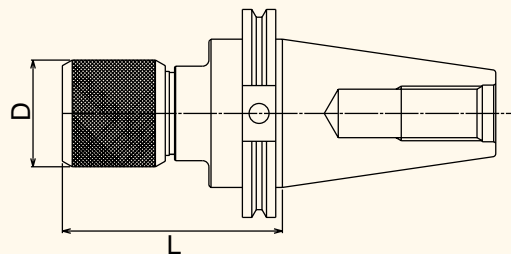
TAP HOLDERS

CT TAPER TENSION/COMPRESSION TAP HOLDERS



Part Number	Taper	Tap Range		System	L	D	T	C
		Hand	Pipe					
C40S5-0562	CT40	#0-9/16"	1/8"	#1	2.93"	1.43"	0.29"	0.29"
C4005-0562	CT40	#0-9/16"	1/8"	#1	4.47"	1.25"	0.79"	0.39"
C40S5-0875	CT40	5/16-7/8"	1/4-1/2"	#2	3.90"	2.09"	0.49"	0.49"
C4005-0875	CT40	5/16-7/8"	1/4-1/2"	#2	6.66"	2.00"	0.85"	0.49"
C40S5-1375	CT40	13/16-1-3/8"	1/2-1"	#3	5.75"	3.07"	0.79"	0.79"
C4005-1375	CT40	13/16-1-3/8"	1/2-1"	#3	9.19"	2.87"	0.98"	0.59"
C4505-0562	CT45	#0-9/16"	1/8"	#1	4.47"	1.25"	0.79"	0.39"
C4505-0875	CT45	5/16-7/8"	1/4-1/2"	#2	5.66"	2.00"	0.85"	0.49"
C4505-1375	CT45	13/16-1-3/8"	1/2-1"	#3	9.19"	2.87"	0.98"	0.59"
C50S5-0562	CT50	#0-9/16"	1/8"	#1	2.93"	1.43"	0.29"	0.29"
C5005-0562	CT50	#0-9/16"	1/8"	#1	5.02"	1.25"	0.79"	0.39"
C50S5-0875	CT50	5/16-7/8"	1/4-1/2"	#2	3.90"	2.09"	0.49"	0.49"
C5005-0875	CT50	5/16-7/8"	1/4-1/2"	#2	5.66"	2.00"	0.85"	0.49"
C50S5-1375	CT50	13/16-1-3/8"	1/2-1"	#3	5.75"	3.07"	0.79"	0.79"
C5005-1375	CT50	13/16-1-3/8"	1/2-1"	#3	7.72"	2.87"	0.98"	0.59"

CT TAPER RIGID TAP HOLDERS



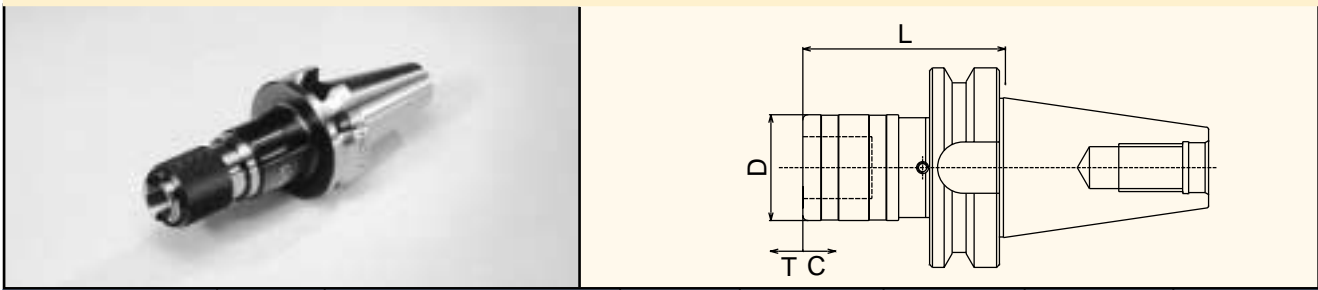
Part Number	Taper	Tap Range		System	L	D	
		Hand	Pipe				
C40R5-0562	CT40	#0-9/16"	1/8"	#1	3.02"	1.25"	These holders are designed for use with synchronized machining centers. The holders have no tension or compression.
C40R5-0875	CT40	5/16-7/8"	1/4-1/2"	#2	3.66"	2.00"	
C40R5-1375	CT40	13/16-1-3/8"	1/2-1"	#3	4.72"	2.87"	
C50R5-0562	CT50	#0-9/16"	1/8"	#1	3.02"	1.25"	
C50R5-0875	CT50	5/16-7/8"	1/4-1/2"	#2	3.91"	2.00"	
C50R5-1375	CT50	13/16-1-3/8"	1/2-1"	#3	4.98"	2.87"	

Note: Tap Collets are listed on pages 173-185.



TAP HOLDERS

BT TAPER TENSION/COMPRESSION TAP HOLDERS



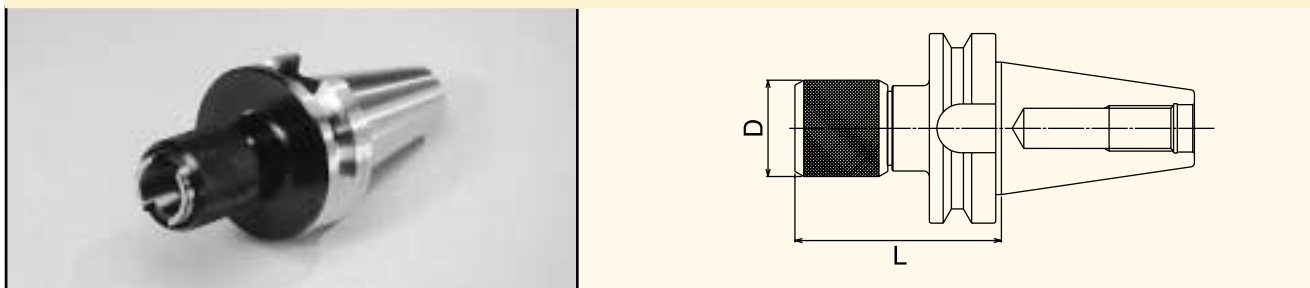
Part Number	Taper	Tap Range		System	L	D	T	C
		Hand	Pipe					
B30S5-0562	BT30	#0-9/16"	1/8"	#1	2.40"	1.43"	0.29"	0.29"
B3005-0562	BT30	#0-9/16"	1/8"	#1	4.92"	1.25"	0.79"	0.39"
B35S5-0562	BT35	#0-9/16"	1/8"	#1	2.48"	1.43"	0.29"	0.29"
B3505-0562	BT35	#0-9/16"	1/8"	#1	4.33"	1.25"	0.79"	0.39"
B3505-0875	BT35	5/16-7/8"	1/4-1/2"	#2	6.91"	2.00"	0.85"	0.49"
B40S5-0562	BT40	#0-9/16"	1/8"	#1	2.62"	1.43"	0.29"	0.29"
B4005-0562	BT40	#0-9/16"	1/8"	#1	4.33"	1.25"	0.79"	0.39"
B40S5-0875	BT40	5/16-7/8"	1/4-1/2"	#2	3.68"	2.09"	0.49"	0.49"
B4005-0875	BT40	5/16-7/8"	1/4-1/2"	#2	6.34"	2.00"	0.85"	0.49"
B40S5-1375	BT40	13/16-1-3/8"	1/2-1"	#3	6.40"	3.07"	0.79"	0.79"
B4005-1375	BT40	13/16-1-3/8"	1/2-1"	#3	9.00"	2.87"	0.98"	0.59"
B4505-0562	BT45	#0-9/16"	1/8"	#1	4.92"	1.25"	0.79"	0.39"
B4505-0875	BT45	5/16-7/8"	1/4-1/2"	#2	5.94"	2.00"	0.85"	0.49"
B4505-1375	BT45	13/16-1-3/8"	1/2-1"	#3	9.19"	2.87"	0.98"	0.59"
B50S5-0562	BT50	#0-9/16"	1/8"	#1	3.05"	1.43"	0.29"	0.29"
B5005-0562	BT50	#0-9/16"	1/8"	#1	4.92"	1.25"	0.79"	0.39"
B50S5-0875	BT50	5/16-7/8"	1/4-1/2"	#2	4.00"	2.09"	0.49"	0.49"
B5005-0875	BT50	5/16-7/8"	1/4-1/2"	#2	5.55"	2.00"	0.85"	0.49"
B50S5-1375	BT50	13/16-1-3/8"	1/2-1"	#3	5.55"	3.07"	0.79"	0.79"
B5005-1375	BT50	13/16-1-3/8"	1/2-1"	#3	7.68"	2.87"	0.98"	0.59"

Note: HSK Taper Tap Holders are listed on pages 213-214.



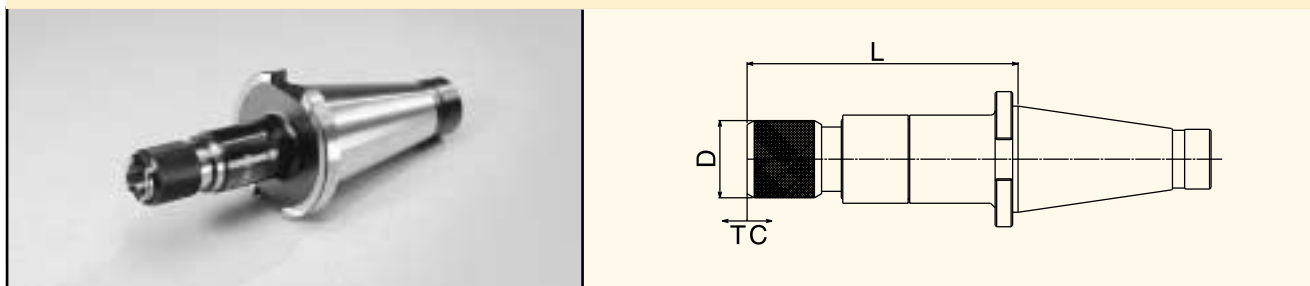
TAP HOLDERS

BT TAPER RIGID TAP HOLDERS



Part Number	Taper	Tap Range		System	L	D	
		Hand	Pipe				
B30R5-0562	BT30	#0-9/16"	1/8"	#1	2.44"	1.25"	These holders are designed for use with synchronized machining centers. The holders have no tension or compression.
B35R5-0562	BT35	#0-9/16"	1/8"	#1	3.02"	1.25"	
B35R5-0875	BT35	5/16-7/8"	1/4-1/2"	#2	3.66"	2.00"	
B40R5-0562	BT40	#0-9/16"	1/8"	#1	3.02"	1.25"	
B40R5-0875	BT40	5/16-7/8"	1/4-1/2"	#2	3.66"	2.00"	
B40R5-1375	BT40	13/16-1-3/8"	1/2-1"	#3	4.73"	2.87"	
B50R5-0562	BT50	#0-9/16"	1/8"	#1	3.02"	1.25"	
B50R5-0875	BT50	5/16-7/8"	1/4-1/2"	#2	4.16"	2.00"	
B50R5-1375	BT50	13/16-1-3/8"	1/2-1"	#3	5.23"	2.87"	

NMTB TAPER TENSION/COMPRESSION TAP HOLDERS



Part Number	Taper	Tap Range		System	L	D	T	C
		Hand	Pipe					
N3005-0562	NMTB30	#0-9/16"	1/8"	#1	4.64"	1.25"	0.79"	0.39"
N3005-0875	NMTB30	5/16-7/8"	1/4-1/2"	#2	6.16"	2.00"	0.85"	0.49"
N4005-0562	NMTB40	#0-9/16"	1/8"	#1	3.90"	1.25"	0.79"	0.39"
N4005-0875	NMTB40	5/16-7/8"	1/4-1/2"	#2	6.16"	2.00"	0.85"	0.49"
N5005-0562	NMTB50	#0-9/16"	1/8"	#1	4.50"	1.25"	0.79"	0.39"
N5005-0875	NMTB50	5/16-7/8"	1/4-1/2"	#2	7.00"	2.00"	0.85"	0.49"
N5005-1375	NMTB50	13/16-1-3/8"	1/2-1"	#3	7.73"	2.87"	0.98"	0.59"


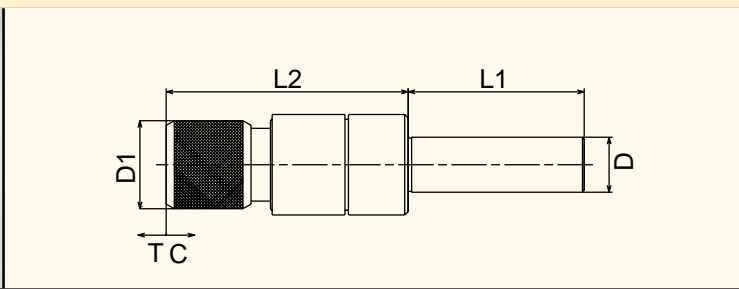
Note: All NMTB toolholder flanges are qualified for use with Erickson QC spindles.
 Tap Collets are listed on pages 173-185.

TAP HOLDERS

FEATURES OF STRAIGHT SHANK TOOLING


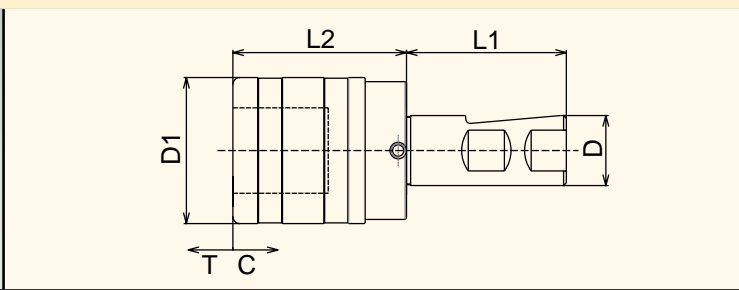
- Straight shank tooling may be used to extend tooling reach for extended length operations.
- This option is less costly than extended length integral shank tooling.
- They may be used with any size machining center or lathe.
- When loaded into larger holders, their reduced O.D. permits tapping applications within large holes or whenever tight clearances are encountered.

STRAIGHT SHANK TENSION/COMPRESSION TAP HOLDERS

Part Number	Tap Range		System	D	D1	L1	L2	T	C
	Hand	Pipe							
S1005-0562	#0-9/16"	1/8"	#1	1"	1.25"	3.50"	4.13"	0.79"	0.39"
S1005-0875	5/16-7/8"	1/4-1/2"	#2	1"	2.00"	3.50"	5.55"	0.85"	0.49"
S1205-0562	#0-9/16"	1/8"	#1	1-1/4"	1.25"	4.00"	4.13"	0.79"	0.39"
S1205-0875	5/16-7/8"	1/4-1/2"	#2	1-1/4"	2.00"	4.00"	5.55"	0.85"	0.49"

WELDON SHANK TENSION/COMPRESSION TAP HOLDERS

Part Number	Tap Range		System	D	D1	L1	L2	T	C
	Hand	Pipe							
W7505-0562	#0-9/16"	1/8"	#1	3/4"	1.25"	2.03"	4.33"	0.79"	0.39"
W1005-0562	#0-9/16"	1/8"	#1	1"	1.25"	2.28"	4.13"	0.79"	0.39"
W10S5-0562	#0-9/16"	1/8"	#1	1"	1.43"	2.28"	1.53"	0.29"	0.29"
W1005-0875	5/16-7/8"	1/4-1/2"	#2	1"	2.00"	2.28"	5.55"	0.85"	0.49"
W10S5-0875	5/16-7/8"	1/4-1/2"	#2	1"	2.09"	2.28"	2.48"	0.49"	0.49"
W1205-0562	#0-9/16"	1/8"	#1	1-1/4"	1.25"	2.28"	4.13"	0.79"	0.39"
W1205-0875	5/16-7/8"	1/4-1/2"	#2	1-1/4"	2.00"	2.28"	5.55"	0.85"	0.49"
W1505-0562	#0-9/16"	1/8"	#1	1-1/2"	1.25"	2.69"	4.13"	0.79"	0.39"
W1505-0875	5/16-7/8"	1/4-1/2"	#2	1-1/2"	2.00"	2.69"	5.55"	0.85"	0.49"
W1505-1375	13/16-1-3/8"	1/2-1"	#3	1-1/2"	2.87"	2.69"	7.81"	0.98"	0.59"
W15S5-1375	13/16-1-3/8"	1/2-1"	#3	1-1/2"	3.07"	2.69"	3.86"	0.79"	0.79"
W25M5-0562	#0-9/16"	1/8"	#1	25mm	36mm	57mm	39mm	7.5mm	7.5mm
W25M5-0875	5/16-7/8"	1/4-1/2"	#2	25mm	53mm	57mm	63mm	12.5mm	12.5mm

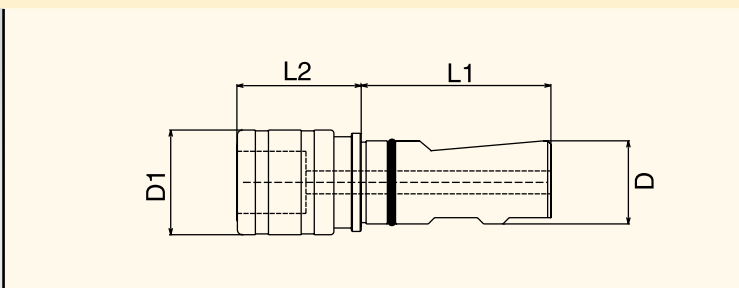
Note: HSK Taper Tap Holders are listed on pages 213-214.



CUSTOM TOOLS
 PRESETTERS
 END MILL HOLDERS
 SHELL MILL HOLDERS
 MILLING CHUCKS
 COLLET CHUCKS
 HYDRAULIC CHUCKS
 DRILL CHUCKS
 TAP HOLDERS

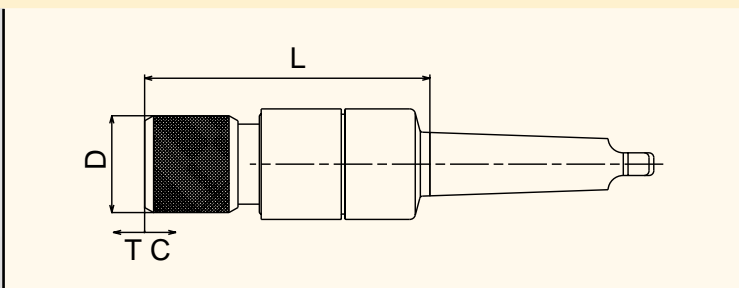
TAP HOLDERS

WELDON SHANK RIGID TAP HOLDERS



Part Number	Tap Range		System	D	D1	L1	L2
	Hand	Pipe					
W10R5-0562	#0-9/16"	1/8"	#1	1"	1.26"	2.28"	1.46"
W10R5-0875	5/16-7/8"	1/4-1/2"	#2	1"	1.97"	2.28"	2.12"
W15R5-1375	13/16-1-3/8"	1/2-1"	#3	1-1/2"	2.83"	2.69"	3.27"
W25MR5-0562	#0-9/16"	1/8"	#1	25mm	32mm	57mm	37mm
W25MR5-0875	5/16-7/8"	1/4-1/2"	#2	25mm	50mm	57mm	56mm

MORSE TAPER TENSION/COMPRESSION TAP HOLDERS



Part Number	Tap Range		System	D	L	T	C
	Hand	Pipe					
M0205-0562	#0-9/16"	1/8"	#1	1.25"	4.92"	0.79"	0.39"
M0205-0875	5/16-7/8"	1/4-1/2"	#2	2.00"	5.94"	0.85"	0.49"
M0305-0562	#0-9/16"	1/8"	#1	1.25"	4.72"	0.79"	0.39"
M0305-0875	5/16-7/8"	1/4-1/2"	#2	2.00"	5.94"	0.85"	0.49"
M0405-0562	#0-9/16"	1/8"	#1	1.25"	4.72"	0.79"	0.39"
M0405-0875	5/16-7/8"	1/4-1/2"	#2	2.00"	5.94"	0.85"	0.49"

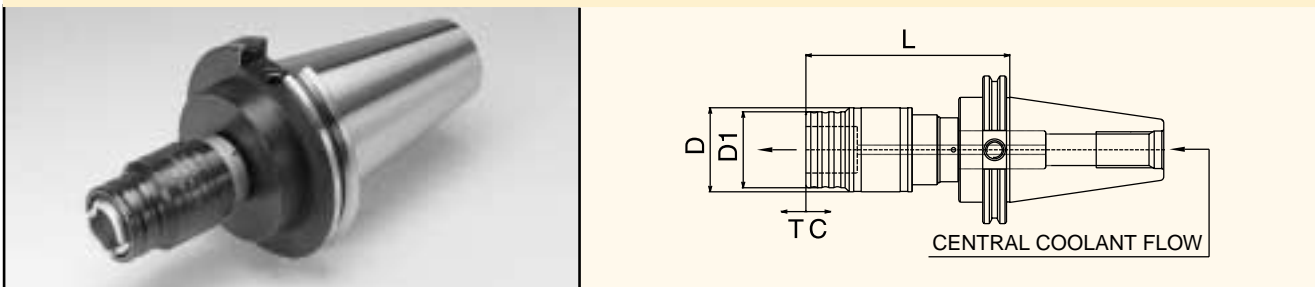
Note: Tap Collets are listed on pages 173-185.

TAP HOLDERS

COOLANT-THRU TAP HOLDERS

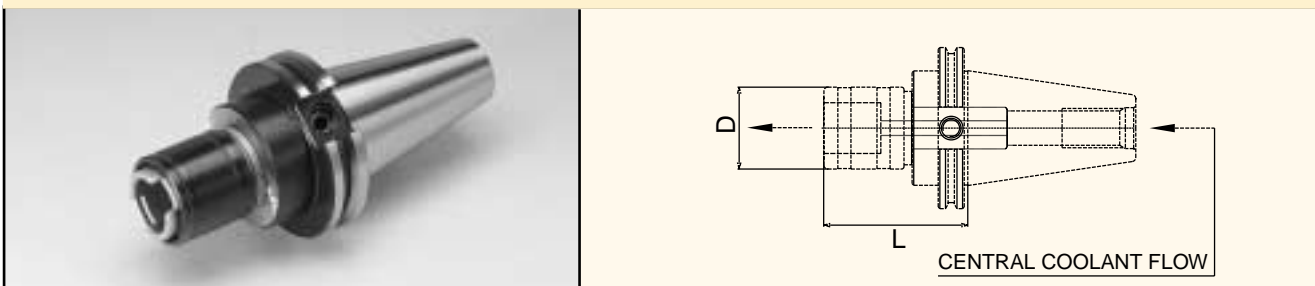
Coolant-thru tap holders facilitate chip removal, which reduces chip welding to the tap and gauling the wall of the workpiece. By delivering coolant to the cutting edge, at up to 750 PSI and flushing out chips, they're ideal for use in deep or blind-hole tapping operations.

CT TAPER COOLANT-THRU TENSION/COMPRESSION TAP HOLDERS



Part Number	Taper	Tap Range		System	L	D	D1	T	C
		Hand	Pipe						
C4005-0562(C)	CT40	#0-9/16"	1/8"	#1	3.98"	1.57"	1.28"	0.27"	0.12"
C4005-0875(C)	CT40	5/16-7/8"	1/4-1/2"	#2	5.39"	2.20"	1.99"	0.39"	0.20"
C5005-0562(C)	CT50	#0-9/16"	1/8"	#1	3.98"	1.57"	1.28"	0.27"	0.12"
C5005-0875(C)	CT50	5/16-7/8"	1/4-1/2"	#2	5.39"	2.20"	1.99"	0.39"	0.20"
C5005-1375(C)	CT50	13/16-1-3/8"	1/2-1"	#3	8.31"	2.95"	2.95"	0.71"	0.51"

CT TAPER COOLANT-THRU RIGID TAP HOLDERS



Part Number	Taper	Tap Range		System	L	D	These holders are designed for use with synchronized machining centers. The holders have no tension or compression.
		Hand	Pipe				
C40R5-0562(C)	CT40	#0-9/16"	1/8"	#1	2.87"	1.26"	
C40R5-0875(C)	CT40	5/16-7/8"	1/4-1/2"	#2	3.50"	1.97"	
C50R5-0562(C)	CT50	#0-9/16"	1/8"	#1	2.87"	1.26"	
C50R5-0875(C)	CT50	5/16-7/8"	1/4-1/2"	#2	3.50"	1.97"	
C50R5-1375(C)	CT50	13/16-1-3/8"	1/2-1"	#3	5.00"	2.83"	

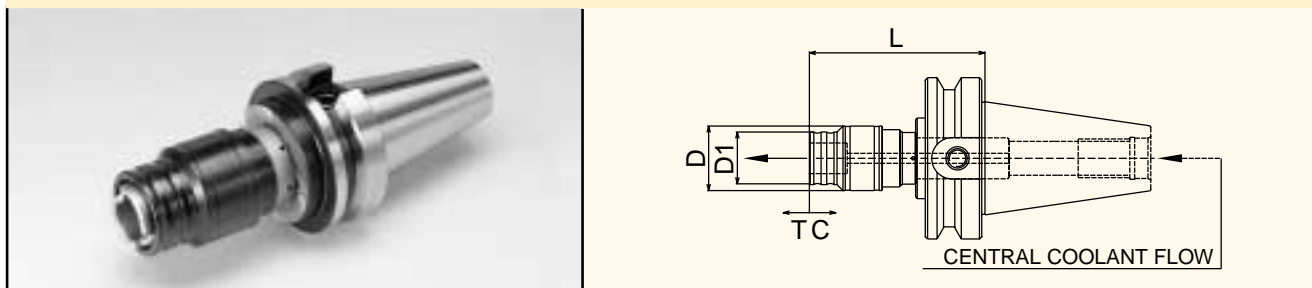
Note: HSK Taper Tap Holders are listed on pages 213-214.



CUSTOM TOOLS
 PRESETTERS
 END MILL HOLDERS
 SHELL MILL HOLDERS
 MILLING CHUCKS
 COLLET CHUCKS
 HYDRAULIC CHUCKS
 DRILL CHUCKS
 TAP HOLDERS

TAP HOLDERS

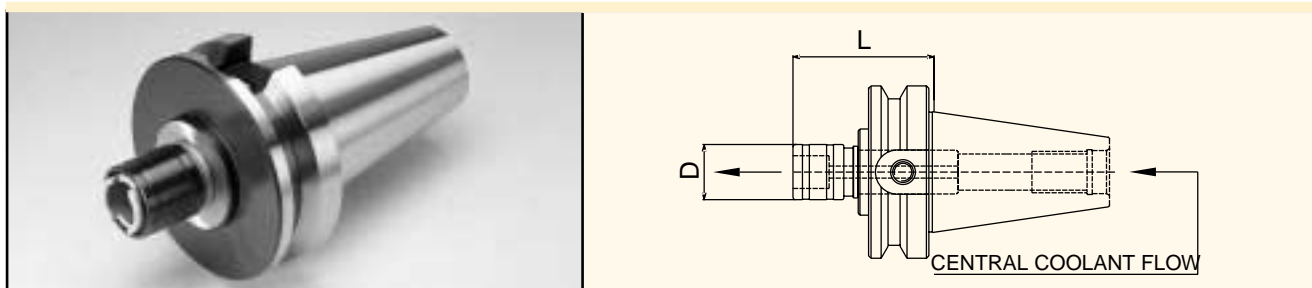
BT TAPER COOLANT-THRU TENSION/COMPRESSION TAP HOLDERS



Part Number	Taper	Tap Range		System	L	D	D1	T	C
		Hand	Pipe						
B4005-0562(C)	BT40	#0-9/16"	1/8"	#1	3.98"	1.57"	1.28"	0.27"	0.12"
B4005-0875(C)	BT40	5/16-7/8"	1/4-1/2"	#2	5.39"	2.20"	1.99"	0.39"	0.20"
B5005-0562(C)	BT50	#0-9/16"	1/8"	#1	4.33"	1.57"	1.28"	0.27"	0.12"
B5005-0875(C)	BT50	5/16-7/8"	1/4-1/2"	#2	5.75"	2.20"	1.99"	0.39"	0.20"
B5005-1375(C)	BT50	13/16-1-3/8"	1/2-1"	#3	8.31"	2.95"	2.91"	0.71"	0.51"

Note: Maximum allowable coolant pressure of 750 PSI.

BT TAPER COOLANT-THRU RIGID TAP HOLDERS

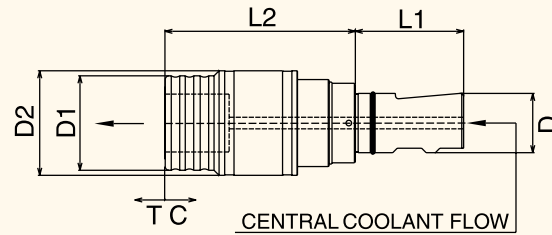


Part Number	Taper	Tap Range		System	L	D	
		Hand	Pipe				
B40R5-0562(C)	BT40	#0-9/16"	1/8"	#1	2.87"	1.26"	These holders are designed for use with synchronized machining centers. The holders have no tension or compression.
B40R5-0875(C)	BT40	5/16-7/8"	1/4-1/2"	#2	3.50"	1.97"	
B50R5-0562(C)	BT50	#0-9/16"	1/8"	#1	3.23"	1.26"	
B50R5-0875(C)	BT50	5/16-7/8"	1/4-1/2"	#2	3.86"	1.97"	
B50R5-1375(C)	BT50	13/16-1-3/8"	1/2-1"	#3	5.00"	2.83"	

Note: Tap Collets are listed on pages 173-185.

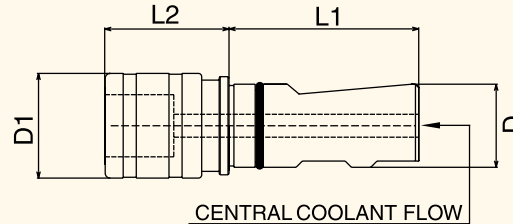
TAP HOLDERS

WELDON SHANK TENSION/COMPRESSION COOLANT-THRU TAP HOLDERS



Part Number	Tap Range		System	D	D1	L1	L2	T	C	D2
	Hand	Pipe								
W1005-0562(C)	#0-9/16"	1/8"	#1	1"	1.29"	2.28"	2.60"	0.27"	0.12"	1.57"
W1005-0875(C)	5/16-7/8"	1/4-1/2"	#2	1"	1.99"	2.28"	4.02"	0.39"	0.20"	2.20"
W1205-0562(C)	#0-9/16"	1/8"	#1	1-1/4"	1.28"	2.28"	2.60"	0.27"	0.12"	1.57"
W1205-0875(C)	5/16-7/8"	1/4-1/2"	#2	1-1/4"	1.99"	2.28"	4.02"	0.39"	0.20"	2.20"
W1505-1375(C)	13/16-1-3/8"	1/2-1"	#3	1-1/2"	2.95"	2.69"	6.57"	0.71"	0.51"	2.95"
W25M5-0562(C)	#0-9/16"	1/8"	#1	25mm	32mm	53mm	66mm	7mm	3mm	40mm
W25M5-0875(C)	5/16-7/8"	1/4-1/2"	#2	25mm	50mm	53mm	102mm	10mm	5mm	56mm

WELDON SHANK RIGID COOLANT-THRU TAP HOLDERS



Part Number	Tap Range		System	D	D1	L1	L2	
	Hand	Pipe						
W75R5-0562(C)	#0-9/16"	1/8"	#1	3/4"	1.26"	2.03"	1.46"	These holders are designed for use with synchronized machining centers. The holders have no tension or compression.
W10R5-0562(C)	#0-9/16"	1/8"	#1	1"	1.26"	2.28"	1.49"	
W10R5-0875(C)	5/16-7/8"	1/4-1/2"	#2	1"	1.97"	2.28"	2.12"	
W12R5-0562(C)	#0-9/16"	1/8"	#1	1-1/4"	1.26"	2.28"	1.65"	
W12R5-0875(C)	5/16-7/8"	1/4-1/2"	#2	1-1/4"	1.97"	2.28"	2.12"	
W12R5-1375(C)	13/16-1-3/8"	1/2-1"	#3	1-1/4"	2.83"	2.28"	3.27"	
W15R5-1375(C)	13/16-1-3/8"	1/2-1"	#3	1-1/2"	2.83"	2.69"	3.27"	
W25MR5-0562(C)	#0-9/16"	1/8"	#1	25mm	32mm	53mm	38mm	
W25MR5-0875(C)	5/16-7/8"	1/4-1/2"	#2	25mm	50mm	53mm	54mm	

Note: HSK Taper Tap Holders are listed on pages 213-214.




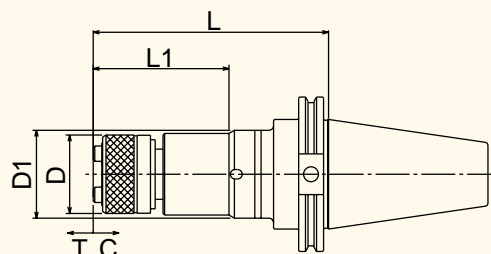
CUSTOM TOOLS
PRESETTERS
END MILL HOLDERS
SHELL MILL HOLDERS
MILLING CHUCKS
COLLET CHUCKS
HYDRAULIC CHUCKS
DRILL CHUCKS
TAP HOLDERS

TAP HOLDERS


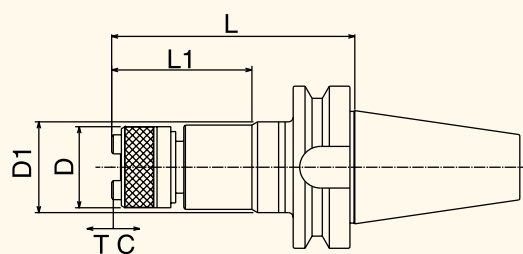
AUTO DEPTH CONTROL TAP HOLDERS

These holders assure accurate, effective tapping depth of blind holes and tapered screws regardless of spindle inertia and working material. Auto Depth Control Tap Holders may be utilized similar to standard tension/compression tap holders, providing you with added versatility.

CT TAPER AUTO DEPTH CONTROL TENSION/COMPRESSION TAP HOLDERS

										
Part Number	Taper	Tap Range		System	L	L1	D	D1	T	C
		Hand	Pipe							
C40A5-0562	CT40	#0-9/16"	1/8"	#1	5.05"	2.43"	1.26"	1.54"	0.63"	0.23"
C40A5-0875	CT40	5/16-7/8"	1/4-1/2"	#2	5.91"	3.41"	1.97"	2.21"	0.63"	0.23"
C50A5-0562	CT50	#0-9/16"	1/8"	#1	5.05"	2.43"	1.26"	1.54"	0.63"	0.23"
C50A5-0875	CT50	5/16-7/8"	1/4-1/2"	#2	5.91"	3.41"	1.97"	2.21"	0.63"	0.23"
C50A5-1375	CT50	13/16-1-3/8"	1/2-1"	#3	7.48"	4.67"	2.83"	3.15"	0.78"	0.39"

BT TAPER AUTO DEPTH CONTROL TENSION/COMPRESSION TAP HOLDERS

										
Part Number	Taper	Tap Range		System	L	L1	D	D1	T	C
		Hand	Pipe							
B40A5-0562	BT40	#0-9/16"	1/8"	#1	4.45"	2.43"	1.26"	1.54"	0.63"	0.23"
B40A5-0875	BT40	5/16-7/8"	1/4-1/2"	#2	5.32"	3.41"	1.97"	2.21"	0.63"	0.23"
B50A5-0562	BT50	#0-9/16"	1/8"	#1	5.05"	2.43"	1.26"	1.54"	0.63"	0.23"
B50A5-0875	BT50	5/16-7/8"	1/4-1/2"	#2	5.91"	3.41"	1.97"	2.21"	0.63"	0.23"
B50A5-1375	BT50	13/16 - 1-3/8"	1/2-1"	#3	7.13"	4.67"	2.83"	3.15"	0.78"	0.39"

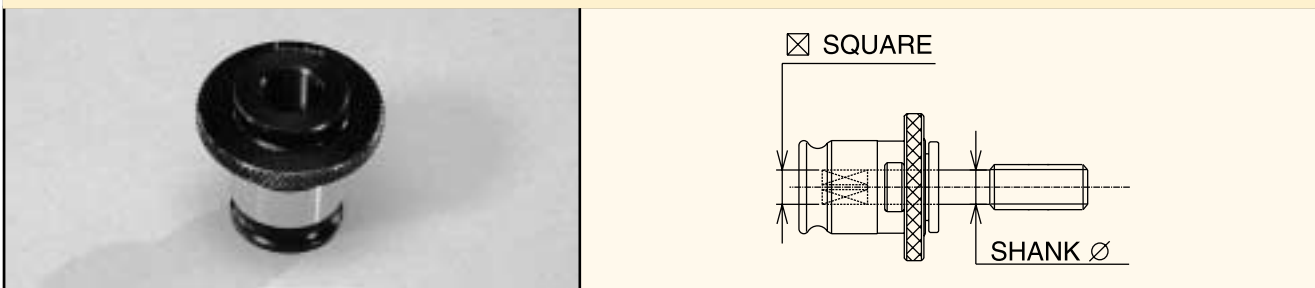
Note: HSK Taper Tap Holders are listed on pages 213-214.

TAP HOLDERS

POSITIVE DRIVE TAP COLLETS

- Standard collets are used for standard and coolant-thru-the-tool tapping, maximum 750 PSI.
- Slotted collets are designed for use with standard taps for coolant along the flute.
- Extended length (CEN and CESN) styles are available in the Lyndex Automotive Catalog.

POSITIVE DRIVE TAP COLLETS - STANDARD



Part Number	Tap Size	System	Tap Shank ϕ	Drive Square \boxtimes
NT05-006	#0-6	#1	0.141"	0.110"
NT05-008	#8	#1	0.168"	0.131"
NT05-010	#10	#1	0.194"	0.152"
NT05-012	#12	#1	0.220"	0.165"
NT05-016	1/4"	#1	0.255"	0.191"
NT05-020	5/16"	#1	0.318"	0.238"
NT05-024	3/8"	#1	0.381"	0.286"
NT05-028	7/16"	#1	0.323"	0.242"
NT05-032	1/2"	#1	0.367"	0.275"
NT05-036	9/16"	#1	0.429"	0.322"
NT10-020	5/16"	#2	0.318"	0.238"
NT10-024	3/8"	#2	0.381"	0.286"
NT10-028	7/16"	#2	0.323"	0.242"
NT10-032	1/2"	#2	0.367"	0.275"
NT10-036	9/16"	#2	0.429"	0.322"
NT10-040	5/8"	#2	0.480"	0.360"
NT10-044	11/16"	#2	0.542"	0.406"
NT10-048	3/4"	#2	0.590"	0.442"
NT10-052	13/16"	#2	0.652"	0.489"
NT10-056	7/8"	#2	0.697"	0.523"
NT15-052	13/16"	#3	0.652"	0.489"
NT15-056	7/8"	#3	0.697"	0.523"
NT15-060	15/16"	#3	0.760"	0.570"
NT15-064	1"	#3	0.800"	0.600"
NT15-072	1-1/8"	#3	0.896"	0.672"
NT15-080	1-1/4"	#3	1.021"	0.766"
NT15-088	1-3/8"	#3	1.108"	0.831"

See dimensional data for tap collets on page 187.



TAP HOLDERS

CUSTOM TOOLS

PRESETTERS

END MILL HOLDERS

SHELL MILL HOLDERS

MILLING CHUCKS

COLLET CHUCKS

HYDRAULIC CHUCKS

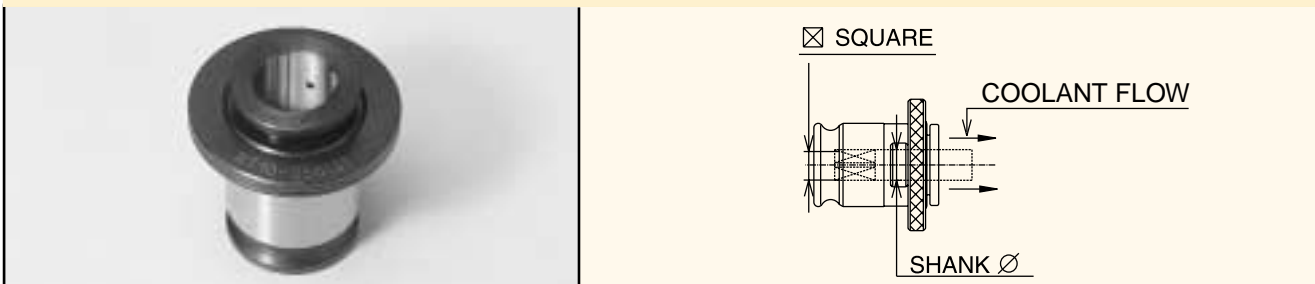
DRILL CHUCKS

TAP HOLDERS

POSITIVE DRIVE TAP COLLETS

- Standard collets are used for standard and coolant-thru-the-tool tapping, maximum 750 PSI.
- Slotted collets are designed for use with standard taps for coolant along the flute.
- Extended length (CEN and CESN) styles are available in the Lyndex Automotive Catalog.

POSITIVE DRIVE TAP COLLETS - SLOTTED



Part Number	Tap Size	System	Tap Shank ϕ	Drive Square \boxtimes
NT05-006(S)	#0-6	#1	0.141"	0.110"
NT05-008(S)	#8	#1	0.168"	0.131"
NT05-010(S)	#10	#1	0.194"	0.152"
NT05-012(S)	#12	#1	0.220"	0.165"
NT05-016(S)	1/4"	#1	0.255"	0.191"
NT05-020(S)	5/16"	#1	0.318"	0.238"
NT05-024(S)	3/8"	#1	0.381"	0.286"
NT05-028(S)	7/16"	#1	0.323"	0.242"
NT05-032(S)	1/2"	#1	0.367"	0.275"
NT05-036(S)	9/16"	#1	0.429"	0.322"
NT10-020(S)	5/16"	#2	0.318"	0.238"
NT10-024(S)	3/8"	#2	0.381"	0.286"
NT10-028(S)	7/16"	#2	0.323"	0.242"
NT10-032(S)	1/2"	#2	0.367"	0.275"
NT10-036(S)	9/16"	#2	0.429"	0.322"
NT10-040(S)	5/8"	#2	0.480"	0.360"
NT10-044(S)	11/16"	#2	0.542"	0.406"
NT10-048(S)	3/4"	#2	0.590"	0.442"
NT10-052(S)	13/16"	#2	0.652"	0.489"
NT10-056(S)	7/8"	#2	0.697"	0.523"
NT15-052(S)	13/16"	#3	0.652"	0.489"
NT15-056(S)	7/8"	#3	0.697"	0.523"
NT15-060(S)	15/16"	#3	0.760"	0.570"
NT15-064(S)	1"	#3	0.800"	0.600"
NT15-072(S)	1-1/8"	#3	0.896"	0.672"
NT15-080(S)	1-1/4"	#3	1.021"	0.766"
NT15-088(S)	1-3/8"	#3	1.108"	0.831"



TAP HOLDERS

POSITIVE DRIVE PIPE TAP COLLETS - STANDARD

Part Number	Tap Size	System	Tap Shank ϕ	Drive Square \boxtimes
NTPT05-008S	1/8" S	#1	0.313"	0.234"
NTPT05-008L	1/8" L	#1	0.437"	0.328"
NTPT10-016	1/4"	#2	0.562"	0.421"
NTPT10-024	3/8"	#2	0.700"	0.531"
NTPT10-032	1/2"	#2	0.687"	0.515"
NTPT15-032	1/2"	#3	0.687"	0.515"
NTPT15-048	3/4"	#3	0.906"	0.679"
NTPT15-064	1"	#3	1.125"	0.843"

POSITIVE DRIVE PIPE TAP COLLETS - SLOTTED

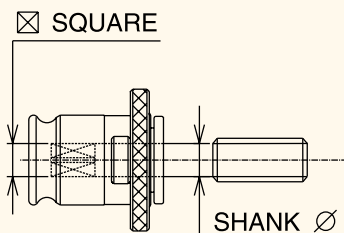
Part Number	Tap Size	System	Tap Shank ϕ	Drive Square \boxtimes
NTPT05-008S(S)	sm 1/8"	#1	0.313"	0.234"
NTPT05-008L(S)	lg 1/8"	#1	0.437"	0.328"
NTPT10-016(S)	1/4"	#2	0.562"	0.421"
NTPT10-024(S)	3/8"	#2	0.700"	0.531"
NTPT10-032(S)	1/2"	#2	0.687"	0.515"
NTPT15-032(S)	1/2"	#3	0.687"	0.515"
NTPT15-048(S)	3/4"	#3	0.906"	0.679"
NTPT15-064(S)	1/2"	#3	1.125"	0.843"

See dimensional data for tap collets on page 187.



TAP HOLDERS

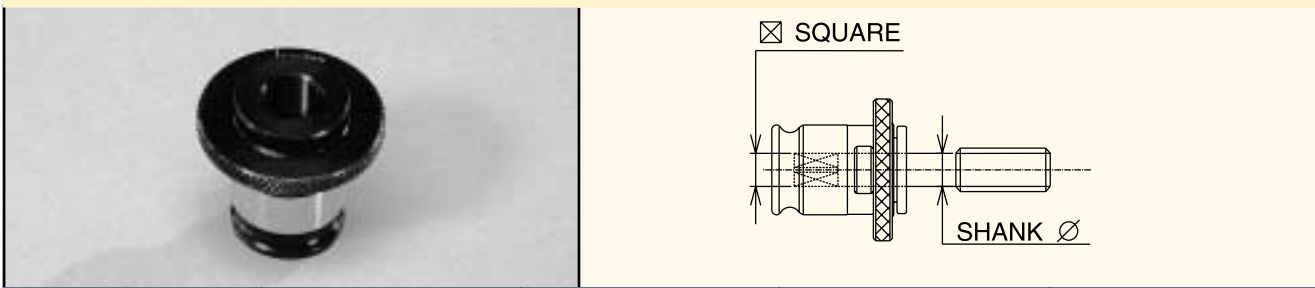
POSITIVE DRIVE TAP COLLETS (STANDARD) - ISO



Part Number	Tap Size	System	Tap Shank ϕ	Drive Square \boxtimes
SE1-2.24 x 1.8	M3	#1	2.24	1.8
SE1-2.50 x 2.0	M3.5, M2	#1	2.5	2.0
SE1-2.80 x 2.24	M2.5, M2.2	#1	2.8	2.2
SE1-3.15 x 2.50	M4, M3	#1	3.15	2.5
SE1-3.55 x 2.80	M4.5, M3.5	#1	3.55	2.8
SE1-4.0 x 3.15	M5, M4	#1	4.0	3.15
SE1-4.5 x 3.55	M6	#1	4.5	3.55
SE1-5.0 x 4.0	M5	#1	5.0	4.0
SE1-5.6 x 4.5	M5	#1	5.6	4.5
SE1-6.3 x 5.0	M8, M6	#1	6.3	5.0
SE1-7.1 x 5.6	M7	#1	7.1	5.6
SE1-8.0 x 6.3	M11, M10, M8	#1	8.0	6.3
SE1-9.0 x 7.1	M12, M9	#1	9.0	7.1
SE1-10.0 x 8.0	M10	#1	10.0	8.0
SE1-11.2 x 9.0	M14	#1	11.2	9.0
SE2-4.0 x 3.15	M5, M4	#2	4.0	3.15
SE2-4.5 x 3.55	M6	#2	4.5	3.55
SE2-5.0 x 4.0	M5	#2	5.0	4.0
SE2-5.6 x 4.5	M5	#2	5.6	4.5
SE2-6.3 x 5.0	M8, M6	#2	6.3	5.0
SE2-7.1 x 5.6	M7	#2	7.1	5.6
SE2-8.0 x 6.3	M11, M10, M8	#2	8.0	6.3
SE2-9.0 x 7.1	M12, M9	#2	9.0	7.1
SE2-10.0 x 8.0	M10	#2	10.0	8.0
SE2-11.2 x 9.0	M14	#2	11.2	9.0
SE2-12.5 x 10.0	M16	#2	12.5	10.0
SE2-14.0 x 11.2	M20, M18	#2	14.0	11.2
SE2-16.0 x 12.5	M22	#2	16.0	12.5
SE2-18.0 x 14.0	M24	#2	18.0	14.0
SE3-9.0 x 7.1	M12, M9	#3	9.0	7.1
SE3-10.0 x 8.0	M10	#3	10.0	8.0
SE3-11.2 x 9.0	M14	#3	11.2	9.0
SE3-12.5 x 10.0	M16	#3	12.5	10.0
SE3-14.0 x 11.2	M20, M18	#3	14.0	11.2
SE3-16.0 x 12.5	M22	#3	16.0	12.5
SE3-18.0 x 14.0	M24	#3	18.0	14.0
SE3-20.0 x 16.0	M30, M27	#3	20.0	16.0
SE3-22.4 x 18.0	M33	#3	22.4	18.0
SE3-25.0 x 20.0	M36, M33	#3	25.0	20.0
SE3-28.0 x 22.4	M42, M39	#3	28.0	22.4

TAP HOLDERS

POSITIVE DRIVE TAP COLLETS (STANDARD) - DIN 371/376

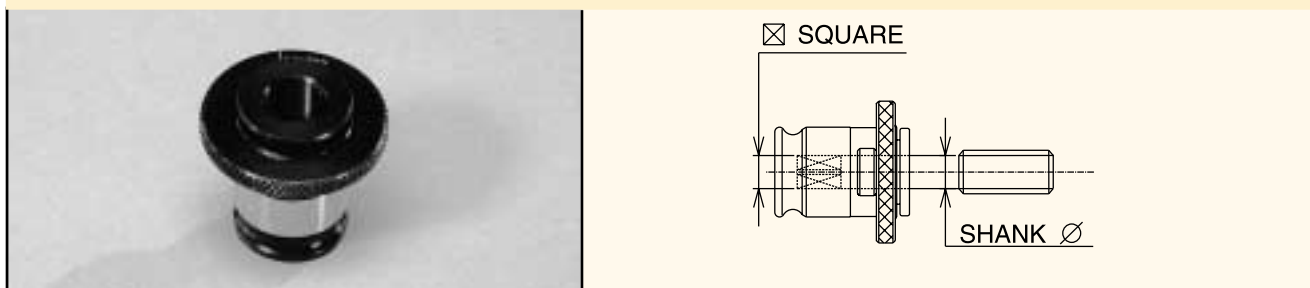


Part Number	Tap Size	System	Tap Shank ϕ	Drive Square \boxtimes
SE1-2.5 x 2.1	M1.4, M1.8, M3	#1	2.5	2.1
SE1-2.8 x 2.1	M2, M2.2, M2.5, M4	#1	2.8	2.1
SE1-3.5 x 2.7	M3, M5	#1	3.5	2.7
SE1-4.0 x 3.0	M3.5	#1	4.0	3.0
SE1-4.5 x 3.4	M4, M6	#1	4.5	3.4
SE1-6.0 x 4.9	M5, M6, M8	#1	6.0	4.9
SE1-7.0 x 5.5	M10	#1	7.0	5.5
SE1-8.0 x 6.2	M8, M10	#1	8.0	6.2
SE1-9.0 x 7.0	M12	#1	9.0	7.0
SE1-10.0 x 8.0	M10	#1	10.0	8.0
SE1-11.0 x 9.0	M14	#1	11.0	9.0
SE2-2.8 x 2.1	M2, M2.2, M2.5, M4	#2	2.8	2.1
SE2-3.5 x 2.7	M3, M5	#2	3.5	2.7
SE2-4.0 x 3.0	M3.5	#2	4.0	3.0
SE2-4.5 x 3.4	M4, M6	#2	4.5	3.4
SE2-6.0 x 4.9	M5, M6, M8	#2	6.0	4.9
SE2-7.0 x 5.5	M10	#2	7.0	5.5
SE2-8.0 x 6.2	M8, M10	#2	8.0	6.2
SE2-9.0 x 7.0	M12	#2	9.0	7.0
SE2-10.0 x 8.0	M10	#2	10.0	8.0
SE2-11.0 x 9.0	M14	#2	11.0	9.0
SE2-12.0 x 9.0	M16	#2	12.0	9.0
SE2-14.0 x 11.0	M18	#2	14.0	11.0
SE2-16.0 x 12.0	M20	#2	16.0	12.0
SE2-18.0 x 14.5	M22, M24	#2	18.0	14.5
SE3-9.0 x 7.0	M12	#3	9.0	7.0
SE3-10.0 x 8.0	M10	#3	10.0	8.0
SE3-11.0 x 9.0	M14	#3	11.0	9.0
SE3-12.0 x 9.0	M16	#3	12.0	9.0
SE3-14.0 x 11.0	M18	#3	14.0	11.0
SE3-16.0 x 12.0	M20	#3	16.0	12.0
SE3-18.0 x 14.5	M22, M24	#3	18.0	14.5
SE3-20.0 x 16.0	M27, M30	#3	20.0	16.0
SE3-22.0 x 18.0	M30	#3	22.0	18.0
SE3-25.0 x 20.0	M33, M36	#3	25.0	20.0
SE3-28.0 x 22.0	M36	#3	28.0	22.0



TAP HOLDERS

POSITIVE DRIVE TAP COLLETS (STANDARD) - JIS



Part Number	Tap Size	System	Tap Shank ϕ	Drive Square \boxtimes
SE1-3.0 x 2.5	M2	#1	3.0	2.5
SE1-4.0 x 3.2	M3	#1	4.0	3.2
SE1-5.0 x 4.0	M4, M4.5	#1	5.0	4.0
SE1-5.5 x 4.5	M5, M5.5	#1	5.5	4.5
SE1-6.0 x 4.5	M6	#1	6.0	4.5
SE1-6.2 x 5.0	M7, M8	#1	6.2	5.0
SE1-7.0 x 5.5	M9, M10	#1	7.0	5.5
SE1-8.0 x 6.0	M11	#1	8.0	6.0
SE1-8.5 x 6.5	M12	#1	8.5	6.5
SE1-9.5 x 7.0	M13	#1	9.5	7.0
SE1-10.5 x 8.0	M14, M15	#1	10.5	8.0
SE2-6.0 x 4.5	M6	#2	6.0	4.5
SE2-6.2 x 5.0	M7, M8	#2	6.2	5.0
SE2-7.0 x 5.5	M9, M10	#2	7.0	5.5
SE2-8.0 x 6.0	M11	#2	8.0	6.0
SE2-8.5 x 6.5	M12	#2	8.5	6.5
SE2-9.5 x 7.0	M13	#2	9.5	7.0
SE2-10.5 x 8.0	M14, M15	#2	10.5	8.0
SE2-12.5 x 10.0	M16	#2	12.5	10.0
SE2-13.0 x 10.0	M17	#2	13.0	10.0
SE2-14.0 x 11.0	M18	#2	14.0	11.0
SE2-15.0 x 12.0	M20	#2	15.0	12.0
SE2-17.0 x 13.0	M22	#2	17.0	13.0
SE3-10.5 x 8.0	M14, M15	#3	10.5	8.0
SE3-12.5 x 10.0	M16	#3	12.5	10.0
SE3-13.0 x 10.0	M17	#3	13.0	10.0
SE3-14.0 x 11.0	M18	#3	14.0	11.0
SE3-15.0 x 12.0	M20	#3	15.0	12.0
SE3-17.0 x 13.0	M22	#3	17.0	13.0
SE3-19.0 x 15.0	M24, M25	#3	19.0	15.0
SE3-20.0 x 15.0	M26, M27	#3	20.0	15.0
SE3-21.0 x 17.0	M28	#3	21.0	17.0
SE3-23.0 x 17.0	M30	#3	23.0	17.0
SE3-24.0 x 19.0	M32	#3	24.0	19.0
SE3-25.0 x 19.0	M33	#3	25.0	19.0
SE3-26.0 x 21.0	M34, M35	#3	26.0	21.0
SE3-28.0 x 21.0	M36, M38	#3	28.0	21.0

TAP HOLDERS

POSITIVE DRIVE TAP COLLET SETS

Part Number	Description
NT05-SET	10 piece System #1 Positive Drive Collet Set: #0 - 9/16" hand
NT10-SET	10 piece System #2 Positive Drive Collet Set: 5/16" - 7/8" hand
NT15-SET	7 piece System #3 Positive Drive Collet Set: 13/16" - 1-3/8" hand
NTP05-SET	12 piece System #1 Positive Drive Collet Set: #0 - 9/16" hand and 1/8" pipe
NTP10-SET	13 piece System #2 Positive Drive Collet Set: 5/16" - 1" hand and 1/4" - 1/2" pipe
NTP15-SET	10 piece System #3 Positive Drive Collet Set: 13/16" - 1-3/8" hand and 1/2" - 1" pipe

CUSTOM TOOLS

PRESETTERS

END MILL HOLDERS

SHELL MILL HOLDERS

MILLING CHUCKS

COLLET CHUCKS

HYDRAULIC CHUCKS

DRILL CHUCKS

TAP HOLDERS

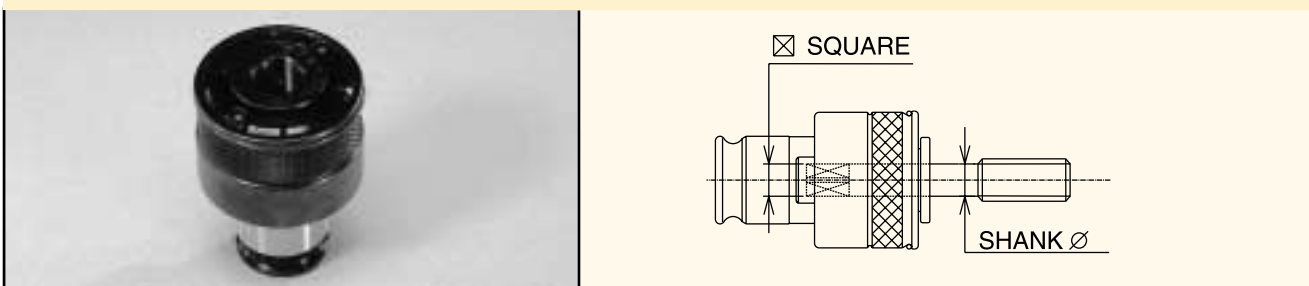


TAP HOLDERS

TORQUE CONTROL TAP COLLETS

- Standard collets are used for standard and coolant-thru-the-tool tapping. Maximum 750 PSI.
- Slotted collets are designed for use with standard taps for coolant along the flute.
- Extended length (CEN and CESN) styles are available in the Lyndex Automotive Catalog.

TORQUE CONTROL TAP COLLETS - STANDARD



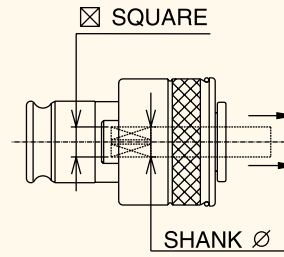
Part Number	Tap Size	System	Tap Shank ϕ	Drive Square \boxtimes
T05-006	#0-6	#1	0.141"	0.110"
T05-008	#8	#1	0.168"	0.131"
T05-010	#10	#1	0.194"	0.152"
T05-012	#12	#1	0.220"	0.165"
T05-016	1/4"	#1	0.255"	0.191"
T05-020	5/16"	#1	0.318"	0.238"
T05-024	3/8"	#1	0.381"	0.286"
T05-028	7/16"	#1	0.323"	0.242"
T05-032	1/2"	#1	0.367"	0.275"
T05-036	9/16"	#1	0.429"	0.322"
T10-020	5/16"	#2	0.318"	0.238"
T10-024	3/8"	#2	0.381"	0.286"
T10-028	7/16"	#2	0.323"	0.242"
T10-032	1/2"	#2	0.367"	0.275"
T10-036	9/16"	#2	0.429"	0.322"
T10-040	5/8"	#2	0.480"	0.360"
T10-044	11/16"	#2	0.542"	0.406"
T10-048	3/4"	#2	0.590"	0.442"
T10-052	13/16"	#2	0.652"	0.489"
T10-056	7/8"	#2	0.697"	0.523"
T10-064*	1"	#2	0.800"	0.600"
T15-052	13/16"	#3	0.652"	0.489"
T15-056	7/8"	#3	0.697"	0.523"
T15-060	15/16"	#3	0.760"	0.570"
T15-064	1"	#3	0.800"	0.600"
T15-072	1-1/8"	#3	0.896"	0.672"
T15-080	1-1/4"	#3	1.021"	0.766"
T15-088	1-3/8"	#3	1.108"	0.831"

*Note: This collet is not a quick change collet.



TAP HOLDERS

TORQUE CONTROL TAP COLLETS - SLOTTED



Part Number	Tap Size	System	Tap Shank ϕ	Drive Square \boxtimes
T05-006(S)	#0-6	#1	0.141"	0.110"
T05-008(S)	#8	#1	0.168"	0.131"
T05-010(S)	#10	#1	0.194"	0.152"
T05-012(S)	#12	#1	0.220"	0.165"
T05-016(S)	1/4"	#1	0.255"	0.191"
T05-020(S)	5/16"	#1	0.318"	0.238"
T05-024(S)	3/8"	#1	0.381"	0.286"
T05-028(S)	7/16"	#1	0.323"	0.242"
T05-032(S)	1/2"	#1	0.367"	0.275"
T05-036(S)	9/16"	#1	0.429"	0.322"
T10-020(S)	5/16"	#2	0.318"	0.238"
T10-024(S)	3/8"	#2	0.381"	0.286"
T10-028(S)	7/16"	#2	0.323"	0.242"
T10-032(S)	1/2"	#2	0.367"	0.275"
T10-036(S)	9/16"	#2	0.429"	0.322"
T10-040(S)	5/8"	#2	0.480"	0.360"
T10-044(S)	11/16"	#2	0.542"	0.406"
T10-048(S)	3/4"	#2	0.590"	0.442"
T10-052(S)	13/16"	#2	0.652"	0.489"
T10-056(S)	7/8"	#2	0.697"	0.523"
T10-064(S)*	1"	#2	0.800"	0.600"
T15-052(S)	13/16"	#3	0.652"	0.489"
T15-056(S)	7/8"	#3	0.697"	0.523"
T15-060(S)	15/16"	#3	0.760"	0.570"
T15-064(S)	1"	#3	0.800"	0.600"
T15-072(S)	1-1/8"	#3	0.896"	0.672"
T15-080(S)	1-1/4"	#3	1.021"	0.766"
T15-088(S)	1-3/8"	#3	1.108"	0.831"

*Note: This collet is not a quick change collet.

See dimensional data for tap Collets on page 187.



TAP HOLDERS

TORQUE CONTROL TAP COLLETS

- Standard collets are used for standard and coolant-thru-the-tool tapping. Maximum 750 PSI.
- Slotted collets are designed for use with standard taps for coolant along the flute.
- Extended length (CEN and CESN) styles are available in the Lyndex Automotive Catalog.

TORQUE CONTROL PIPE TAP COLLETS - STANDARD

Part Number	Tap Size	System	Tap Shank ϕ	Drive Square ☒
TPT05-008S	1/8" S	#1	0.313"	0.234"
TPT05-008L	1/8" L	#1	0.437"	0.328"
TPT10-016	1/4"	#2	0.562"	0.421"
TPT10-024	3/8"	#2	0.700"	0.531"
TPT10-032	1/2"	#2	0.687"	0.515"
TPT15-032	1/2"	#3	0.687"	0.515"
TPT15-048	3/4"	#3	0.906"	0.679"
TPT15-064	1"	#3	1.125"	0.843"

TORQUE CONTROL PIPE TAP COLLETS - SLOTTED

Part Number	Tap Size	System	Tap Shank ϕ	Drive Square ☒
TPT05-008S(S)	1/8" S	#1	0.313"	0.234"
TPT05-008L(S)	1/8" L	#1	0.437"	0.328"
TPT10-016(S)	1/4"	#2	0.562"	0.421"
TPT10-024(S)	3/8"	#2	0.700"	0.531"
TPT10-032(S)	1/2"	#2	0.687"	0.515"
TPT15-032(S)	1/2"	#3	0.687"	0.515"
TPT15-048(S)	3/4"	#3	0.906"	0.679"
TPT15-064(S)	1"	#3	1.125"	0.843"

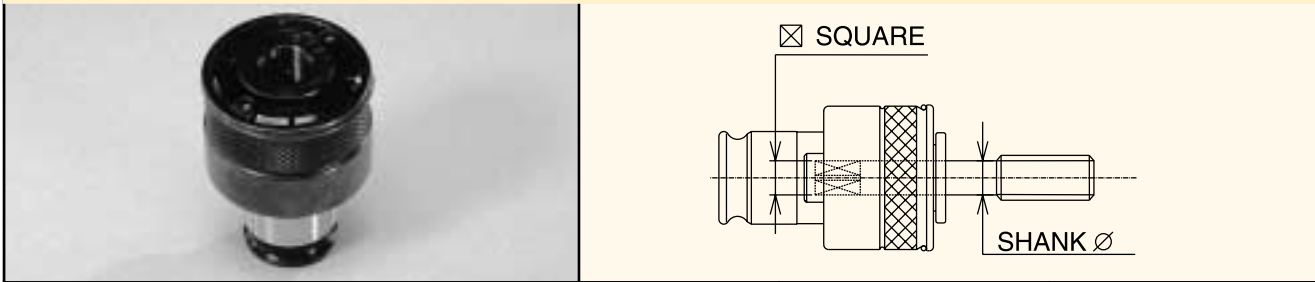
TORQUE CONTROL TAP COLLET SETS

Part Number	Description
T05-SET	10 piece System #1 Torque Control Collet Set: #0 - 9/16" hand
T10-SET	11 piece System #2 Torque Control Collet Set: 5/16" - 1" hand
T15-SET	7 piece System #3 Torque Control Collet Set: 13/16" - 1-3/8" hand
TP05-SET	12 piece System #1 Torque Control Collet Set: #0 - 9/16" hand and 1/8" pipe
TP10-SET	14 piece System #2 Torque Control Collet Set: 5/16" - 1" hand and 1/4" - 1/2" pipe
TP15-SET	10 piece System #3 Torque Control Collet Set: 13/16" - 1-3/8" hand and 1/2" - 1" pipe



TAP HOLDERS

TORQUE CONTROL TAP COLLETS (STANDARD) - ISO



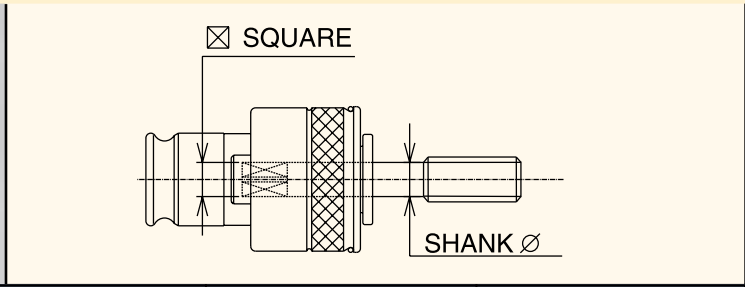
Part Number	Tap Size	System	Tap Shank ϕ	Drive Square \boxtimes
SES1-2.24 x 1.8	M3	#1	2.24	1.8
SES1-2.50 x 2.0	M3.5, M2	#1	2.5	2.0
SES1-2.80 x 2.24	M2.5, M2.2	#1	2.8	2.24
SES1-3.15 x 2.50	M4, M3	#1	3.15	2.5
SES1-3.55 x 2.80	M4.5, M3.5	#1	3.55	2.8
SES1-4.0 x 3.15	M5, M4	#1	4.0	3.15
SES1-4.5 x 3.55	M6	#1	4.5	3.55
SES1-5.0 x 4.0	M5	#1	5.0	4.0
SES1-5.6 x 4.5	M5	#1	5.6	4.5
SES1-6.3 x 5.0	M8, M6	#1	6.3	5.0
SES1-7.1 x 5.6	M7	#1	7.1	5.6
SES1-8.0 x 6.3	M11, M10, M8	#1	8.0	6.3
SES1-9.0 x 7.1	M12, M9	#1	9.0	7.1
SES1-10.0 x 8.0	M10	#1	10.0	8.0
SES1-11.2 x 9.0	M14	#1	11.2	9.0
SES2-4.0 x 3.15	M5, M4	#2	4.0	3.15
SES2-4.5 x 3.55	M6	#2	4.5	3.55
SES2-5.0 x 4.0	M5	#2	5.0	4.0
SES2-5.6 x 4.5	M5	#2	5.6	4.5
SES2-6.3 x 5.0	M8, M6	#2	6.3	5.0
SES2-7.1 x 5.6	M7	#2	7.1	5.6
SES2-8.0 x 6.3	M11, M10, M8	#2	8.0	6.3
SES2-9.0 x 7.1	M12, M9	#2	9.0	7.1
SES2-10.0 x 8.0	M10	#2	10.0	8.0
SES2-11.2 x 9.0	M14	#2	11.2	9.0
SES2-12.5 x 10.0	M16	#2	12.5	10.0
SES2-14.0 x 11.2	M20, M18	#2	14.0	11.2
SES2-16.0 x 12.5	M22	#2	16.0	12.5
SES2-18.0 x 14.0	M24	#2	18.0	14.0
SES3-9.0 x 7.1	M12, M9	#3	9.0	7.1
SES3-10.0 x 8.0	M10	#3	10.0	8.0
SES3-11.2 x 9.0	M14	#3	11.2	9.0
SES3-12.5 x 10.0	M16	#3	12.5	10.0
SES3-14.0 x 11.2	M20, M18	#3	14.0	11.2
SES3-16.0 x 12.5	M22	#3	16.0	12.5
SES3-18.0 x 14.0	M24	#3	18.0	14.0
SES3-20.0 x 16.0	M30, M27	#3	20.0	16.0
SES3-22.4 x 18.0	M33	#3	22.4	18.0
SES3-25.0 x 20.0	M36, M33	#3	25.0	20.0
SES3-28.0 x 22.4	M42, M39	#3	28.0	22.4



CUSTOM TOOLS
 PRESETTERS
 END MILL HOLDERS
 SHELL MILL HOLDERS
 MILLING CHUCKS
 COLLET CHUCKS
 HYDRAULIC CHUCKS
 DRILL CHUCKS
 TAP HOLDERS

TAP HOLDERS

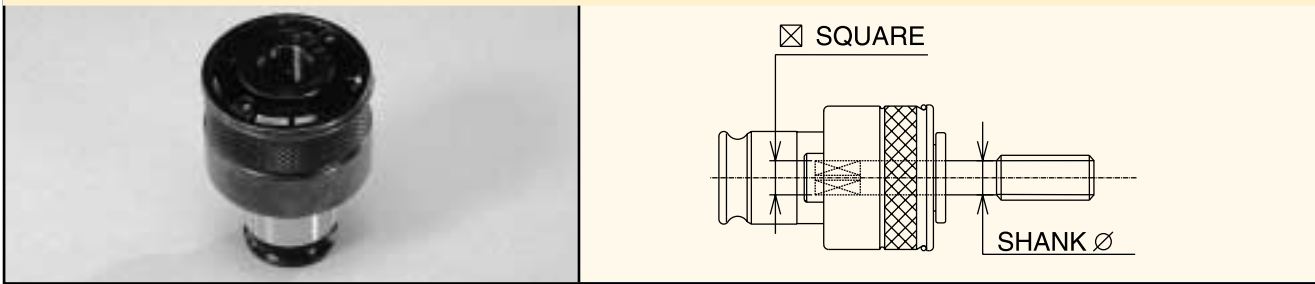
TORQUE CONTROL TAP COLLETS (STANDARD) - DIN 371/376



Part Number	Tap Size	System	Tap Shank ϕ	Drive Square \boxtimes
SES1-2.5 x 2.1	M1.4, M1.8, M3	#1	2.5	2.1
SES1-2.8 x 2.1	M2, M2.2, M2.5, M4	#1	2.8	2.1
SES1-3.5 x 2.7	M3, M5	#1	3.5	2.7
SES1-4.0 x 3.0	M3.5	#1	4.0	3.0
SES1-4.5 x 3.4	M4, M6	#1	4.5	3.4
SES1-6.0 x 4.9	M5, M6, M8	#1	6.0	4.9
SES1-7.0 x 5.5	M10	#1	7.0	5.5
SES1-8.0 x 6.2	M8, M10	#1	8.0	6.2
SES1-9.0 x 7.0	M12	#1	9.0	7.0
SES1-10.0 x 8.0	M10	#1	10.0	8.0
SES1-11.0 x 9.0	M14	#1	11.0	9.0
SES2-3.5 x 2.7	M3, M5	#2	3.5	2.7
SES2-4.0 x 3.0	M3.5	#2	4.0	3.0
SES2-4.5 x 3.4	M4, M6	#2	4.5	3.4
SES2-6.0 x 4.9	M5, M6, M8	#2	6.0	4.9
SES2-7.0 x 5.5	M10	#2	7.0	5.5
SES2-8.0 x 6.2	M8, M10	#2	8.0	6.2
SES2-9.0 x 7.0	M12	#2	9.0	7.0
SES2-10.0 x 8.0	M10	#2	10.0	8.0
SES2-11.0 x 9.0	M14	#2	11.0	9.0
SES2-12.0 x 9.0	M16	#2	12.0	9.0
SES2-14.0 x 11.0	M18	#2	14.0	11.0
SES2-16.0 x 12.0	M20	#2	16.0	12.0
SES2-18.0 x 14.5	M22, M24	#2	18.0	14.5
SES3-8.0 x 6.2	M8, M10	#2	8.0	6.2
SES3-9.0 x 7.0	M12	#3	9.0	7.0
SES3-10.0 x 8.0	M10	#3	10.0	8.0
SES3-11.0 x 9.0	M14	#3	11.0	9.0
SES3-12.0 x 9.0	M16	#3	12.0	9.0
SES3-14.0 x 11.0	M18	#3	14.0	11.0
SES3-16.0 x 12.0	M20	#3	16.0	12.0
SES3-18.0 x 14.5	M22, M24	#3	18.0	14.5
SES3-20.0 x 16.0	M27, M30	#3	20.0	16.0
SES3-22.0 x 18.0	M30	#3	22.0	18.0
SES3-25.0 x 20.0	M33, M36	#3	25.0	20.0
SES3-28.0 x 22.0	M36	#3	28.0	22.0

TAP HOLDERS

TORQUE CONTROL TAP COLLETS (STANDARD) - JIS



Part Number	Tap Size	System	Tap Shank ϕ	Drive Square \boxtimes
SES1-3.0 x 2.5	M2	#1	3.0	2.5
SES1-4.0 x 3.2	M3	#1	4.0	3.2
SES1-5.0 x 4.0	M4, M4.5	#1	5.0	4.0
SES1-5.5 x 4.5	M5, M5.5	#1	5.5	4.5
SES1-6.0 x 4.5	M6	#1	6.0	4.5
SES1-6.2 x 5.0	M7, M8	#1	6.2	5.0
SES1-7.0 x 5.5 (JIS)	M9, M10	#1	7.0	5.5
SES1-8.0 x 6.0	M11	#1	8.0	6.0
SES1-8.5 x 6.5	M12	#1	8.5	6.5
SES1-9.5 x 7.0	M13	#1	9.5	7.0
SES1-10.5 x 8.0	M14, M15	#1	10.5	8.0
SES2-6.0 x 4.5	M6	#2	6.0	4.5
SES2-6.2 x 5.0	M7, M8	#2	6.2	5.0
SES2-7.0 x 5.5 (JIS)	M9, M10	#2	7.0	5.5
SES2-8.0 x 6.0	M11	#2	8.0	6.0
SES2-8.5 x 6.5	M12	#2	8.5	6.5
SES2-9.5 x 7.0	M13	#2	9.5	7.0
SES2-10.5 x 8.0	M14, M15	#2	10.5	8.0
SES2-12.5 x 10.0	M16	#2	12.5	10.0
SES2-13.0 x 10.0	M17	#2	13.0	10.0
SES2-14.0 x 11.0 (JIS)	M18	#2	14.0	11.0
SES2-15.0 x 12.0	M20	#2	15.0	12.0
SES2-17.0 x 13.0	M22	#2	17.0	13.0
SES3-10.5 x 8.0	M14, M15	#3	10.5	8.0
SES3-12.5 x 10.0	M16	#3	12.5	10.0
SES3-13.0 x 10.0	M17	#3	13.0	10.0
SES3-14.0 x 11.0 (JIS)	M18	#3	14.0	11.0
SES3-15.0 x 12.0	M20	#3	15.0	12.0
SES3-17.0 x 13.0	M22	#3	17.0	13.0
SES3-19.0 x 15.0	M24, M25	#3	19.0	15.0
SES3-20.0 x 15.0	M26, M27	#3	20.0	15.0
SES3-21.0 x 17.0	M28	#3	21.0	17.0
SES3-23.0 x 17.0	M30	#3	23.0	17.0
SES3-24.0 x 19.0	M32	#3	24.0	19.0
SES3-25.0 x 19.0	M33	#3	25.0	19.0
SES3-26.0 x 21.0	M34, M35	#3	26.0	21.0
SES3-28.0 x 21.0	M36, M38	#3	28.0	21.0



TAP HOLDERS

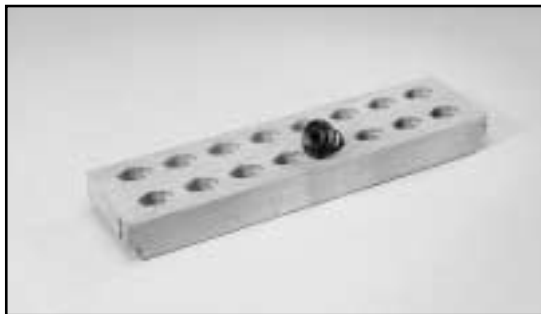
TAP COLLET REDUCERS



Part Number	Description
CRE-2/1	System# 2 Reduction Adapter to System #1
CRE-3/1	System# 3 Reduction Adapter to System #1
CRE-3/2	System# 3 Reduction Adapter to System #2

TAP COLLET RACKS

Part Number	Description
1-RACK	System #1 Tap Collet Rack, 16 Collet Capacity
2-RACK	System #2 Tap Collet Rack, 16 Collet Capacity

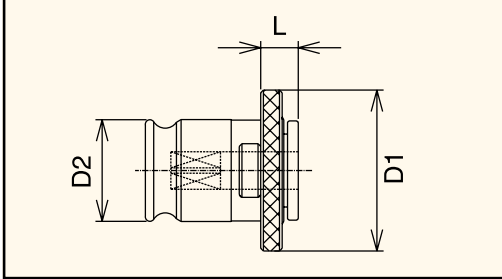


SPANNER WRENCHES

Part Number	Description
T05-SPAN	Fits System #1 Tap Collets
T10-SPAN	Fits System #2 Tap Collets
T15-SPAN	Fits System #3 Tap Collets

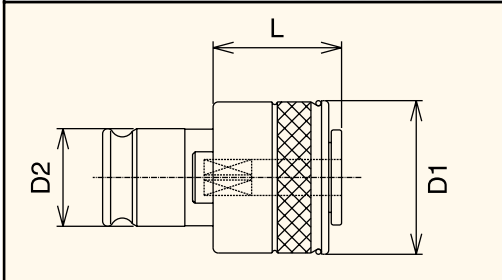


TAP HOLDERS



POSITIVE DRIVE TAP COLLETS DIMENSIONAL DATA

Type	L	D1	D2
System #1	0.27"	1.18"	0.75"
System #2	0.43"	1.89"	1.22"
System #3	0.55"	2.75"	1.89"



TORQUE CONTROL TAP COLLETS DIMENSIONAL DATA

Type	L	D1	D2
System #1	0.98"	1.28"	0.75"
System #2	1.34"	1.99"	1.22"
System #3	1.77"	2.83"	1.89"