

RiteAngleHeads™

*Deliver angled precision to standard or coolant-fed cutters.
Make your cuts up to 10,000 RPM...and tap them too.
Increase your machine's capabilities.*



Technical Characteristics



Vernier Scale



Operating Conditions



Positioning Ring

Minimize downtime

RiteAngleHeads allow you to access previously unavailable planes, thus reducing the number of work setups needed to complete your complex jobs. Reduced setups will also translate into increased precision and productivity.

Extremely rigid, highly accurate

Lyndex RiteAngleHeads are equipped with hardened and ground spiral bevel gears and collet shafts. Each unit is also fitted with high precision angular contact bearings. These components assure extreme rigidity and accuracy.

Their compact design maintains accurate spindle and tool center-line alignment while minimizing tool overhang — accuracy is maintained throughout the machining process from plane to plane.

Quick and simple setup

Lyndex provides you with a vernier scale for ease of orientation. Vernier scales help to orient the cutting tool location (0 – 360°). The positioning pin and drive keys slots can also be oriented (0 – 360°) to match your machining center's spindle and tool changer configuration, by simply adjusting the positioning ring.

Their sleek design allows them to be used in most ATCs and machine tool magazines without interference.

Versatile

Lyndex RiteAngleHeads come in a variety of different gage lengths, configurations and collet capacities to suit all of your needs for milling, drilling, and tapping.

FDC *LIGHTWEIGHT* models were specifically designed with BT30 drilling and tapping centers in mind. Their compact size and light-weight are ideal for drilling and tapping on smaller workpieces.

ER16, ER20 and ER32 allow you to perform medium duty milling, drilling and tapping while maintaining your original setup. Large capacity ER40 and ER50 models (the workhorses of the product offering) have increased rigidity to make them suitable for larger heavy duty requirements.

SLIM TYPE models maximize accessibility in tight quarters by minimizing the distance between the center line of the RiteAngleHead and the cutting tool edge.



LIGHTWEIGHT RITEANGLEHEADS™

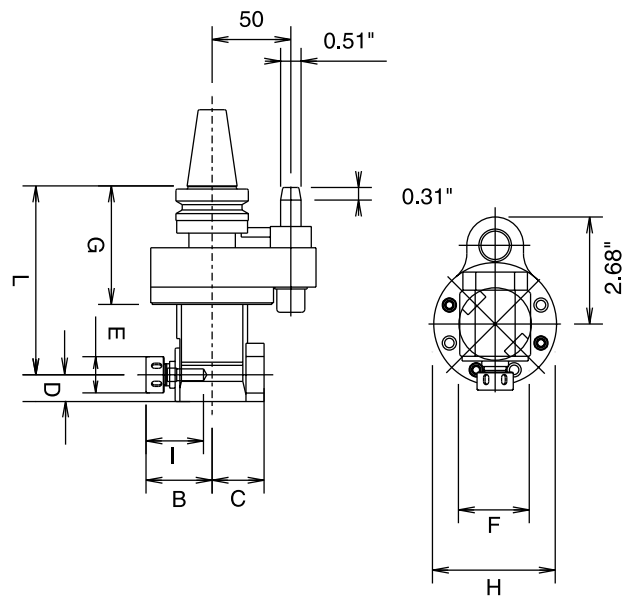
Features

- Specifically designed for BT30 Taper drilling and tapping centers.
- This unit can be rotated 360° and is compatible with most Automatic Tool Changers (ATCs).
- FDC07 Collets (0.019" to 0.275") and FDC12 Collets (0.098" to 0.472") are located on pages 140 and 142 respectively.
- A chuck nut wrench is included.
- Use with positioning block PB-4 - see page 38.

- Matches main spindle's rotation.
- Maximum speed: 8,000 RPM
- Gear ratio 1:1

B30RA-TP1-125:

- Tapping capacity - #0- 9/16" hand tap and 1/8" pipe tap
- Length compensation: 12mm
- Tap collets are located on pages 173-185.
- Weight: 4.4 lbs.

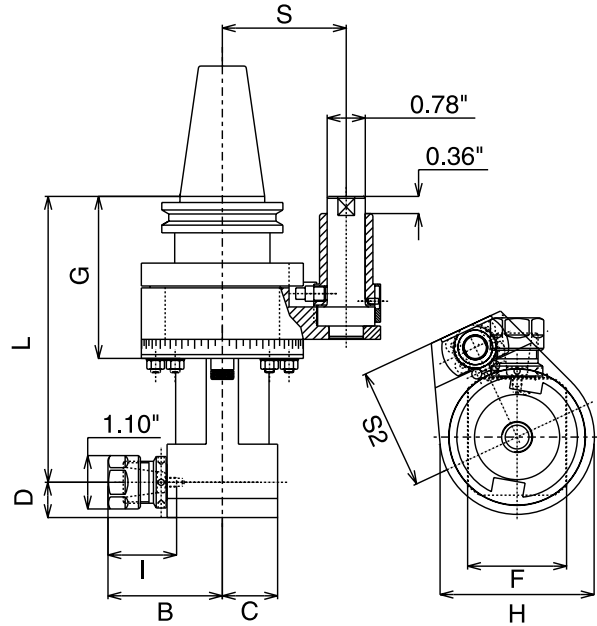


Part Number	Taper	Collet Series	L	G	D	B	C	E	F	H	I
B30RA-7000-120	BT30	FDC07	4.72"	2.96"	0.67"	1.65"	1.30"	0.91"	1.77"	3.07"	1.43"
B30RA-1200-125	BT30	FDC12	4.92"	2.96"	0.87"	2.28"	1.75"	1.26"	1.85"	3.07"	2.38"
B30RA-TP1-125	BT30	NT05	4.92"	2.96"	0.87"	2.91"	1.75"	1.42"	1.85"	3.07"	N/A

ER16 RITEANGLEHEADS™

Features

- Rigid, accurate, and powerful.
- Ideal for drilling, milling and tapping operations.
- This unit can be rotated 360° and is compatible with most Automatic Tool Changers (ATCs).
- ER16 Collets (0.019" to 0.406") are located on pages 123-124.
- Matches main spindle's rotation.
- Maximum speed: 4,000 RPM
- Gear ratio 1:1
- Maximum torque: 9ft/lbs.
- A positioning block and a chuck nut wrench are included.
- Weight: 10 lbs.
- Special orders are available upon request.

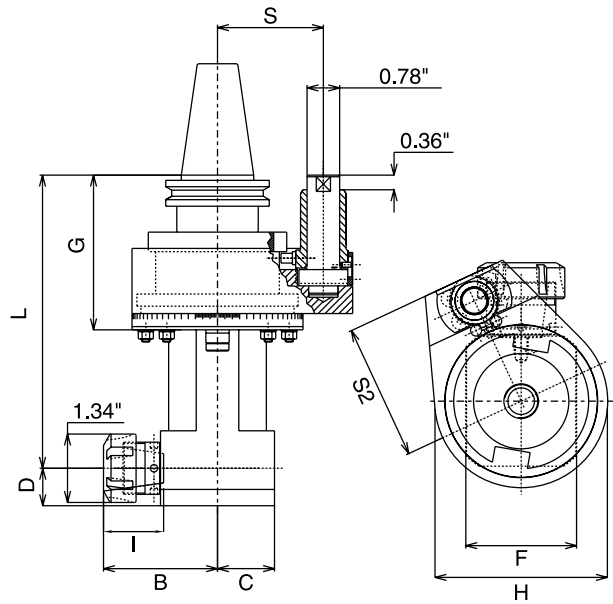


Part Number	Taper	L	G	S	S2	D	C	B	F	H	I
C40RA-ER16-150	CT40	5.91"	3.35"	65mm	3.27"	0.73"	1.14"	2.36"	1.81"	3.34"	1.41"
B40RA-ER16-158	BT40	6.22"	3.66"	65mm	3.27"	0.73"	1.14"	2.36"	1.81"	3.34"	1.41"

ER20 RITEANGLEHEADS™

Features

- Rigid, accurate, and powerful.
- Ideal for drilling, milling and tapping operations.
- This unit can be rotated 360° and is compatible with most Automatic Tool Changers (ATCs).
- ER20 Collets (0.039" to 0.511") are located on page 125.
- Maximum speed: 4,000 RPM
- Gear ratio 1:1
- Maximum torque: 11 ft/lbs.
- A positioning block and a chuck nut wrench are included.
- Weight: 40 Taper - 12 lbs.
- Weight: 50 Taper - 20 lbs.
- Special orders are available upon request.



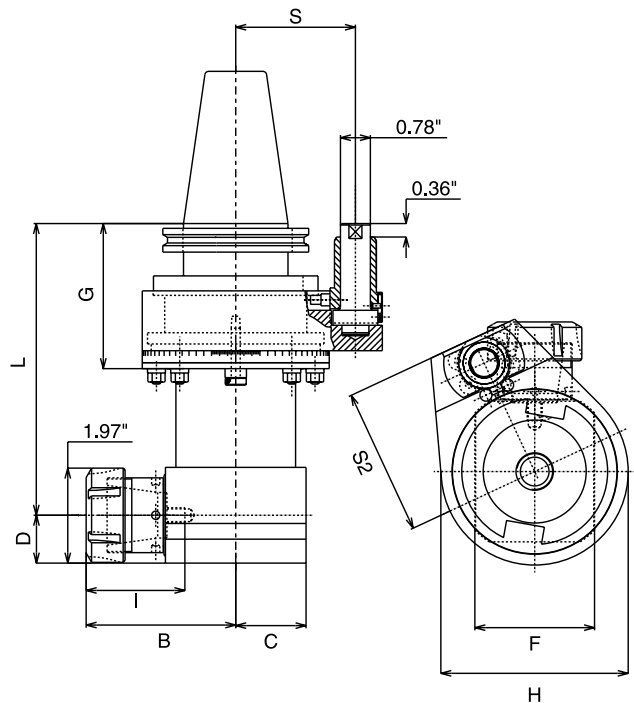
Part Number	Taper	L	G	S	S2	D	C	B	F	H	I
C40RA-ER20-180	CT40	7.09"	3.74"	65mm	3.27"	0.91"	1.38"	2.56"	2.13"	4.13"	1.41"
C50RA-ER20-180	CT50	7.09"	3.74"	80mm	3.85"	0.91"	1.38"	2.56"	2.13"	4.13"	1.41"
B40RA-ER20-188	BT40	7.40"	4.06"	65mm	3.27"	0.91"	1.38"	2.56"	2.13"	4.13"	1.41"
B50RA-ER20-190	BT50	7.40"	4.06"	80mm	3.85"	0.91"	1.38"	2.56"	2.13"	4.13"	1.41"



ER32 RITEANGLEHEADS™

Features

- Rigid, accurate, and powerful.
- Ideal for drilling, milling and tapping operations.
- This unit can be rotated 360° and is compatible with most Automatic Tool Changers (ATCs).
- ER32 Collets (0.078" to 0.787") are located on page 127.
- Matches main spindle's rotation.
- Maximum speed: 4,000 RPM
- Maximum torque: 37ft/lbs.
- Gear ratio 1:1
- A positioning block and a chuck nut wrench are included.
- Weight: 40 Taper - 20 lbs.
- Weight: 50 Taper - 28 lbs.
- Special orders are available upon request.



Part Number	Taper	L	G	S	S2	D	C	B	F	H	I
C40RA-ER32-195	CT40	7.68"	3.82"	65mm	3.27"	1.26"	1.85"	3.43"	3.15"	4.92"	1.65"
C50RA-ER32-195	CT50	7.68"	3.82"	80mm	3.85"	1.26"	1.85"	3.43"	3.15"	4.92"	1.65"
B40RA-ER32-205	BT40	8.07"	4.21"	65mm	3.27"	1.26"	1.85"	3.43"	3.15"	4.92"	1.65"
B50RA-ER32-205	BT50	8.07"	4.21"	80mm	3.85"	1.26"	1.85"	3.43"	3.15"	4.92"	1.65"

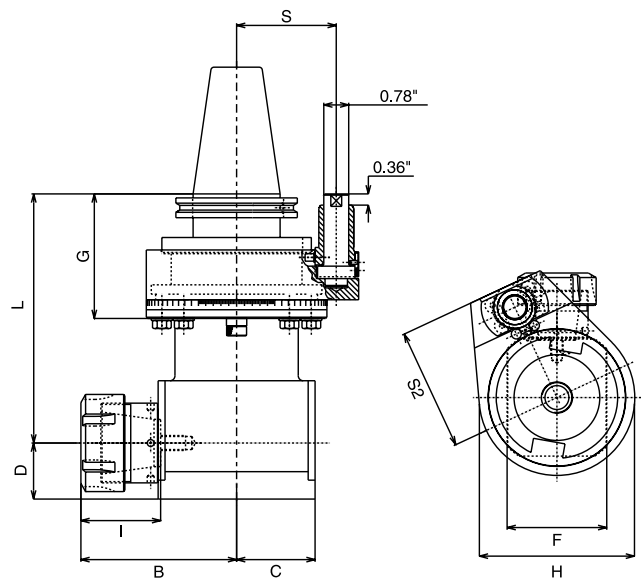


ER40/50 RITEANGLEHEADS™

Features

- Increased rigidity make these units suitable for your heavier applications.
- Ideal for drilling, milling and tapping operations.
- This unit can be rotated 360° and is compatible with most Automatic Tool Changers (ATCs).
- ER40 Collets (0.118" to 1.023") and ER50 Collets (0.433" to 1.338") are located on pages 128 and 130 respectively.

- Matches main spindle's rotation.
- Maximum speed: 4,000 RPM
- Gear ratio 1:1
- Maximum torque: 110 ft/lbs.
- A positioning block and a chuck nut wrench are included.
- Weight: 43 lbs.
- Special orders are available upon request.
- ER40 Nut Diameter: 2.48"
- ER50 Nut Diameter: 3.07"



Part Number	Taper	L	G	S	S2	D	C	B	F	H	I
C50RA-ER40-200	CT50	7.87"	3.93"	80mm	3.85"	1.77"	2.48"	4.33"	3.90"	5.71"	2.05"
C50RA-ER50-200	CT50	7.87"	3.93"	80mm	3.85"	1.77"	2.48"	4.92"	3.90"	5.71"	2.52"
B50RA-ER40-208	BT50	8.19"	3.93"	80mm	3.85"	1.77"	2.48"	4.33"	3.90"	5.71"	2.05"
B50RA-ER50-208	BT50	8.19"	4.33"	80mm	3.85"	1.77"	2.48"	4.92"	3.90"	5.71"	2.52"

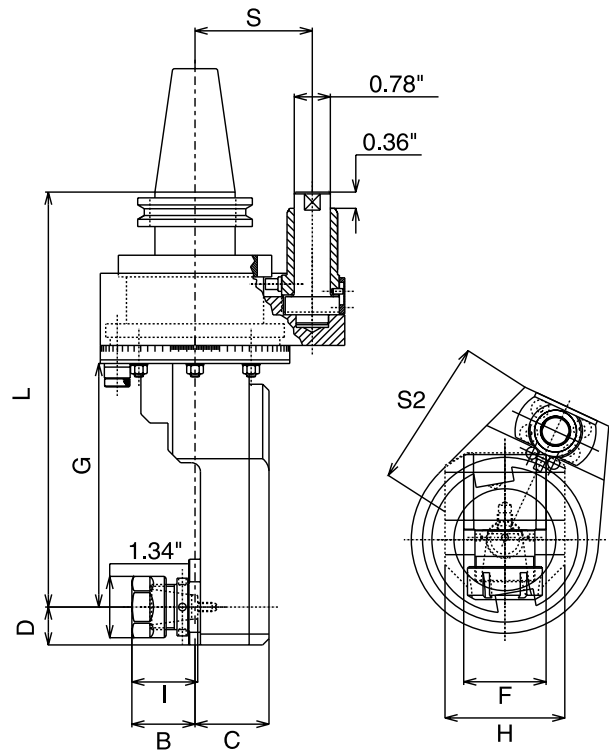


ER20 SLIM TYPE RITEANGLEHEADS™

Features

- Minimized case size is suitable for machining in tight spaces.
- Rigid, accurate, and powerful.
- Ideal for drilling and tapping operations.
- This unit can be rotated 360° and is compatible with most Automatic Tool Changers (ATCs).
- ER20 Collets (0.039" to 0.511") are located on page 125.

- Matches main spindle's rotation.
- Maximum speed: 10,000 RPM
- Gear ratio 1:1
- Maximum torque: 11 ft/lbs.
- A positioning block and a chuck nut wrench are included.
- Weight: 40 Taper - 16 lbs.
- Weight: 50 Taper - 22 lbs.
- Special orders are available upon request.

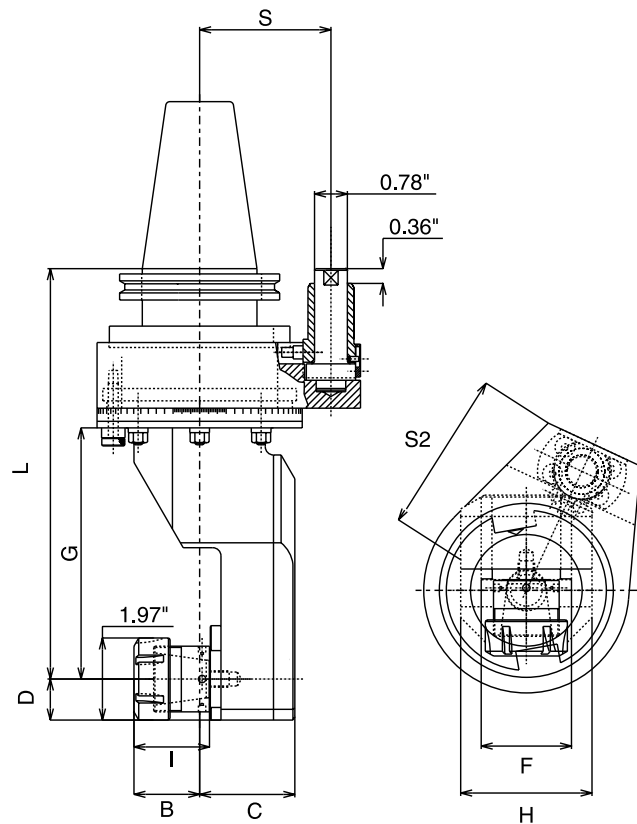


Part Number	Taper	L	G	S	S2	D	C	B	F	H	I
C40RA-ER20-230ST	CT40	9.06"	5.31"	65mm	3.27"	0.83"	1.61"	1.38"	1.77"	2.36"	1.41"
C50RA-ER20-230ST	CT50	9.06"	5.31"	80mm	3.85"	0.83"	1.61"	1.38"	1.77"	2.36"	1.41"
B40RA-ER20-238ST	BT40	9.37"	5.31"	65mm	3.27"	0.83"	1.61"	1.38"	1.77"	2.36"	1.41"
B50RA-ER20-238ST	BT50	9.37"	5.31"	80mm	3.85"	0.83"	1.61"	1.38"	1.77"	2.36"	1.41"



ER32 SLIM TYPE RITEANGLEHEADS™**Features**

- Minimized case size is suitable for machining in tight spaces.
- Rigid, accurate, and powerful.
- Ideal for drilling and tapping operations.
- This unit can be rotated 360° and is compatible with most Automatic Tool Changers (ATCs).
- ER32 Collets (0.078" to 0.787") are located on page 127.
- Matches main spindle's rotation.
- Maximum speed: 8,000 RPM
- Gear ratio 2:1
- Maximum torque: 18 ft/lbs.
- A positioning block and a chuck nut wrench are included.
- Weight: 40 Taper - 20 lbs.
- Weight: 50 Taper - 26 lbs.
- Special orders are available upon request.

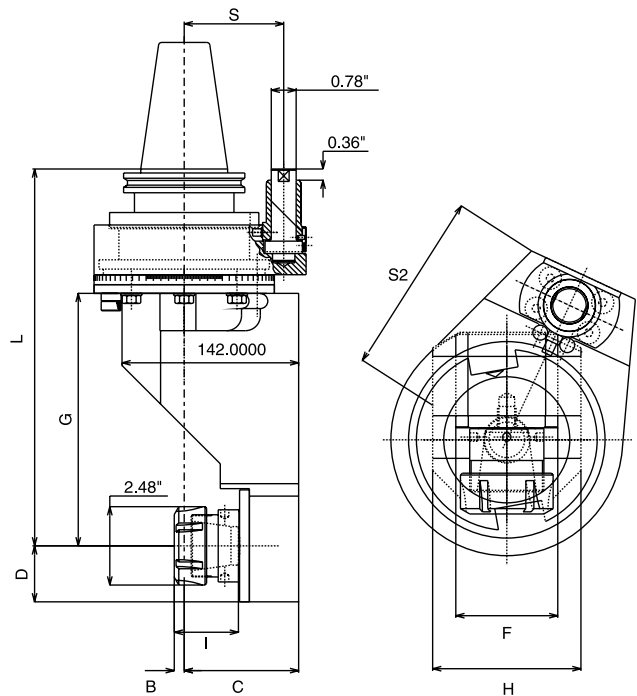


Part Number	Taper	L	G	S	S2	D	C	B	F	H	I
C40RA-ER32-250ST	CT40	9.84"	6.02"	65mm	3.27"	0.98"	2.28"	1.57"	2.17"	3.15"	1.65"
C50RA-ER32-250ST	CT50	9.84"	6.02"	80mm	3.85"	0.98"	2.28"	1.57"	2.17"	3.15"	1.65"
B40RA-ER32-258ST	BT40	10.16"	6.02"	65mm	3.27"	0.98"	2.28"	1.57"	2.17"	3.15"	1.65"
B50RA-ER32-258ST	BT50	10.16"	6.02"	80mm	3.85"	0.98"	2.28"	1.57"	2.17"	3.15"	1.65"

ER40 SLIM TYPE RITEANGLEHEADS™

Features

- Minimized case size is suitable for machining in tight spaces.
- Rigid, accurate, and powerful.
- Ideal for drilling and tapping operations.
- This unit can be rotated 360° and is compatible with most Automatic Tool Changers (ATCs).
- ER40 Collets (0.118" to 1.023") are located on pages 128-129.
- Matches main spindle's rotation.
- Maximum speed: 2,500 RPM
- Gear ratio 1:1
- Maximum torque: 110 ft/lbs.
- A positioning block and a chuck nut wrench are included.
- Weight: 37 lbs.
- Special orders are available upon request.



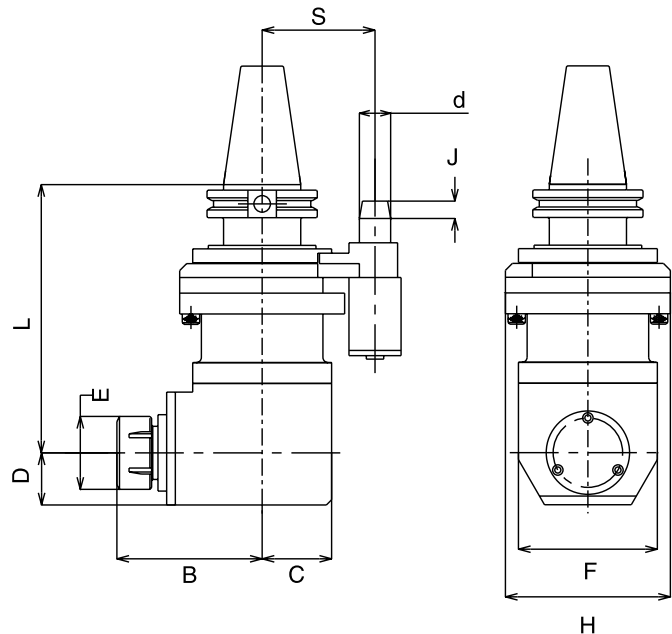
Part Number	Taper	L	G	S	S2	D	C	B	F	H	I
C50RA-ER40-303ST	CT50	11.93"	7.99"	80mm	3.85"	1.81"	3.62"	0.31"	3.54"	4.33"	2.05"
B50RA-ER40-311ST	BT50	12.24"	7.99"	80mm	3.85"	1.81"	3.62"	0.31"	3.54"	4.33"	2.05"



ER25 STANDARD RITEANGLEHEADS™

Features

- Maximum speed: 2,000 RPM
- ER25 Collets (0.039" to 0.629") are located on page 126.
- A positioning block adapter and a chuck nut wrench are included.
- The ER25 Standard RiteAngleHead permits you to realize the benefits of a RiteAngleHead at a lower cost than one of our deluxe models. Its speed and work load ratings are sufficient for most operations.
- Full 360° body rotation with positive compression locking.
- 90° incremental repositioning without indicating.
- Matches main spindle's speed and direction.
- Accommodated by most ATCs.
- Universal ring primary alignment with main spindle's drive keys.
- Weight: 15.5 lbs.



Part Number	Taper	L	S	D	C	B	F	H	E
C40RA-0025	CT40	6.08"	65mm	1.18"	1.57"	3.29"	3.15"	3.74"	1.65"
B40RA-0025	BT40	5.90"	65mm	1.18"	1.57"	3.29"	3.15"	3.74"	1.65"

