

LSK™ COLLET CHUCKS



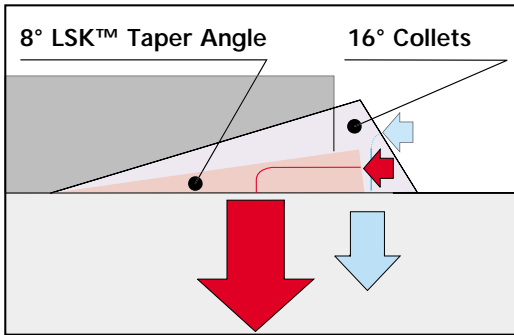
BULL'S-EYE™ CHUCK

LSK™ COLLET CHUCK

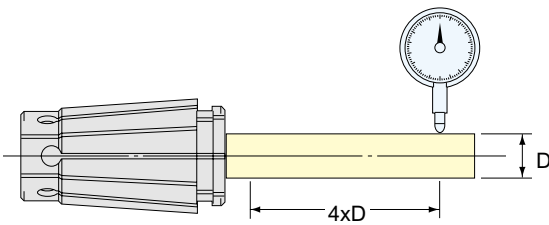
INSIDER™ COLLET CHUCK

ULTRA LOCK™ MILLING

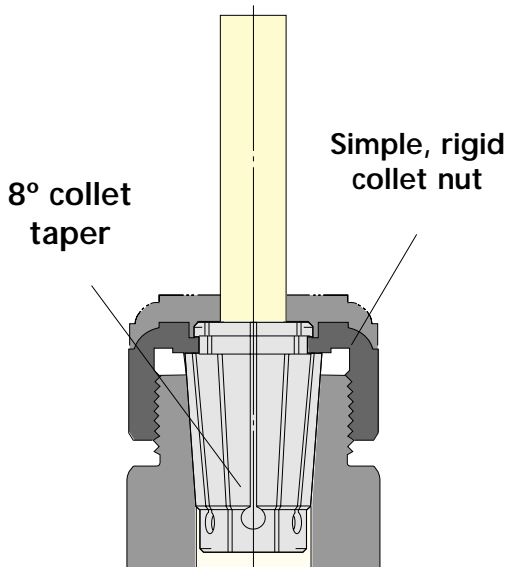




Smaller taper angle results in better concentricity and strong gripping power



Excellent run-out accuracy ($3\mu\text{m}$ at $4xD$)



Big on Precision, Narrow-Bodied

The narrow-bodied LSK™ Toolholding System accesses tight spaces and hard to reach areas with ease and drills, taps, reams, and mills with precision. Tools up to 1" in diameter can be accommodated with this superior and affordably priced collet system.

LSK™ Collet Chuck Sizes:

- LSK06: 0.7-6mm (0.027-0.236") capacity
- LSK10: 1.75-10mm (0.069-0.393") capacity
- LSK16: 2.75-16mm (0.108-0.629") capacity
- LSK25: 16.0-25.4mm (0.629-1.000") capacity

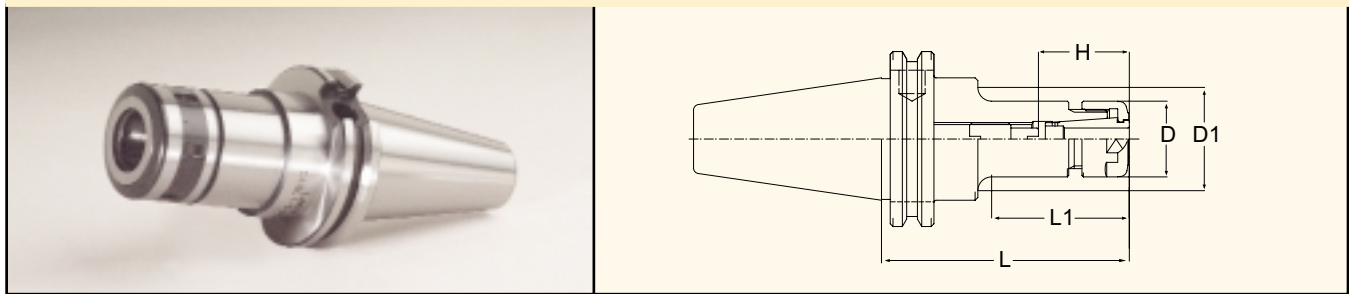
Features:

- Accuracy: run-out accuracy is less than $3\mu\text{m}$ at four times the diameter of the cutting tool shank.
- Collet nut: flat pushing on the ground shoulder of the collet ensures greater accuracy when the collet nut is tightened.
- Collet Extractor: a Collet Extractor (supplied with every LSK™ Collet Chuck, also sold separately) makes insertion and removal of the LSK™ Collet into the Collet Nut simple.
- 8° Collet Taper: provides increased gripping power, concentricity, and rigidity.

Coolant Capacity:

- Coolant-Thru the Tool: maximum 1,000 PSI when utilizing the Coolant Nut and Coolant-Thru Disk (see page 12)
- Coolant Along the Tool: maximum 1,000 PSI when utilizing the Coolant Nut and Slotted Disk (see page 12)

CT TAPER LSK™ COLLET CHUCKS



Part Number	Taper	Collet Series	L	L1	H	D	D1	Back Up Screw
C4007-LSK06	CT40	LSK06	3.543"	1.969"	0.827-1.378"	0.768"	0.768"	LSK06BUS-1
C4017-LSK06	CT40	LSK06	4.724"	2.441"	0.827-1.378"	0.768"	1.260"	LSK06BUS-1
C4027-LSK06	CT40	LSK06	5.906"	2.362"	0.827-1.378"	0.768"	0.984"	LSK06BUS-1
C4007-LSK10	CT40	LSK10	3.543"	1.969"	1.181-1.969"	1.083"	1.083"	LSK10BUS-1
C4017-LSK10	CT40	LSK10	4.724"	2.756"	1.181-1.969"	1.083"	1.260"	LSK10BUS-1
C4027-LSK10	CT40	LSK10	5.906"	2.874"	1.181-1.969"	1.083"	1.343"	LSK10BUS-1
C4007-LSK16	CT40	LSK16	3.543"	1.969"	1.772-2.756"	1.575"	1.575"	LSK16BUS-1
C4017-LSK16	CT40	LSK16	4.724"	3.150"	1.772-2.756"	1.575"	1.575"	LSK16BUS-1
C4027-LSK16	CT40	LSK16	5.906"	4.331"	1.772-2.756"	1.575"	1.575"	LSK16BUS-1
C4007-LSK25	CT40	LSK25	3.543"	2.165"	2.165-2.756"	2.165"	1.750"	LSK25BUS-1
C4017-LSK25	CT40	LSK25	4.724"	3.346"	2.165-3.346"	2.165"	1.750"	LSK25BUS-1
C5007-LSK06	CT50	LSK06	4.134"	2.362"	0.827-1.378"	0.768"	0.768"	LSK06BUS-1
C5017-LSK06	CT50	LSK06	6.496"	2.441"	0.827-1.378"	0.768"	1.260"	LSK06BUS-1
C5007-LSK10	CT50	LSK10	4.134"	2.362"	1.181-1.969"	1.083"	1.083"	LSK10BUS-1
C5017-LSK10	CT50	LSK10	6.496"	2.953"	1.181-1.969"	1.083"	1.260"	LSK10BUS-1
C5027-LSK10	CT50	LSK10	7.677"	2.953"	1.181-1.969"	1.083"	1.417"	LSK10BUS-1
C5007-LSK16	CT50	LSK16	4.134"	2.559"	1.772-2.756"	1.575"	1.575"	LSK16BUS-1
C5017-LSK16	CT50	LSK16	6.496"	3.543"	1.772-2.756"	1.575"	1.969"	LSK16BUS-1
C5027-LSK16	CT50	LSK16	7.677"	3.543"	1.772-2.756"	1.575"	1.969"	LSK16BUS-1
C5007-LSK25	CT50	LSK25	4.134"	2.559"	2.165-3.346"	2.165"	2.165"	LSK25BUS-1
C5017-LSK25	CT50	LSK25	6.496"	4.921"	2.165-3.346"	2.165"	2.165"	LSK25BUS-1
C5027-LSK25	CT50	LSK25	7.677"	6.102"	2.165-3.346"	2.165"	2.165"	LSK25BUS-1

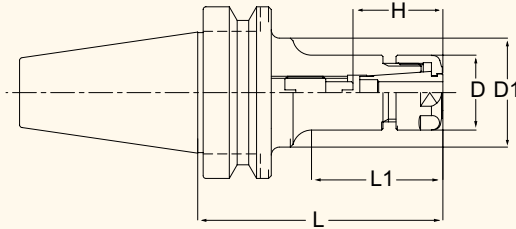
Note: Balanceable LSK™ collet chucks are available upon request.

COLLET RANGE

Collet Series	Range	Nut Tightening Torque
LSK06	0.7-6mm (0.027-0.236")	22.1 – 29.4 ft-lbs (7.3 ft-lbs for $\dot{\gamma}$ [3mm])
LSK10	1.75-10mm (0.069-0.393")	33.2 – 44.2 ft-lbs
LSK16	2.75-16mm (0.108-0.629")	55.3 – 62.6 ft-lbs
LSK25	16.0-25.4mm (0.629-1.000")	66.3 – 72.9 ft-lbs



BT TAPER LSK™ COLLET CHUCKS

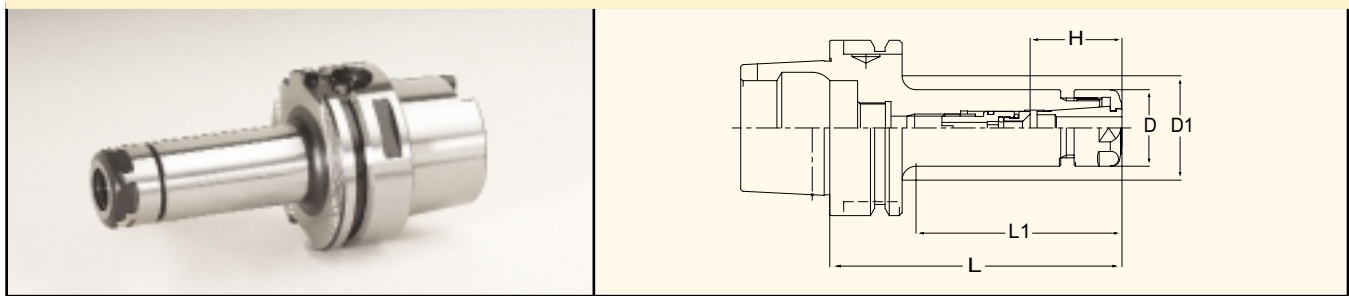


Part Number	Taper	Collet Series	L	L1	H	D	D1	Back Up Screw
B3007-LSK06	BT30	LSK06	2.362"	1.299"	0.827-1.378"	0.768"	0.768"	LSK06BUS-1
B3017-LSK06	BT30	LSK06	3.543"	2.205"	0.827-1.378"	0.768"	1.260"	LSK06BUS-1
B3007-LSK10	BT30	LSK10	1.772"	0.866"	1.181-1.969"	1.083"	1.083"	LSK10BUS-2
B3017-LSK10	BT30	LSK10	2.362"	1.378"	1.181-1.969"	1.083"	1.083"	LSK10BUS-1
B3027-LSK10	BT30	LSK10	3.543"	2.559"	1.181-1.969"	1.083"	1.083"	LSK10BUS-1
B3007-LSK16	BT30	LSK16	2.362"	1.457"	1.772-2.362"	1.575"	1.575"	LSK10BUS-1
B3017-LSK16	BT30	LSK16	3.543"	2.638"	1.772-2.559"	1.575"	1.575"	LSK16BUS-2
B3007-LSK25	BT30	LSK25	3.543"	2.559"	2.165-2.953"	2.165"	2.165"	LSK16BUS-2
B4007-LSK06	BT40	LSK06	3.543"	2.008"	0.827-1.378"	0.768"	1.260"	LSK06BUS-1
B4017-LSK06	BT40	LSK06	4.724"	2.362"	0.827-1.378"	0.768"	1.260"	LSK06BUS-1
B4027-LSK06	BT40	LSK06	5.906"	2.362"	0.827-1.378"	0.768"	0.984"	LSK06BUS-1
B4007-LSK10	BT40	LSK10	3.543"	1.890"	1.181-1.969"	1.083"	1.575"	LSK10BUS-1
B4017-LSK10	BT40	LSK10	4.724"	2.874"	1.181-1.969"	1.083"	1.575"	LSK10BUS-1
B4027-LSK10	BT40	LSK10	5.906"	2.874"	1.181-1.969"	1.083"	1.358"	LSK10BUS-1
B4007-LSK16	BT40	LSK16	3.543"	2.283"	1.772-2.756"	1.575"	1.575"	LSK16BUS-1
B4017-LSK16	BT40	LSK16	4.724"	3.465"	1.772-2.756"	1.575"	1.575"	LSK16BUS-1
B4027-LSK16	BT40	LSK16	5.906"	4.646"	1.772-2.756"	1.575"	1.575"	LSK16BUS-1
B4007-LSK25	BT40	LSK25	2.953"	1.850"	2.165-2.953"	2.165"	2.165"	LSK16BUS-2
B4017-LSK25	BT40	LSK25	3.543"	2.402"	2.165-2.953"	2.165"	2.165"	LSK25BUS-1
B4027-LSK25	BT40	LSK25	4.724"	3.583"	2.165-3.346"	2.165"	2.165"	LSK25BUS-1
B5007-LSK06	BT50	LSK06	4.134"	2.165"	0.827-1.378"	0.768"	1.260"	LSK06BUS-1
B5017-LSK06	BT50	LSK06	6.496"	2.362"	0.827-1.378"	0.768"	1.260"	LSK06BUS-1
B5027-LSK06	BT50	LSK06	7.677"	2.362"	0.827-1.378"	0.768"	1.181"	LSK06BUS-1
B5007-LSK10	BT50	LSK10	4.134"	2.244"	1.181-1.969"	1.083"	1.083"	LSK10BUS-1
B5017-LSK10	BT50	LSK10	6.496"	2.953"	1.181-1.969"	1.083"	1.260"	LSK10BUS-1
B5027-LSK10	BT50	LSK10	7.677"	2.953"	1.181-1.969"	1.083"	1.417"	LSK10BUS-1
B5007-LSK16	BT50	LSK16	4.134"	2.441"	1.772-2.756"	1.575"	1.575"	LSK16BUS-1
B5017-LSK16	BT50	LSK16	6.496"	3.543"	1.772-2.756"	1.575"	1.969"	LSK16BUS-1
B5027-LSK16	BT50	LSK16	7.677"	3.543"	1.772-2.756"	1.575"	2.047"	LSK16BUS-1
B5007-LSK25	BT50	LSK25	4.134"	2.441"	2.165-3.346"	2.165"	2.165"	LSK25BUS-1
B5017-LSK25	BT50	LSK25	6.496"	4.803"	2.165-3.346"	2.165"	2.165"	LSK25BUS-1
B5027-LSK25	BT50	LSK25	7.677"	5.984"	2.165-3.346"	2.165"	2.165"	LSK25BUS-1

Note: Balanceable LSK™ collet chucks are available upon request.



HSK TAPER LSK™ COLLET CHUCKS



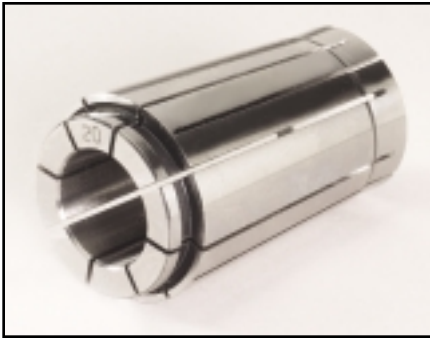
Part Number	Taper	Collet Series	L	L1	H	D	D1	Back Up Screw
HSK63A-LSK06-100	HSK63A	LSK06	3.937"	2.441"	1.024-1.220"	0.768"	1.260"	LSK06BUS-1(C)
HSK63A-LSK06-120	HSK63A	LSK06	4.724"	2.441"	1.024-1.220"	0.768"	1.260"	LSK06BUS-1(C)
HSK63A-LSK06-150	HSK63A	LSK06	5.906"	2.362"	1.024-1.220"	0.768"	0.984"	LSK06BUS-1(C)
HSK63A-LSK10-105	HSK63A	LSK10	4.134"	2.913"	1.378-1.614"	1.083"	1.083"	LSK10BUS-1(C)
HSK63A-LSK10-120	HSK63A	LSK10	4.724"	2.362"	1.378-1.614"	1.083"	1.260"	LSK10BUS-1(C)
HSK63A-LSK10-150	HSK63A	LSK10	5.906"	2.874"	1.378-1.614"	1.083"	1.358"	LSK10BUS-1(C)
HSK63A-LSK16-120	HSK63A	LSK16	4.724"	3.583"	1.772-2.047"	1.575"	1.575"	LSK16BUS-1(C)
HSK63A-LSK16-150	HSK63A	LSK16	5.906"	4.764"	1.772-2.244"	1.575"	1.575"	LSK16BUS-2(C)
HSK63A-LSK25-135	HSK63A	LSK25	5.315"	4.252"	2.362-2.559"	2.165"	2.165"	LSK25BUS-1(C)
HSK100A-LSK06-105	HSK100A	LSK06	4.134"	2.441"	1.024-1.220"	0.768"	1.575"	LSK06BUS-1(C)
HSK100A-LSK10-105	HSK100A	LSK10	4.134"	2.244"	1.378-1.614"	1.083"	1.575"	LSK10BUS-1(C)
HSK100A-LSK10-120	HSK100A	LSK10	4.724"	2.913"	1.378-1.614"	1.083"	1.575"	LSK10BUS-1(C)
HSK100A-LSK10-150	HSK100A	LSK10	5.906"	3.150"	1.378-1.614"	1.083"	1.575"	LSK10BUS-1(C)
HSK100A-LSK10-200	HSK100A	LSK10	7.874"	2.953"	1.378-1.614"	1.083"	1.535"	LSK10BUS-1(C)
HSK100A-LSK16-120	HSK100A	LSK16	4.724"	3.386"	1.654-2.047"	1.575"	1.575"	LSK16BUS-1(C)
HSK100A-LSK16-150	HSK100A	LSK16	5.906"	3.543"	1.654-2.244"	1.575"	1.969"	LSK16BUS-2(C)
HSK100A-LSK16-200	HSK100A	LSK16	7.874"	3.543"	1.654-2.244"	1.575"	2.165"	LSK16BUS-2(C)
HSK100A-LSK25-145	HSK100A	LSK25	5.709"	4.370"	2.362-2.559"	2.165"	2.165"	LSK25BUS-1(C)

Note: Balanceable LSK™ collet chucks are available upon request.

COLLET RANGE

Collet Series	Range	Nut Tightening Torque
LSK06	0.7-6mm (0.027-0.236")	22.1 – 29.4 ft-lbs (7.3 ft-lbs for γ [3mm])
LSK10	1.75-10mm (0.069-0.393")	33.2 – 44.2 ft-lbs
LSK16	2.75-16mm (0.108-0.629")	55.3 – 62.6 ft-lbs
LSK25	16.0-25.4mm (0.629-1.000")	66.3 – 72.9 ft-lbs





LSK™ Collet

LSK™ Collets offer both high accuracy (TIR of less than 3µm at four times the diameter of the cutting tool shank) and strong gripping power (due to the 8° Collet Taper). LSK™ Collets are recommended for use with cylindrical shank cutting tools. LSK™ Collets can be used for standard or coolant-thru applications (when paired with the items below).



Coolant Nut

The LSK™ Coolant Nut can be paired either with a Coolant-Thru Disk or a Slotted Disk (Disks sold separately) for coolant applications. Coolant Nuts are available for all four LSK™ Collet Series (see page 14 for sizes and part numbers). When using the Coolant Nut, add 6mm (0.236") to the toolholder gage length.



Coolant-Thru Disk

When the Coolant Nut is paired with the Coolant-Thru Disk, a perfect seal is formed around the cutting tool shank, making this combination ideal for coolant-thru tools. Coolant-Thru Disks must be ordered on size for the cutting tool (see page 14 for sizes and part numbers). Assembly of the Coolant Nut and Disk is easily accomplished with the Disk Wrench (sold separately).



Slotted Disk

When the Coolant Nut is paired with the Slotted Disk, coolant is directed to the cutting edge of the cutting tool, making this combination ideal for non-coolant-thru tools. Slotted Disks must be ordered on size for the cutting tool (see page 14 for sizes and part numbers). Assembly of the Coolant Nut and Disk is easily accomplished with the Disk Wrench (sold separately).

LSK06 COLLETS

Part Number	Size mm	Size inch
LSK06-031	0.7-0.8mm	0.027-0.031"
LSK06-039	0.9-1.0mm	0.035-0.039"
LSK06-049	1.15-1.25mm	0.045-0.049"
LSK06-059	1.3-1.5mm	0.051-0.059"
LSK06-068	1.5-1.75mm	0.059-0.068"
LSK06-078	1.8-2.0mm	0.070-0.078"
LSK06-088	2.05-2.25mm	0.080-0.088"
LSK06-098	2.3-2.5mm	0.090-0.098"
LSK06-108	2.55-2.75mm	0.100-0.108"
LSK06-118	2.8-3.0mm	0.110-0.118"
LSK06-137	3.0-3.5mm	0.118-0.137"
LSK06-157	3.5-4.0mm	0.137-0.157"
LSK06-177	4.0-4.5mm	0.157-0.177"
LSK06-196	4.5-5.0mm	0.177-0.196"
LSK06-216	5.0-5.5mm	0.196-0.216"
LSK06-236	5.5-6.0mm	0.216-0.236"

LSK16 COLLETS

Part Number	Size mm	Size inch
LSK16-118	2.75-3.0mm	0.108-0.118"
LSK16-137	3.0-3.5mm	0.118-0.137"
LSK16-157	3.5-4.0mm	0.137-0.157"
LSK16-177	4.0-4.5mm	0.157-0.177"
LSK16-196	4.5-5.0mm	0.177-0.196"
LSK16-216	5.0-5.5mm	0.196-0.216"
LSK16-236	5.5-6.0mm	0.216-0.236"
LSK16-255	6.0-6.5mm	0.236-0.255"
LSK16-275	6.5-7.0mm	0.255-0.275"
LSK16-295	7.0-7.5mm	0.275-0.295"
LSK16-314	7.5-8.0mm	0.295-0.314"
LSK16-334	8.0-8.5mm	0.314-0.334"
LSK16-354	8.5-9.0mm	0.334-0.354"
LSK16-374	9.0-9.5mm	0.354-0.374"
LSK16-393	9.5-10.0mm	0.374-0.393"
LSK16-413	10.0-10.5mm	0.393-0.413"
LSK16-433	10.5-11.0mm	0.413-0.433"
LSK16-452	11.0-11.5mm	0.433-0.452"
LSK16-472	11.5-12.0mm	0.452-0.472"
LSK16-492	12.0-12.5mm	0.472-0.492"
LSK16-511	12.5-13.0mm	0.492-0.511"
LSK16-531	13.0-13.5mm	0.511-0.531"
LSK16-551	13.5-14.0mm	0.531-0.551"
LSK16-570	14.0-14.5mm	0.551-0.570"
LSK16-590	14.5-15.0mm	0.570-0.590"
LSK16-610	15.0-15.5mm	0.590-0.610"
LSK16-629	15.5-16.0mm	0.610-0.629"

LSK10 COLLETS

Part Number	Size mm	Size inch
LSK10-078	1.75-2.0mm	0.068-0.078"
LSK10-088	2.0-2.25mm	0.078-0.088"
LSK10-098	2.25-2.5mm	0.088-0.098"
LSK10-108	2.5-2.75mm	0.098-0.108"
LSK10-118	2.75-3.0mm	0.108-0.118"
LSK10-137	3.0-3.5mm	0.118-0.137"
LSK10-157	3.5-4.0mm	0.137-0.157"
LSK10-177	4.0-4.5mm	0.157-0.177"
LSK10-196	4.5-5.0mm	0.177-0.196"
LSK10-216	5.0-5.5mm	0.196-0.216"
LSK10-236	5.5-6.0mm	0.216-0.236"
LSK10-255	6.0-6.5mm	0.236-0.255"
LSK10-275	6.5-7.0mm	0.255-0.275"
LSK10-295	7.0-7.5mm	0.275-0.295"
LSK10-314	7.5-8.0mm	0.295-0.314"
LSK10-334	8.0-8.5mm	0.314-0.334"
LSK10-354	8.5-9.0mm	0.334-0.354"
LSK10-374	9.0-9.5mm	0.354-0.374"
LSK10-393	9.5-10.0mm	0.374-0.393"

LSK25 COLLETS

Part Number	Size mm	Size inch
LSK25-649	16.0-16.5mm	0.629-0.649"
LSK25-669	16.5-17.0mm	0.649-0.669"
LSK25-688	17.0-17.5mm	0.669-0.688"
LSK25-708	17.5-18.0mm	0.688-0.708"
LSK25-728	18.0-18.5mm	0.708-0.728"
LSK25-748	18.5-19.0mm	0.728-0.748"
LSK25-767	19.0-19.5mm	0.748-0.767"
LSK25-787	19.5-20.0mm	0.767-0.787"
LSK25-807	20.0-20.5mm	0.787-0.807"
LSK25-826	20.5-21.0mm	0.807-0.826"
LSK25-846	21.0-21.5mm	0.826-0.846"
LSK25-866	21.5-22.0mm	0.846-0.866"
LSK25-885	22.0-22.5mm	0.866-0.885"
LSK25-905	22.5-23.0mm	0.885-0.905"
LSK25-925	23.0-23.5mm	0.905-0.925"
LSK25-944	23.5-24.0mm	0.925-0.944"
LSK25-964	24.0-24.5mm	0.944-0.964"
LSK25-984	24.5-25.0mm	0.964-0.984"
LSK25-1000	25.0-25.4mm	0.984-0.1000"



LSK™ COOLANT COLLET SYSTEM

Collet Chuck	Coolant Nut	Cutting Tool Size	Coolant-Thru Disk	Slotted Disk	Disk Wrench
LSK06	LSK06-NUT(C)	3mm	LSK06D-3(C)	LSK06D-3(S)	LSK06-DW
		4mm	LSK06D-4(C)	LSK06D-4(S)	
		5mm	LSK06D-5(C)	LSK06D-5(S)	
		6mm	LSK06D-6(C)	LSK06D-6(S)	
		1/8"	LSK06D-008(C)	LSK06D-008(S)	
		3/16"	LSK06D-012(C)	LSK06D-012(S)	
LSK10	LSK10-NUT(C)	3mm	LSK10D-3(C)	LSK10D-3(S)	LSK10-DW
		4mm	LSK10D-4(C)	LSK10D-4(S)	
		5mm	LSK10D-5(C)	LSK10D-5(S)	
		6mm	LSK10D-6(C)	LSK10D-6(S)	
		8mm	LSK10D-8(C)	LSK10D-8(S)	
		10mm	LSK10D-10(C)	LSK10D-10(S)	
		1/8"	LSK10D-008(C)	LSK10D-008(S)	
		3/16"	LSK10D-012(C)	LSK10D-012(S)	
		1/4"	LSK10D-016(C)	LSK10D-016(S)	
		5/16" 3/8"	LSK10D-020(C) LSK10D-024(C)	LSK10D-020(S) LSK10D-024(S)	
LSK16	LSK16-NUT(C)	6mm	LSK16D-6(C)	LSK16D-6(S)	LSK16-DW
		8mm	LSK16D-8(C)	LSK16D-8(S)	
		10mm	LSK16D-10(C)	LSK16D-10(S)	
		12mm	LSK16D-12(C)	LSK16D-12(S)	
		16mm	LSK16D-16(C)	LSK16D-16(S)	
		1/4"	LSK16D-016(C)	LSK16D-016(S)	
		5/16"	LSK16D-020(C)	LSK16D-020(S)	
		3/8"	LSK16D-024(C)	LSK16D-024(S)	
		7/16"	LSK16D-028(C)	LSK16D-028(S)	
		1/2" 9/16" 5/8"	LSK16D-032(C) LSK16D-036(C) LSK16D-040(C)	LSK16D-032(S) LSK16D-036(S) LSK16D-040(S)	
LSK25	LSK25-NUT(C)	16mm	LSK25D-16(C)	LSK25D-16(S)	LSK25-DW
		20mm	LSK25D-20(C)	LSK25D-20(S)	
		25mm	LSK25D-25(C)	LSK25D-25(S)	
		5/8"	LSK25D-040(C)	LSK25D-040(S)	
		11/16"	LSK25D-044(C)	LSK25D-044(S)	
		3/4"	LSK25D-048(C)	LSK25D-048(S)	
		13/16"	LSK25D-052(C)	LSK25D-052(S)	
		7/8"	LSK25D-056(C)	LSK25D-056(S)	
		15/16"	LSK25D-060(C)	LSK25D-060(S)	
		1"	LSK25D-064(C)	LSK25D-064(S)	



COLLET EXTRACTOR

Part Number	Description
LSKR-06	LSK06 Collet Extractor
LSKR-10	LSK10 Collet Extractor
LSKR-16	LSK16 Collet Extractor
LSKR-25	LSK25 Collet Extractor



REPLACEMENT LSK™ CHUCK NUTS

Part Number	Description
LSK06-NUT	LSK06 Chuck Nut
LSK10-NUT	LSK10 Chuck Nut
LSK16-NUT	LSK16 Chuck Nut
LSK25-NUT	LSK25 Chuck Nut



LSK™ CHUCK NUT WRENCHES

Part Number	Description
LSK06-SPAN	LSK06 Chuck Nut Wrench
LSK10-SPAN	LSK10 Chuck Nut Wrench
LSK16-SPAN	LSK16 Chuck Nut Wrench
LSK25-SPAN	LSK25 Chuck Nut Wrench



BACK UP SCREWS

Part Number	Description
LSK06BUS-1	LSK Back Up Screw
LSK10BUS-1	LSK Back Up Screw
LSK10BUS-2	LSK Back Up Screw
LSK16BUS-1	LSK Back Up Screw
LSK16BUS-2	LSK Back Up Screw
LSK25BUS-1	LSK Back Up Screw
LSK06BUS-1(C)	LSK Back Up Screw
LSK10BUS-1(C)	LSK Back Up Screw
LSK16BUS-1(C)	LSK Back Up Screw
LSK16BUS-2(C)	LSK Back Up Screw
LSK25BUS-1(C)	LSK Back Up Screw



BULL'S-EYE™ CHUCK

LSK™ COLLET CHUCK

INSIDER™ COLLET CHUCK

ULTRA LOCK™ MILLING