

# HSK TOOLING



STUB, BORING, BLANK

RETENTION STUDS

HSK TOOLING

BALANCEABLE TOOLHOLDERS

SHRINK FIT TOOLHOLDERS

ACCESSORIES

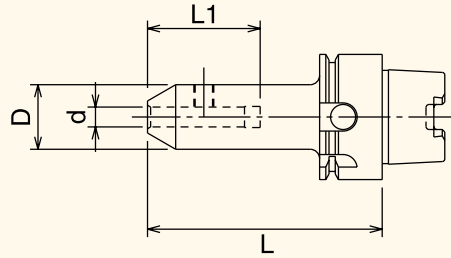
R8/5C/3J/16C

TECHNICAL SECTION

INDEX



### HSK40A END MILL HOLDERS



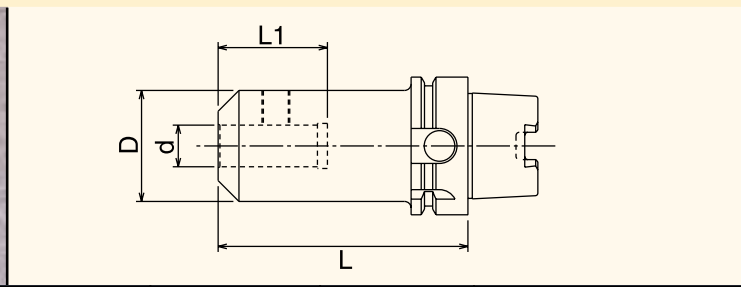
Part Number	Taper	d	L	L1	D	Set Screw
HSK40A-0125-75	HSK40A	1/8"	2.95"	1.25"	.750"	6-32X1/4
HSK40A-0187-75	HSK40A	3/16"	2.95"	1.25"	.750"	8-32X1/4
HSK40A-0250-75	HSK40A	1/4"	2.95"	1.42"	.812"	1/4-28X1/4
HSK40A-0312-75	HSK40A	5/16"	2.95"	1.42"	1.00"	5/16-24X1/4
HSK40A-0375-75	HSK40A	3/8"	2.95"	1.57"	1.00"	3/8-24X5/16
HSK40A-0437-75	HSK40A	7/16"	2.95"	1.77"	1.38"	3/8-24X5/16
HSK40A-0500-75	HSK40A	1/2"	2.95"	1.77"	1.38"	7/16-20X3/8
HSK40A-0625-75	HSK40A	5/8"	2.95"	1.89"	1.63"	9/16-18X1/2
HSK40A-0750-75	HSK40A	3/4"	2.95"	1.97"	1.75"	5/8-18X1/2

Note: Each toolholder comes equipped with a coolant tube.

HSK TOOLING  
 RETENTION STUDS  
 STUB, BORING, BLANK  
 BALANCEABLE TOOLHOLDERS  
 SHRINK FIT TOOLHOLDERS  
 ACCESSORIES  
 R8/5C/3J/16C  
 TECHNICAL SECTION  
 INDEX



### HSK63A END MILL HOLDERS



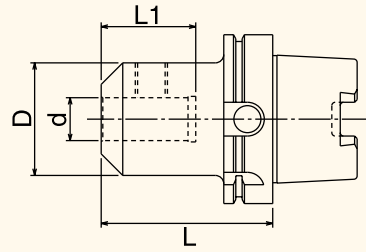
Part Number	Taper	d	L	L1	D	Set Screw
HSK63A-0187-3.00	HSK63A	3/16"	3.00"	1.10"	.867"	8-32X1/4
HSK63A-0187-5.00	HSK63A	3/16"	5.00"	1.10"	.867"	8-32X1/4
HSK63A-0250-3.00	HSK63A	1/4"	3.00"	1.42"	.985"	1/4-28X1/4
HSK63A-0250-5.00	HSK63A	1/4"	5.00"	1.42"	.985"	1/4-28X1/4
HSK63A-0312-3.00	HSK63A	5/16"	3.00"	1.42"	1.00"	5/16-24X1/4
HSK63A-0312-5.00	HSK63A	5/16"	5.00"	1.42"	1.00"	5/16-24X1/4
HSK63A-0375-3.50	HSK63A	3/8"	3.50"	1.57"	1.38"	3/8-24X5/16
HSK63A-0375-5.00	HSK63A	3/8"	5.00"	1.57"	1.38"	3/8-24X5/16
HSK63A-0437-4.00	HSK63A	7/16"	4.00"	1.77"	1.65"	3/8-24X5/16
HSK63A-0437-5.00	HSK63A	7/16"	5.00"	1.77"	1.65"	3/8-24X5/16
HSK63A-0500-4.00	HSK63A	1/2"	4.00"	1.77"	1.63"	3/8-24X5/16
HSK63A-0500-5.00	HSK63A	1/2"	5.00"	1.77"	1.63"	3/8-24X5/16
HSK63A-0625-4.00	HSK63A	5/8"	4.00"	1.89"	1.81"	1/2-20X5/16
HSK63A-0625-5.00	HSK63A	5/8"	5.00"	1.89"	1.81"	1/2-20X5/16
HSK63A-0750-4.50	HSK63A	3/4"	4.50"	1.97"	2.00"	1/2-20X5/16
HSK63A-0750-6.00	HSK63A	3/4"	6.00"	1.97"	2.00"	1/2-20X5/16
HSK63A-1000-4.50	HSK63A	1"	4.50"	2.20"	2.63"	3/4-16X11/16 (2)
HSK63A-1000-6.00	HSK63A	1"	6.00"	2.20"	2.63"	3/4-16X11/16 (2)
HSK63A-1250-4.50	HSK63A	1-1/4"	4.50"	2.36"	2.88"	3/4-16X11/16 (2)
HSK63A-1250-6.00	HSK63A	1-1/4"	6.00"	2.36"	2.88"	3/4-16X11/16 (2)

Note: End Mill Holders come equipped with set screws.  
 For Balanceable HSK63A End Mill Holders, see page 215.



RETENTION STUDS    STUB, BORING, BLANK    HSK TOOLING    BALANCEABLE TOOLHOLDERS    SHRINK FIT TOOLHOLDERS    ACCESSORIES    R8/5C/3J/16C    TECHNICAL SECTION    INDEX


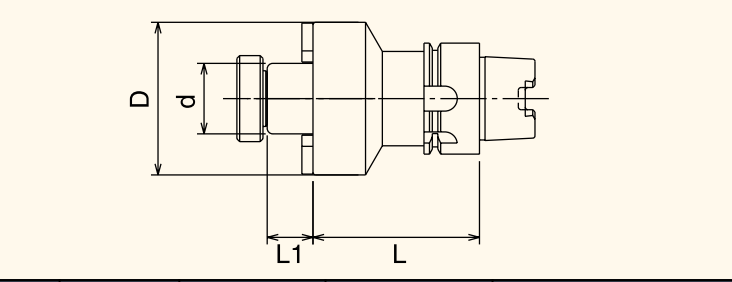
### HSK100A END MILL HOLDERS




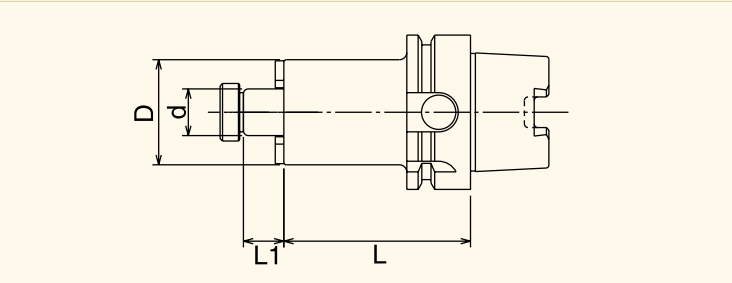
Part Number	Taper	d	L	L1	D	Set Screw
HSK100A-0187-4.00	HSK100A	3/16"	4.00"	1.10"	.867"	8-32X1/4
HSK100A-0187-6.00	HSK100A	3/16"	6.00"	1.10"	.867"	8-32X1/4
HSK100A-0250-4.00	HSK100A	1/4"	4.00"	1.42"	.985"	1/4-28X1/4
HSK100A-0250-6.00	HSK100A	1/4"	6.00"	1.42"	.985"	1/4-28X1/4
HSK100A-0312-4.00	HSK100A	5/16"	4.00"	1.42"	1.00"	5/16-24X1/4
HSK100A-0312-6.00	HSK100A	5/16"	6.00"	1.42"	1.00"	5/16-24X1/4
HSK100A-0375-4.00	HSK100A	3/8"	4.00"	1.57"	1.38"	3/8-24X5/16
HSK100A-0375-6.00	HSK100A	3/8"	6.00"	1.57"	1.38"	3/8-24X5/16
HSK100A-0437-4.00	HSK100A	7/16"	4.00"	1.77"	1.65"	3/8-24X5/16
HSK100A-0437-6.00	HSK100A	7/16"	6.00"	1.77"	1.65"	3/8-24X5/16
HSK100A-0500-4.00	HSK100A	1/2"	4.00"	1.77"	1.63"	3/8-24X5/16
HSK100A-0500-6.00	HSK100A	1/2"	6.00"	1.77"	1.63"	3/8-24X5/16
HSK100A-0625-4.00	HSK100A	5/8"	4.00"	1.89"	1.81"	1/2-20X5/16
HSK100A-0625-6.00	HSK100A	5/8"	6.00"	1.89"	1.81"	1/2-20X5/16
HSK100A-0750-4.00	HSK100A	3/4"	4.00"	1.97"	2.00"	1/2-20X5/16
HSK100A-0750-6.00	HSK100A	3/4"	6.00"	1.97"	2.00"	1/2-20X5/16
HSK100A-1000-4.00	HSK100A	1"	4.00"	2.20"	2.63"	3/4-16X11/16 (2)
HSK100A-1000-6.00	HSK100A	1"	6.00"	2.20"	2.63"	3/4-16X11/16 (2)
HSK100A-1250-4.00	HSK100A	1-1/4"	4.00"	2.36"	2.88"	3/4-16X11/16 (2)
HSK100A-1250-6.00	HSK100A	1-1/4"	6.00"	2.36"	2.88"	3/4-16X11/16 (2)

Note: Each toolholder comes equipped with a coolant tube.  
 End Mill Holders come equipped with set screws.  
 For Balanceable HSK100A End Mill Holders, see page 216.

### HSK40A SHELL MILL HOLDERS

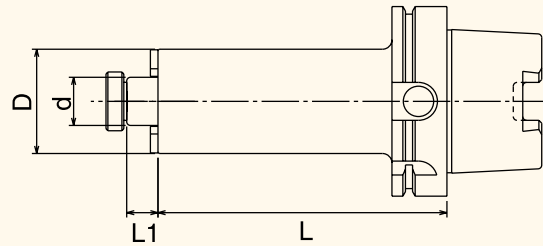
							
Part Number	Taper	d	L	D	L1	Key Size	Arbor Thread
HSK40A-SM0750-60	HSK40A	3/4"	2.36"	1.69"	0.65"	5/16"	3/8" -24
HSK40A-SM1000-60	HSK40A	1"	2.36"	2.17"	0.65"	3/8"	1/2" -20

### HSK63A SHELL MILL HOLDERS

							
Part Number	Taper	d	L	D	L1	Key Size	Arbor Thread
HSK63A-SM0750-3.00	HSK63A	3/4"	3.00"	1.69"	0.65"	5/16"	3/8" -24
HSK63A-SM0750-5.00	HSK63A	3/4"	5.00"	1.69"	0.65"	5/16"	3/8" -24
HSK63A-SM1000-3.00	HSK63A	1"	3.00"	2.16"	0.65"	3/8"	1/2" -20
HSK63A-SM1000-5.00	HSK63A	1"	5.00"	2.16"	0.65"	3/8"	1/2" -20
HSK63A-SM1250-3.00	HSK63A	1-1/4"	3.00"	2.76"	0.65"	1/2"	5/8" -18
HSK63A-SM1250-5.00	HSK63A	1-1/4"	5.00"	2.76"	0.65"	1/2"	5/8" -18

Note: For Balanceable HSK63A Shell Mill Holders, see page 217.

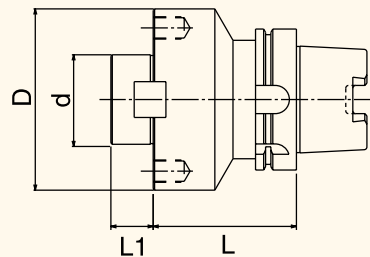
### HSK100A SHELL MILL HOLDERS



Part Number	Taper	d	L	D	L1	Key Size	Arbor Thread
HSK100A-SM0750-4.00	HSK100A	3/4"	4.00"	1.69"	.65"	5/16"	3/8" -24
HSK100A-SM0750-6.00	HSK100A	3/4"	6.00"	1.69"	.65"	5/16"	3/8" -24
HSK100A-SM1000-4.00	HSK100A	1"	4.00"	2.17"	.65"	3/8"	1/2" -20
HSK100A-SM1000-6.00	HSK100A	1"	6.00"	2.17"	.65"	3/8"	1/2" -20
HSK100A-SM1250-4.00	HSK100A	1-1/4"	4.00"	2.76"	.65"	1/2"	5/8" -18
HSK100A-SM1250-6.00	HSK100A	1-1/4"	6.00"	2.76"	.65"	1/2"	5/8" -18
HSK100A-SM1500-4.00	HSK100A	1-1/2"	4.00"	3.50"	.90"	5/8"	3/4" -16
HSK100A-SM1500-6.00	HSK100A	1-1/2"	6.00"	3.50"	.90"	5/8"	3/4" -16
HSK100A-SM2000-4.00	HSK100A	2"	4.00"	4.49"	.90"	3/4"	1" -14
HSK100A-SM2000-6.00	HSK100A	2"	6.00"	4.49"	.90"	3/4"	1" -14

Note: For Balanceable HSK100A Shell Mill Holders, see page 217.

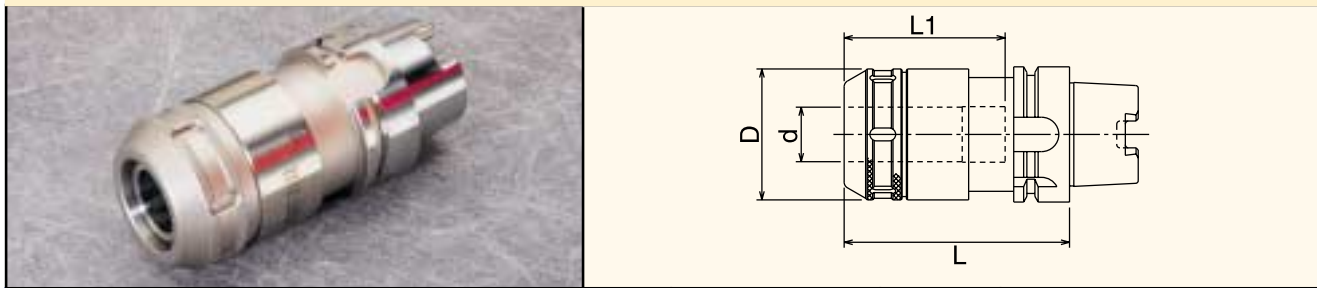
### HSK100A FACE MILL HOLDERS



Part Number	Taper	d	L	D	L1	Key Size
HSK100A-FM2000-4.00	HSK100A	2"	4.00"	5.06"	.87"	3/4"
HSK100A-FM2000-6.00	HSK100A	2"	6.00"	5.06"	.87"	3/4"
HSK100A-FM2500-4.00	HSK100A	2-1/2"	4.00"	5.06"	1.50"	1.00"
HSK100A-FM2500-6.00	HSK100A	2-1/2"	6.00"	5.06"	1.50"	1.00"

Note: Face Mill Holders are supplied with four 5/8-11 mounting bolts.

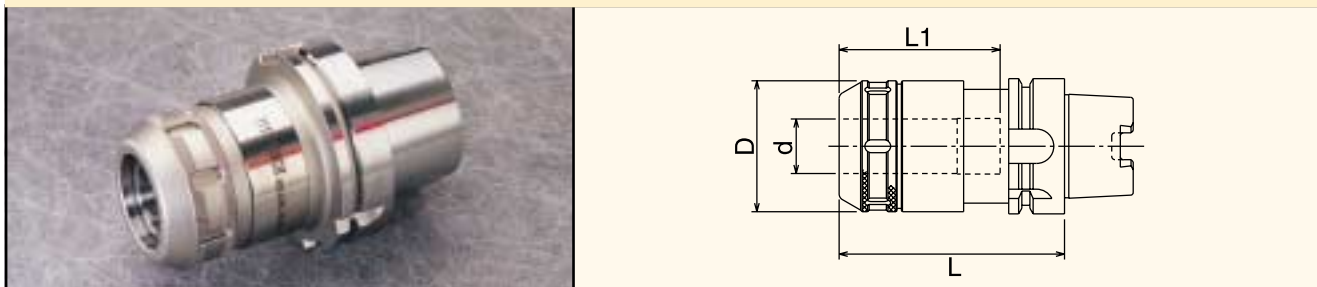
### HSK63A MILLING CHUCKS



Part Number	Taper	Collet Series	Clamping Range	L	L1	D
HSK63A-MC0750-105	HSK63A	S750	.125 - .750"	4.13"	2.95"	2.05"
HSK63A-MC0750-150	HSK63A	S750	.125 - .750"	5.91"	2.95"	2.05"
HSK63A-MC1000-105	HSK63A	S1000	.125 - 1.00"	4.13"	2.95"	2.40"
HSK63A-MC1000-150	HSK63A	S1000	.125 - 1.00"	5.91"	2.95"	2.40"
HSK63A-MC1250-110	HSK63A	S1250	.187 - 1.25"	4.33"	3.15"	2.88"
HSK63A-MC1250-150	HSK63A	S1250	.187 - 1.25"	5.91"	3.15"	2.88"

Note: Each toolholder comes equipped with a coolant tube.  
See page 82 for Milling Chuck features and specifications.

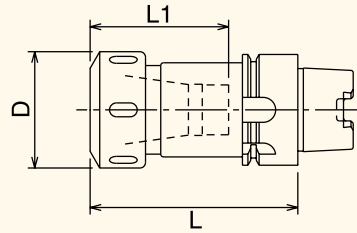
### HSK100A MILLING CHUCKS



Part Number	Taper	Collet Series	Clamping Range	L	L1	D
HSK100A-MC0750-105	HSK100A	S750	.125 - .750"	4.13"	2.76"	2.05"
HSK100A-MC0750-150	HSK100A	S750	.125 - .750"	5.91"	3.15"	2.05"
HSK100A-MC1000-105	HSK100A	S1000	.125 - 1.00"	4.13"	2.76"	2.40"
HSK100A-MC1000-150	HSK100A	S1000	.125 - 1.00"	5.91"	3.15"	2.40"
HSK100A-MC1250-105	HSK100A	S1250	.187 - 1.25"	4.13"	2.76"	2.88"
HSK100A-MC1250-150	HSK100A	S1250	.187 - 1.25"	5.91"	4.53"	2.88"
HSK100A-MC2000-120	HSK100A	S2000	1.00 - 2.00"	4.72"	3.35"	3.94"
HSK100A-MC2000-135	HSK100A	S2000	1.00 - 2.00"	5.31"	3.35"	3.94"

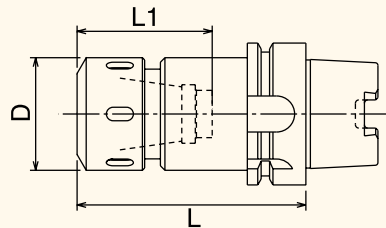
Note: For Milling Chucks collets, see pages 86-90.  
For Balanceable HSK Milling Chucks, see page 218.

### HSK40A ER COLLET CHUCKS



Part Number	Taper	Collet Series	Collet Range	L	L1	D
HSK40A-ER11-75	HSK40A	ER11	.019-.275"	2.95"	1.30"	.630"
HSK40A-ER16-75	HSK40A	ER16	.019-.406"	2.95"	1.42"	1.18"
HSK40A-ER20-75	HSK40A	ER20	.039-.511"	2.95"	1.97"	1.38"
HSK40A-ER25-80	HSK40A	ER25	.039-.629"	3.15"	1.97"	1.66"
HSK40A-ER32-80	HSK40A	ER32	.078-.787"	3.15"	2.36"	1.97"

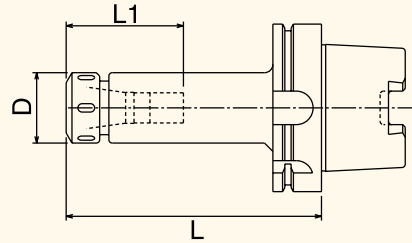
### HSK63A ER COLLET CHUCKS



Part Number	Taper	Collet Series	Collet Range	L	L1	D
HSK63A-ER16-3.00	HSK63A	ER16	.019-.406"	3.00"	1.44"	1.18"
HSK63A-ER16-5.00	HSK63A	ER16	.019-.406"	5.00"	2.05"	1.18"
HSK63A-ER20-3.00	HSK63A	ER20	.039-.511"	3.00"	1.77"	1.38"
HSK63A-ER20-5.00	HSK63A	ER20	.039-.511"	5.00"	2.36"	1.38"
HSK63A-ER25-3.00	HSK63A	ER25	.039-.629"	3.00"	1.77"	1.66"
HSK63A-ER25-5.00	HSK63A	ER25	.039-.629"	5.00"	2.76"	1.66"
HSK63A-ER32-4.00	HSK63A	ER32	.078-.787"	4.00"	2.36"	1.97"
HSK63A-ER32-6.00	HSK63A	ER32	.078-.787"	6.00"	3.15"	1.97"
HSK63A-ER40-4.00	HSK63A	ER40	.118-1.023"	4.00"	2.56"	2.36"
HSK63A-ER40-6.00	HSK63A	ER40	.118-1.023"	6.00"	2.76"	2.36"

Note: For Balanceable HSK ER Collet Chucks, see pages 219-220.

### HSK100A ER COLLET CHUCKS

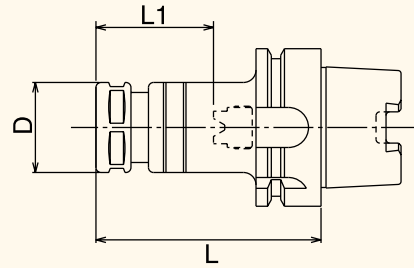


Part Number	Taper	Collet Series	Collet Range	L	L1	D
HSK100A-ER16-4.00	HSK100A	ER16	.019-.406"	4.00"	2.05"	1.18"
HSK100A-ER16-6.00	HSK100A	ER16	.019-.406"	6.00"	2.05"	1.18"
HSK100A-ER20-4.00	HSK100A	ER20	.039-.511"	4.00"	1.97"	1.38"
HSK100A-ER20-6.00	HSK100A	ER20	.039-.511"	6.00"	2.36"	1.38"
HSK100A-ER25-4.00	HSK100A	ER25	.039-.629"	4.00"	1.97"	1.66"
HSK100A-ER25-6.00	HSK100A	ER25	.039-.629"	6.00"	2.76"	1.66"
HSK100A-ER32-4.00	HSK100A	ER32	.078-.787"	4.00"	2.56"	1.97"
HSK100A-ER32-6.00	HSK100A	ER32	.078-.787"	6.00"	3.15"	1.97"
HSK100A-ER40-4.00	HSK100A	ER40	.118-1.023"	4.00"	2.56"	2.36"
HSK100A-ER40-6.00	HSK100A	ER40	.118-1.023"	6.00"	3.54"	2.36"

Note: Each toolholder comes equipped with a coolant tube.  
For ER Collets, see pages 121-135.

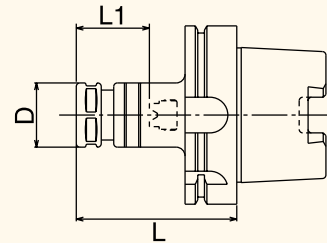


### HSK63A FDC COLLET CHUCKS



Part Number	Taper	Collet Series	Collet Range	L	L1	D
HSK63A-FDC07-75	HSK63A	FDC 07	0.5-7mm (0.019-.275")	2.95"	1.34"	0.91"
HSK63A-FDC07-120	HSK63A	FDC 07	0.5-7mm (0.019-.275")	4.72"	1.77"	0.91"
HSK63A-FDC09-90	HSK63A	FDC 09	2.5-9mm (0.098-.354")	3.54"	1.65"	1.02"
HSK63A-FDC09-120	HSK63A	FDC 09	2.5-9mm (0.098-.354")	4.72"	2.24"	1.02"
HSK63A-FDC16-90	HSK63A	FDC 16	3.5-16mm (0.138-.629")	3.54"	1.85"	1.42"
HSK63A-FDC16-150	HSK63A	FDC 16	3.5-16mm (0.138-.629")	5.91"	3.19"	1.42"
HSK63A-FDC22-105	HSK63A	FDC 22	3.5-22mm (0.138-.866")	4.13"	1.85"	1.82"
HSK63A-FDC22-150	HSK63A	FDC 22	3.5-22mm (0.138-.866")	5.91"	3.62"	1.82"

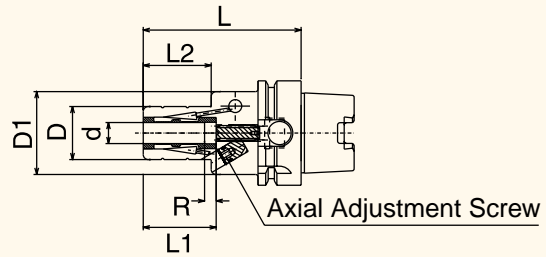
### HSK100A FDC COLLET CHUCKS



Part Number	Taper	Collet Series	Collet Range	L	L1	D
HSK100A-FDC07-90	HSK100A	FDC 07	0.5-7mm (0.019-.275")	3.54"	1.77"	0.91"
HSK100A-FDC07-120	HSK100A	FDC 07	0.5-7mm (0.019-.275")	4.72"	1.77"	0.91"
HSK100A-FDC09-75	HSK100A	FDC 09	2.5-9mm (0.098-.354")	2.95"	1.06"	1.02"
HSK100A-FDC09-120	HSK100A	FDC 09	2.5-9mm (0.098-.354")	4.72"	2.24"	1.02"
HSK100A-FDC16-90	HSK100A	FDC 16	3.5-16mm (0.138-.629")	3.54"	1.61"	1.42"
HSK100A-FDC16-150	HSK100A	FDC 16	3.5-16mm (0.138-.629")	5.91"	3.19"	1.42"
HSK100A-FDC22-105	HSK100A	FDC 22	3.5-22mm (0.138-.866")	4.13"	1.91"	1.82"
HSK100A-FDC22-150	HSK100A	FDC 22	3.5-22mm (0.138-.866")	5.91"	3.15"	1.82"

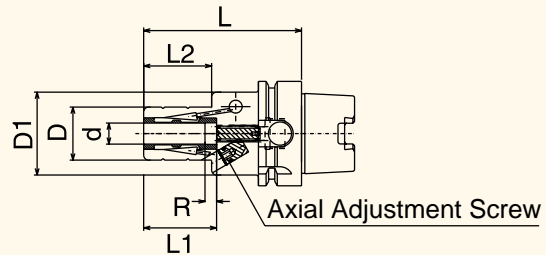
Note: For FDC Collets, see pages 140-145.  
Each toolholder comes equipped with a coolant tube.

### HSK63A HYDRAULIC CHUCKS



Part Number	Taper	d	L	L1	R	L2	D	D1
HSK63A-HH0250	HSK63A	1/4"	3.75"	1.50"	0.39"	1.22"	1.02"	1.97"
HSK63A-HH0375	HSK63A	3/8"	3.75"	1.65"	0.39"	1.38"	1.18"	1.97"
HSK63A-HH0500	HSK63A	1/2"	3.75"	1.73"	0.39"	1.61"	1.26"	1.97"
HSK63A-HH0625	HSK63A	5/8"	3.75"	1.85"	0.39"	1.81"	1.50"	1.97"
HSK63A-HH0750	HSK63A	3/4"	3.75"	1.85"	0.39"	1.81"	1.50"	1.97"
HSK63A-HH1000	HSK63A	1"	4.50"	2.40"	0.39"	2.13"	1.85"	2.09"

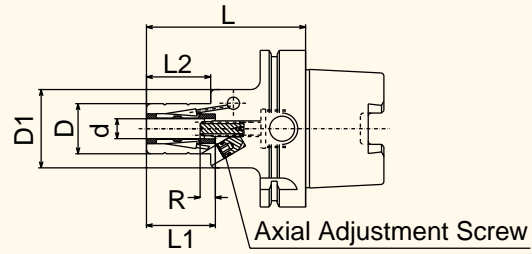
### HSK63A HYDRAULIC CHUCKS (METRIC)



Part Number	Taper	d	L	L1	R	L2	D	D1
HSK63A-HH6	HSK63A	6mm	80mm	38mm	10mm	31mm	26mm	50mm
HSK63A-HH8	HSK63A	8mm	80mm	38mm	10mm	31mm	28mm	50mm
HSK63A-HH10	HSK63A	10mm	85mm	42mm	10mm	35mm	30mm	50mm
HSK63A-HH12	HSK63A	12mm	90mm	44mm	10mm	41mm	32mm	50mm
HSK63A-HH16	HSK63A	16mm	95mm	47mm	10mm	46mm	38mm	50mm
HSK63A-HH18	HSK63A	18mm	95mm	47mm	10mm	46mm	40mm	50mm
HSK63A-HH20	HSK63A	20mm	100mm	52mm	10mm	51mm	42mm	50mm
HSK63A-HH25	HSK63A	25mm	115mm	61mm	10mm	54mm	47mm	55mm

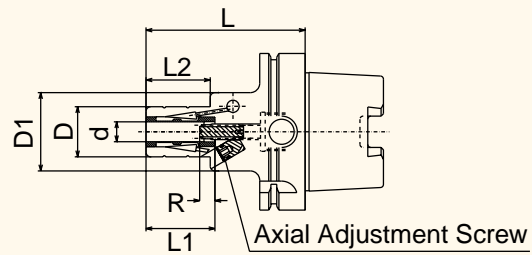
Note: All HSK63A Hydraulic Chucks are pre-balanced to G2.5 at 20,000 rpm.

### HSK100A HYDRAULIC CHUCKS



Part Number	Taper	d	L	L1	R	L2	D	D1
HSK100A-HH0250	HSK100A	1/4"	4.00"	1.50"	0.39"	1.22"	1.02"	1.97"
HSK100A-HH0375	HSK100A	3/8"	4.00"	1.65"	0.39"	1.38"	1.19"	1.97"
HSK100A-HH0500	HSK100A	1/2"	4.00"	1.73"	0.39"	1.61"	1.26"	1.97"
HSK100A-HH0625	HSK100A	5/8"	4.00"	1.85"	0.39"	1.81"	1.50"	1.97"
HSK100A-HH0750	HSK100A	3/4"	4.00"	1.85"	0.39"	1.81"	1.50"	1.97"
HSK100A-HH1000	HSK100A	1"	5.00"	2.40"	0.39"	2.13"	1.85"	2.17"
HSK100A-HH1250	HSK100A	1-1/4"	5.00"	2.56"	0.39"	2.13"	2.14"	2.52"

### HSK100A HYDRAULIC CHUCKS (METRIC)



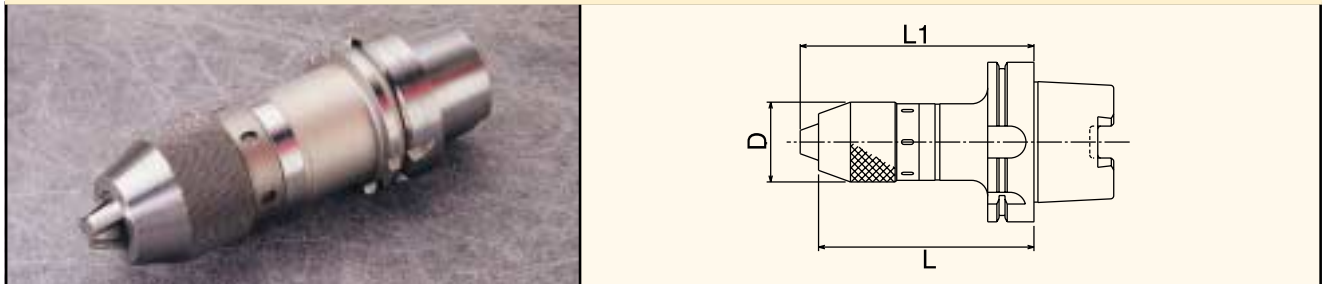
Part Number	Taper	d	L	L1	R	L2	D	D1
HSK100A-HH6	HSK100A	6mm	85mm	38mm	10mm	31mm	26mm	50mm
HSK100A-HH8	HSK100A	8mm	85mm	38mm	10mm	31mm	28mm	50mm
HSK100A-HH10	HSK100A	10mm	90mm	42mm	10mm	35mm	30mm	50mm
HSK100A-HH12	HSK100A	12mm	95mm	44mm	10mm	41mm	32mm	50mm
HSK100A-HH16	HSK100A	16mm	100mm	47mm	10mm	46mm	38mm	50mm
HSK100A-HH18	HSK100A	18mm	100mm	47mm	10mm	46mm	40mm	50mm
HSK100A-HH20	HSK100A	20mm	105mm	52mm	10mm	51mm	42mm	50mm
HSK100A-HH25	HSK100A	25mm	115mm	61mm	10mm	54mm	47mm	55mm
HSK100A-HH32	HSK100A	32mm	120mm	65mm	10mm	54mm	54mm	55mm

Note: All HSK100A Hydraulic Chucks are pre-balanced to G2.5 at 15,000 rpm.

### INTEGRAL SHANK KEYLESS DRILL CHUCKS

These chucks provide exceptionally high torque – up to three times the gripping strength of conventional drill chuck/taper holder combinations. The design eliminates any possibility of chuck/holder misalignment, and it assures separation safety. They also feature a corrosion-resisting surface treatment to assure durability.

### HSK DRILL CHUCKS

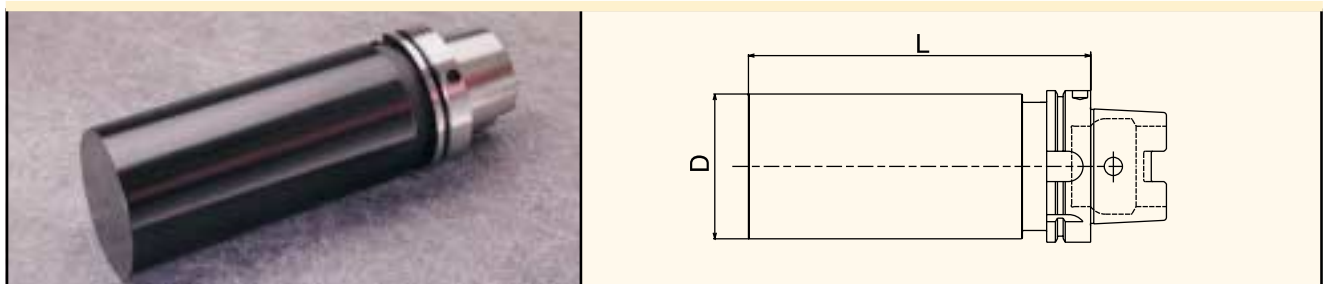


Part Number	Taper	Capacity	L	D
HSK40A-DC0250	HSK40A	1/4"	3.98"	1.34"
HSK63A-DC0500	HSK63A	1/2"	5.31"	1.97"
HSK100A-DC0500	HSK100A	1/2"	5.31"	1.97"

### BLANK BARS

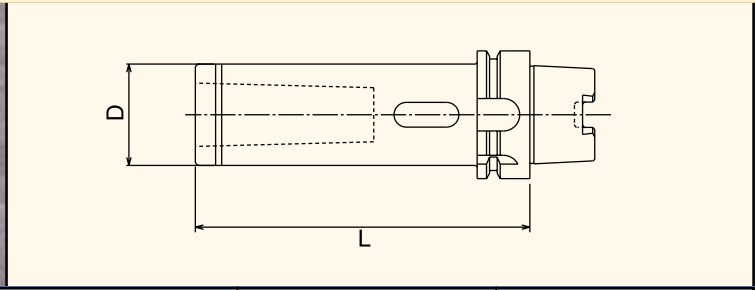
Our Blank Bars are suitable for all applications - even deep boring. While the tapers are ground and hardened, their projections are not.

### HSK TAPER BLANK BARS



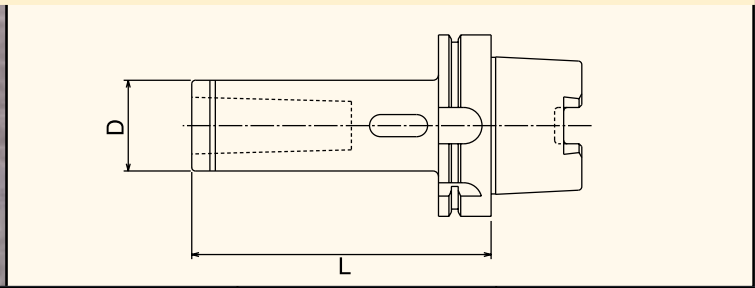
Part Number	Taper	L	D
HSK40A-BLANK-8.00	HSK40A	8.00"	2.00"
HSK63A-BLANK-13.00	HSK63A	13.00"	2.50"
HSK100A-BLANK-13.00	HSK100A	13.00"	3.75"

### HSK63A MORSE TAPER HOLDERS



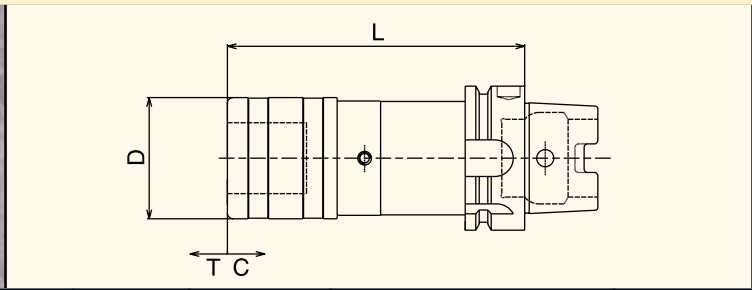
Part Number	Taper	Size	L	D
HSK63A-MT001	HSK63A	MT#1	4.13"	.99"
HSK63A-MT002	HSK63A	MT#2	4.73"	1.26"
HSK63A-MT003	HSK63A	MT#3	5.91"	1.57"
HSK63A-MT004	HSK63A	MT#4	6.50"	1.97"

### HSK100A MORSE TAPER HOLDERS



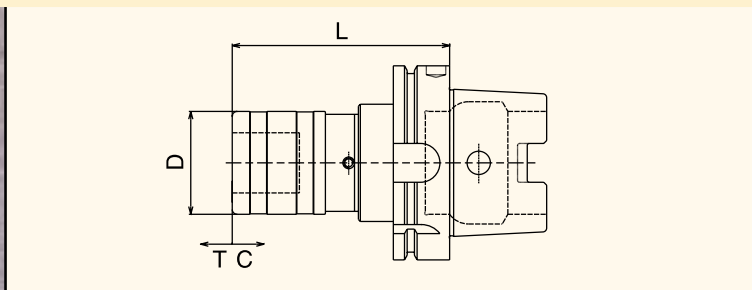
Part Number	Taper	Size	L	D
HSK100A-MT001	HSK100A	MT#1	4.13"	.99"
HSK100A-MT002	HSK100A	MT#2	4.73"	1.26"
HSK100A-MT003	HSK100A	MT#3	5.31"	1.57"
HSK100A-MT004	HSK100A	MT#4	6.50"	1.97"
HSK100A-MT005	HSK100A	MT#5	7.68"	2.56"

### HSK63A TENSION/COMPRESSION TAP HOLDERS



Part Number	Taper	Tap Range		System	L	D	T	C
		Hand	Pipe					
HSK63A-TC0562	HSK63A	#0-9/16"	1/8"	#1	3.15"	1.43"	.29"	.29"
HSK63A-TC0875	HSK63A	5/16-7/8"	1/4-1/2"	#2	5.12"	2.09"	.49"	.49"
HSK63A-TC1375	HSK63A	13/16-1-3/8"	1/2-1"	#3	6.50"	3.07"	.79"	.79"

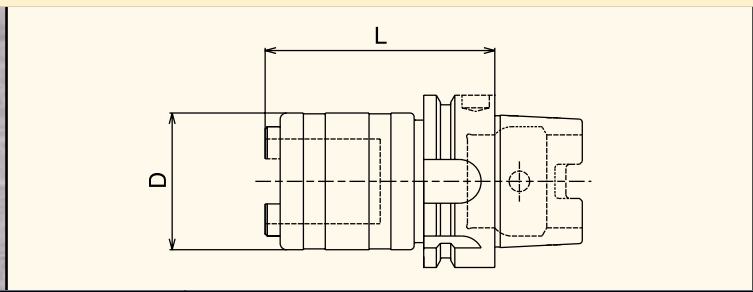
### HSK100A TENSION/COMPRESSION TAP HOLDERS



Part Number	Taper	Tap Range		System	L	D	T	C
		Hand	Pipe					
HSK100A-TC0562	HSK100A	#0-9/16"	1/8"	#1	3.23"	1.43"	.29"	.29"
HSK100A-TC0875	HSK100A	5/16-7/8"	1/4-1/2"	#2	4.41"	2.09"	.49"	.49"
HSK100A-TC1375	HSK100A	13/16-1-3/8"	1/2-1"	#3	6.38"	3.07"	.79"	.79"

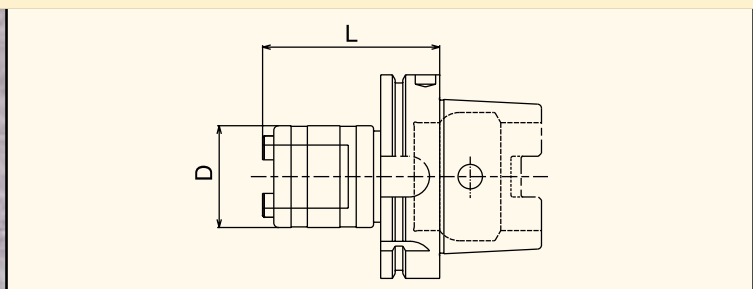
Note: For Tap Collets, see pages 173-185.

### HSK40A/63A RIGID TAP HOLDERS



Part Number	Taper	Tap Range		System	L	D
		Hand	Pipe			
HSK40A-R0562	HSK40A	#0-9/16"	1/8"	#1	3.15"	1.50"
HSK63A-R0562	HSK63A	#0-9/16"	1/8"	#1	2.48"	1.26"
HSK63A-R0875	HSK63A	5/16-7/8"	1/4-1/2"	#2	3.31"	1.97"
HSK63A-R1375	HSK63A	13/16-1-3/8"	1/2-1"	#3	5.12"	2.83"

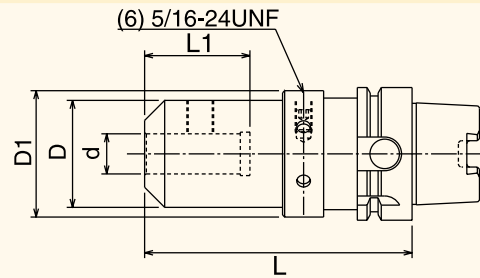
### HSK100A RIGID TAP HOLDERS



Part Number	Taper	Tap Range		System	L	D
		Hand	Pipe			
HSK100A-R0562	HSK100A	#0-9/16"	1/8"	#1	2.60"	1.26"
HSK100A-R0875	HSK100A	5/16-7/8"	1/4-1/2"	#2	3.42"	1.97"
HSK100A-R1375	HSK100A	13/16-1-3/8"	1/2-1"	#3	4.57"	2.83"

Note: These holders are designed for use with synchronized machining centers.  
 The holders have no tension or compression.  
 Tap Collets are listed on pages 173-185.

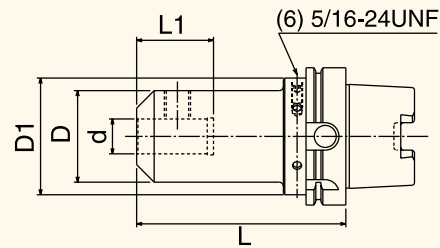
### HSK63A BALANCEABLE END MILL HOLDERS



Part Number	Taper	d	L	L1	D	D1	Set Screw
B/HSK63A-0187-3.00	HSK63A	3/16"	3.00"	1.10"	.867"	2.09"	8-32X1/4
B/HSK63A-0187-5.00	HSK63A	3/16"	5.00"	1.10"	.867"	2.09"	8-32X1/4
B/HSK63A-0250-3.00	HSK63A	1/4"	3.00"	1.42"	.985"	2.09"	1/4-28X1/4
B/HSK63A-0250-5.00	HSK63A	1/4"	5.00"	1.42"	.985"	2.09"	1/4-28X1/4
B/HSK63A-0312-3.00	HSK63A	5/16"	3.00"	1.42"	1.00"	2.09"	5/16-24X1/4
B/HSK63A-0312-5.00	HSK63A	5/16"	5.00"	1.42"	1.00"	2.09"	5/16-24X1/4
B/HSK63A-0375-3.50	HSK63A	3/8"	3.50"	1.58"	1.38"	2.09"	3/8-24X5/16
B/HSK63A-0375-5.00	HSK63A	3/8"	5.00"	1.58"	1.38"	2.09"	3/8-24X5/16
B/HSK63A-0437-4.00	HSK63A	7/16"	4.00"	1.77"	1.65"	2.09"	3/8-24X5/16
B/HSK63A-0437-5.00	HSK63A	7/16"	5.00"	1.77"	1.65"	2.09"	3/8-24X5/16
B/HSK63A-0500-4.00	HSK63A	1/2"	4.00"	1.77"	1.63"	2.09"	3/8-24X5/16
B/HSK63A-0500-5.00	HSK63A	1/2"	5.00"	1.77"	1.63"	2.09"	3/8-24X5/16
B/HSK63A-0625-4.00	HSK63A	5/8"	4.00"	1.89"	1.81"	2.09"	1/2-20X5/16
B/HSK63A-0625-5.00	HSK63A	5/8"	5.00"	1.89"	1.81"	2.09"	1/2-20X5/16
B/HSK63A-0750-4.50	HSK63A	3/4"	4.50"	1.97"	2.00"	2.36"	1/2-20X5/16
B/HSK63A-0750-6.00	HSK63A	3/4"	6.00"	1.97"	2.00"	2.36"	1/2-20X5/16
B/HSK63A-1000-4.50	HSK63A	1"	4.50"	2.20"	2.63"	2.74"	3/4-16X11/16 (2)
B/HSK63A-1000-6.00	HSK63A	1"	6.00"	2.20"	2.63"	2.74"	3/4-16X11/16 (2)
B/HSK63A-1250-4.50	HSK63A	1-1/4"	4.50"	2.35"	2.88"	2.88"	3/4-16X11/16 (2)
B/HSK63A-1250-6.00	HSK63A	1-1/4"	6.00"	2.36"	2.88"	2.88"	3/4-16X11/16 (2)

Note: Each toolholder comes equipped with a coolant tube and set screws.


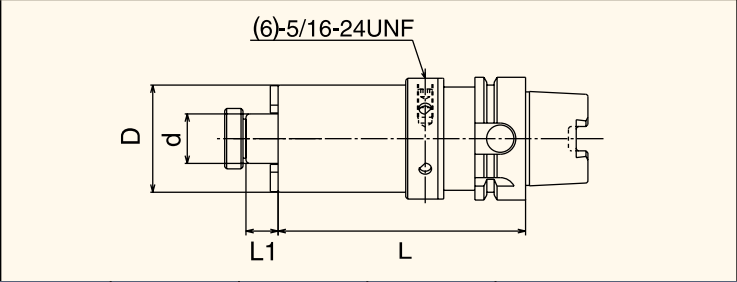
### HSK100A BALANCEABLE END MILL HOLDERS




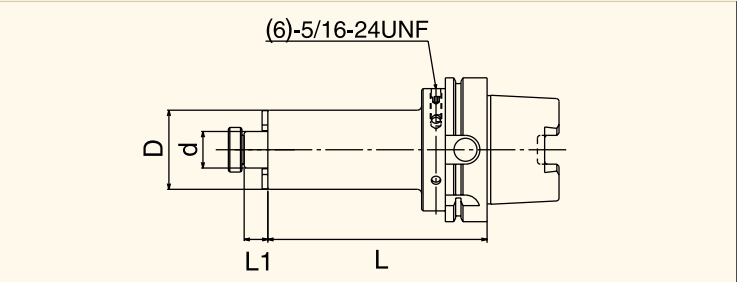
Part Number	Taper	d	L	L1	D	D1	Set Screw
B/HSK100A-0187-4.00	HSK100A	3/16"	4.00"	1.10"	0.87"	3.35"	8-32X1/4
B/HSK100A-0187-6.00	HSK100A	3/16"	6.00"	1.10"	0.87"	3.35"	8-32X1/4
B/HSK100A-0250-4.00	HSK100A	1/4"	4.00"	1.42"	0.98"	3.35"	1/4-28X1/4
B/HSK100A-0250-6.00	HSK100A	1/4"	6.00"	1.42"	0.98"	3.35"	1/4-28X1/4
B/HSK100A-0312-4.00	HSK100A	5/16"	4.00"	1.42"	1.00"	3.35"	5/16-24X1/4
B/HSK100A-0312-6.00	HSK100A	5/16"	6.00"	1.42"	1.00"	3.35"	5/16-24X1/4
B/HSK100A-0375-4.00	HSK100A	3/8"	4.00"	1.56"	1.38"	3.35"	3/8-24X5/16
B/HSK100A-0375-6.00	HSK100A	3/8"	6.00"	1.56"	1.38"	3.35"	3/8-24X5/16
B/HSK100A-0437-4.00	HSK100A	7/16"	4.00"	1.77"	1.65"	3.35"	3/8-24X5/16
B/HSK100A-0437-6.00	HSK100A	7/16"	6.00"	1.77"	1.65"	3.35"	3/8-24X5/16
B/HSK100A-0500-4.00	HSK100A	1/2"	4.00"	1.77"	1.63"	3.35"	3/8-24X5/16
B/HSK100A-0500-6.00	HSK100A	1/2"	6.00"	1.77"	1.63"	3.35"	3/8-24X5/16
B/HSK100A-0625-4.00	HSK100A	5/8"	4.00"	1.89"	1.81"	3.35"	1/2-20X5/16
B/HSK100A-0625-6.00	HSK100A	5/8"	6.00"	1.89"	1.81"	3.35"	1/2-20X5/16
B/HSK100A-0750-4.00	HSK100A	3/4"	4.00"	1.97"	2.00"	3.35"	1/2-20X5/16
B/HSK100A-0750-6.00	HSK100A	3/4"	6.00"	1.97"	2.00"	3.35"	1/2-20X5/16
B/HSK100A-1000-4.00	HSK100A	1"	4.00"	2.20"	2.63"	3.35"	3/4-16X11/16 (2)
B/HSK100A-1000-6.00	HSK100A	1"	6.00"	2.20"	2.63"	3.35"	3/4-16X11/16 (2)
B/HSK100A-1250-4.00	HSK100A	1-1/4"	4.00"	2.36"	2.88"	3.35"	3/4-16X11/16 (2)
B/HSK100A-1250-6.00	HSK100A	1-1/4"	6.00"	2.36"	2.88"	3.35"	3/4-16X11/16 (2)

Note: Each toolholder comes equipped with a coolant tube and set screws.

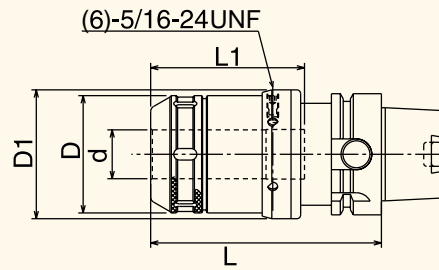
### HSK63A BALANCEABLE SHELL MILL HOLDERS

							
	Part Number	Taper	d	L	D	L1	Key Size
B/HSK63A-SM0750-3.00	HSK63A	3/4"	3.00"	1.69"	0.65"	5/16"	3/8" -24
B/HSK63A-SM0750-5.00	HSK63A	3/4"	5.00"	1.69"	0.65"	5/16"	3/8" -24
B/HSK63A-SM1000-3.00	HSK63A	1"	3.00"	2.17"	0.65"	3/8"	1/2" -20
B/HSK63A-SM1000-5.00	HSK63A	1"	5.00"	2.17"	0.65"	3/8"	1/2" -20
B/HSK63A-SM1250-3.00	HSK63A	1-1/4"	3.00"	2.76"	0.65"	1/2"	5/8" -18
B/HSK63A-SM1250-5.00	HSK63A	1-1/4"	5.00"	2.76"	0.65"	1/2"	5/8" -18

### HSK100A BALANCEABLE SHELL MILL HOLDERS

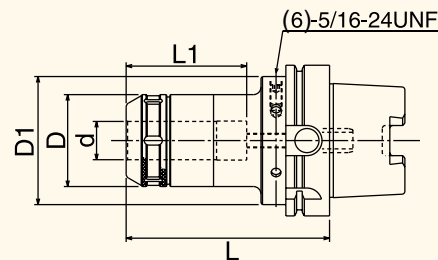
							
	Part Number	Taper	d	L	D	L1	Key Size
B/HSK100A-SM0750-4.00	HSK100A	3/4"	4.00"	1.69"	0.65"	5/16"	3/8" -24
B/HSK100A-SM0750-6.00	HSK100A	3/4"	6.00"	1.69"	0.65"	5/16"	3/8" -24
B/HSK100A-SM1000-4.00	HSK100A	1"	4.00"	2.17"	0.65"	3/8"	1/2" -20
B/HSK100A-SM1000-6.00	HSK100A	1"	6.00"	2.17"	0.65"	3/8"	1/2" -20
B/HSK100A-SM1250-4.00	HSK100A	1-1/4"	4.00"	2.76"	0.65"	1/2"	5/8" -18
B/HSK100A-SM1250-6.00	HSK100A	1-1/4"	6.00"	2.76"	0.65"	1/2"	5/8" -18
B/HSK100A-SM1500-4.00	HSK100A	1-1/2"	4.00"	3.50"	0.90"	5/8"	3/4" -16
B/HSK100A-SM1500-6.00	HSK100A	1-1/2"	6.00"	3.50"	0.90"	5/8"	3/4" -16

### HSK63A BALANCEABLE MILLING CHUCKS



Part Number	Taper	Collet Series	Clamping Range	L	L1	D	D1
B/HSK63A-MC0750-105	HSK63A	S750	.125 - .750"	4.13"	2.56"	2.05"	2.09"
B/HSK63A-MC0750-135	HSK63A	S750	.125 - .750"	5.31"	3.15"	2.05"	2.09"
B/HSK63A-MC1000-105	HSK63A	S1000	.125 - 1.00"	4.13"	2.56"	2.40"	2.09"
B/HSK63A-MC1000-135	HSK63A	S1000	.125 - 1.00"	5.31"	2.95"	2.40"	2.09"
B/HSK63A-MC1250-105	HSK63A	S1250	.187 - 1.25"	4.92"	2.75"	2.87"	2.87"
B/HSK63A-MC1250-135	HSK63A	S1250	.187 - 1.25"	5.31"	3.15"	2.87"	2.87"


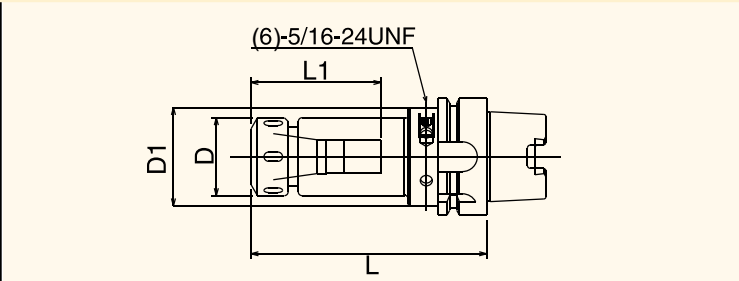
### HSK100A BALANCEABLE MILLING CHUCKS




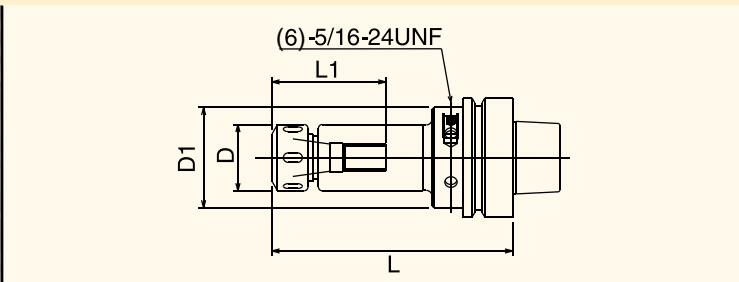
Part Number	Taper	Collet Series	Clamping Range	L	L1	D	D1
B/HSK100A-MC0750-105	HSK100A	S750	.125 - .750"	4.13"	2.76"	2.05"	3.35"
B/HSK100A-MC0750-135	HSK100A	S750	.125 - .750"	5.31"	3.15"	2.05"	3.35"
B/HSK100A-MC1000-105	HSK100A	S1000	.125 - 1.00"	4.13"	2.76"	2.40"	3.35"
B/HSK100A-MC1000-135	HSK100A	S1000	.125 - 1.00"	5.31"	3.15"	2.40"	3.35"
B/HSK100A-MC1250-115	HSK100A	S1250	.187 - 1.25"	4.52"	2.76"	2.87"	3.35"
B/HSK100A-MC1250-135	HSK100A	S1250	.187 - 1.25"	5.31"	3.54"	2.87"	3.35"

Note: Each toolholder comes equipped with a coolant tube.  
For Milling Chuck Collets, see pages 86-90.

### HSK63A BALANCEABLE ER COLLET CHUCKS

							
Part Number	Taper	Collet Series	Collet Range	L	L1	D	D1
B/HSK63A-ER16-3.00	HSK63A	ER16	.019-.406"	3.00"	1.44"	1.18"	2.09"
B/HSK63A-ER16-5.00	HSK63A	ER16	.019-.406"	5.00"	2.05"	1.18"	2.09"
B/HSK63A-ER20-3.50	HSK63A	ER20	.039-.511"	3.50"	1.97"	1.38"	2.09"
B/HSK63A-ER20-5.00	HSK63A	ER20	.039-.511"	5.00"	2.36"	1.38"	2.09"
B/HSK63A-ER25-3.50	HSK63A	ER25	.039-.629"	3.50"	1.97"	1.65"	2.09"
B/HSK63A-ER25-5.00	HSK63A	ER25	.039-.629"	5.00"	2.76"	1.65"	2.09"
B/HSK63A-ER32-4.00	HSK63A	ER32	.078-.787"	4.00"	2.36"	1.97"	2.09"
B/HSK63A-ER32-6.00	HSK63A	ER32	.078-.787"	6.00"	3.15"	1.97"	2.09"
B/HSK63A-ER40-5.00	HSK63A	ER40	.118-1.023"	5.00"	2.56"	2.36"	2.36"
B/HSK63A-ER40-6.00	HSK63A	ER40	.118-1.023"	6.00"	2.76"	2.36"	2.36"

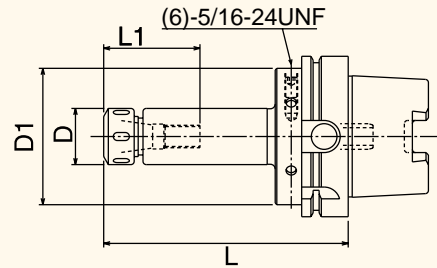
### HSK63F BALANCEABLE ER COLLET CHUCKS

							
Part Number	Taper	Collet Series	Collet Range	L	L1	D	D1
B/HSK63F-ER16-3.50	HSK63F	ER16	.019-.406"	3.50"	1.65"	1.18"	2.09"
B/HSK63F-ER16-5.00	HSK63F	ER16	.019-.406"	5.00"	2.05"	1.18"	2.09"
B/HSK63F-ER20-3.50	HSK63F	ER20	.039-.511"	3.50"	1.97"	1.38"	2.09"
B/HSK63F-ER20-5.00	HSK63F	ER20	.039-.511"	5.00"	2.36"	1.38"	2.09"
B/HSK63F-ER25-3.50	HSK63F	ER25	.039-.629"	3.50"	1.97"	1.65"	2.09"
B/HSK63F-ER25-5.00	HSK63F	ER25	.039-.629"	5.00"	2.76"	1.65"	2.09"
B/HSK63F-ER32-4.00	HSK63F	ER32	.078-.787"	4.00"	2.36"	1.97"	2.09"
B/HSK63F-ER32-6.00	HSK63F	ER32	.078-.787"	6.00"	3.15"	1.97"	2.09"
B/HSK63F-ER40-5.00	HSK63F	ER40	.118-1.023"	5.00"	2.56"	2.36"	2.36"
B/HSK63F-ER40-6.00	HSK63F	ER40	.118-1.023"	6.00"	2.76"	2.36"	2.36"

Note: Each toolholder comes equipped with a coolant tube.  
For ER Collets, see pages 121-135.



### HSK100A BALANCEABLE ER COLLET CHUCKS



Part Number	Taper	Collet Series	Collet Range	L	L1	D	D1
B/HSK100A-ER16-4.00	HSK100A	ER16	.019-.406"	4.00"	2.05"	1.18"	3.35"
B/HSK100A-ER16-6.00	HSK100A	ER16	.019-.406"	6.00"	2.05"	1.18"	3.35"
B/HSK100A-ER20-4.00	HSK100A	ER20	.039-.511"	4.00"	1.97"	1.38"	3.35"
B/HSK100A-ER20-6.00	HSK100A	ER20	.039-.511"	6.00"	2.36"	1.38"	3.35"
B/HSK100A-ER25-4.00	HSK100A	ER25	.039-.629"	4.00"	1.97"	1.65"	3.35"
B/HSK100A-ER25-6.00	HSK100A	ER25	.039-.629"	6.00"	2.76"	1.65"	3.35"
B/HSK100A-ER32-4.00	HSK100A	ER32	.078-.787"	4.00"	2.36"	1.97"	3.35"
B/HSK100A-ER32-6.00	HSK100A	ER32	.078-.787"	6.00"	3.15"	1.97"	3.35"
B/HSK100A-ER40-4.00	HSK100A	ER40	.118-1.023"	4.00"	2.36"	2.36"	3.35"
B/HSK100A-ER40-6.00	HSK100A	ER40	.118-1.023"	6.00"	3.54"	2.36"	3.35"

Note: Each toolholder comes equipped with a coolant tube.  
For ER Collets, see pages 121-135.