

FixedAngleHeads™

Fixed angle position provides increased productivity.

Drill and tap exact angles quickly and accurately.

Achieve precise cutting angles.

FlexHeads™

Add multiple angle capabilities to your existing machines.

Drill and tap in multiple planes.

FlexHead brings the tough jobs in line.



Technical Characteristics



Vernier Scale



Positioning Ring



Specially Designed Case

Minimize downtime

Lyndex FixedAngleHeads allow you to access previously unavailable planes, thus reducing the number of work setups needed to complete your complex jobs.

Extremely rigid and highly accurate

Lyndex FixedAngleHeads are equipped with hardened and ground spiral bevel gears and collet shafts. Each unit is also fitted with high precision angular contact bearings, assuring extreme rigidity and accuracy.

Their compact design maintains accurate spindle and tool center-line alignment while minimizing tool overhang - accuracy is maintained throughout the machining process from plane to plane.

Quick and simple setup

Lyndex provides you with a vernier scale for ease of orientation. Vernier scales help to orient the cutting tool location (0- 360°). The positioning pin and drive key slots can also be oriented (0- 360°) to match your machining center's spindle and automatic tool changer configuration by simply adjusting the positioning ring.

Their design allows them to be used in most ATCs and machine tool magazines without interference.

Versatile

FixedAngleHeads allow you to drill and tap angled holes quickly and accurately while maintaining your original setup. A specially designed case angled at 45° ensures an accurate cutting angle without the need to adjust or verify cutting angle.

FixedAngleHeads can be manufactured for coolant through the spindle providing coolant to the cutting tool in order to flush chips or cool the cutting edge. FixedAngleHeads come in a variety of different collet capacities to suit all of your needs for drilling and tapping.

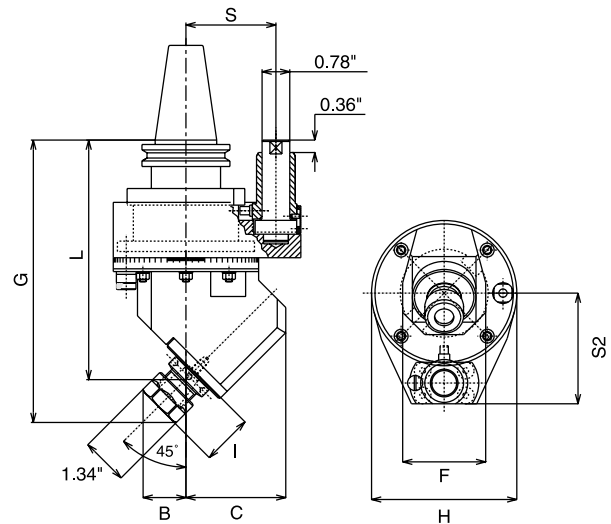
Special angles and configurations are available upon request.



ER20 FIXEDANGLEHEADS™

Features

- Rigid, accurate, and versatile.
- Ideal for drilling and tapping operations.
- This unit can be rotated 360° and is compatible with most Automatic Tool Changers (ATCs).
- A positioning block and a chuck nut wrench are included.
- Matches main spindle's rotation.
- Maximum speed: 4,000 RPM
- Gear ratio 1:1
- Maximum torque: 11 ft/lbs.
- ER20 Collets (0.039" to 0.511") are located on page 125.
- Weight 19 lbs.
- Coolant through the spindle is available upon request.
- Special configurations are available upon request.



Part Number	Taper	L	G	S	S2	C	B	F	H	I
C40FA-ER20-173-45	CT40	6.81"	8.03"	65mm	3.27"	2.83"	1.22"	2.36"	4.13"	1.41"
B40FA-ER20-181-45	BT40	7.13"	8.35"	65mm	3.27"	2.83"	1.22"	2.36"	4.13"	1.41"

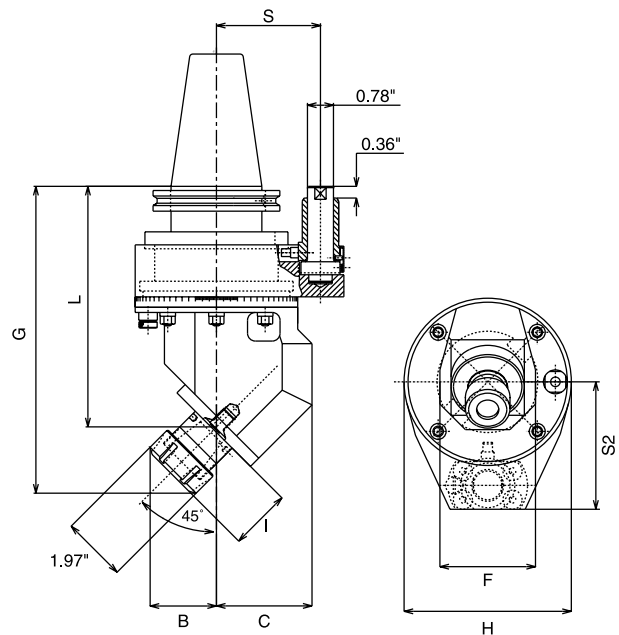
Note: Also available in 30° and 60°.



ER32 FIXEDANGLEHEADS™

Features

- Rigid, accurate, and versatile.
- Ideal for drilling and tapping operations.
- This unit can be rotated 360° and is compatible with most Automatic Tool Changers (ATCs).
- A positioning block and a chuck nut wrench are included.
- Matches main spindle's rotation.
- Maximum speed: 4,000 RPM
- Gear ratio 1:1
- Maximum torque: 27 ft/lbs.
- ER32 Collets (0.078" to 0.787") are located on page 127.
- Weight: 40 Taper - 23 lbs.
- Weight: 50 Taper - 30 lbs.
- Coolant through the spindle is available upon request.
- Special configurations are available upon request.



Part Number	Taper	L	G	S	S2	C	B	F	H	I
C40FA-ER32-185-45	CT40	7.28"	9.29"	65mm	3.27"	2.89"	2.01"	3.15"	4.92"	1.97"
C50FA-ER32-185-45	CT50	7.28"	9.29"	80mm	3.85"	2.89"	2.01"	3.15"	4.92"	1.97"
B40FA-ER32-193-45	BT40	7.60"	9.61"	65mm	3.27"	2.89"	2.01"	3.15"	4.92"	1.97"
B50FA-ER32-193-45	BT50	7.60"	9.61"	80mm	3.85"	2.89"	2.01"	3.15"	4.92"	1.97"

Technical Characteristics



Vernier Scale - Body



Vernier Scale - Angle



Positioning Ring

FlexHeads unique features minimize downtime

The multi-axis positioning of the FlexHead allows total rotational and compound angle settings. FlexHead delivers unmatched flexibility to perform multiple, complex operations without costly additional work setups or fixtures.

Highly accurate

Lyndex FlexHeads are equipped with hardened and ground spiral bevel gears and collet shafts. Each unit is also fitted with high precision angular contact bearings, assuring extreme rigidity and accuracy.

The secure multiple dual compression locking system eliminates angle variation during machining.

Quick and simple setup

Lyndex provides you with two vernier scales for ease of orientation. The first vernier scale orients the cutting tool's radial position (0-360°). The second scale sets the desired angle of the cutting tool (0-90°). The positioning pin and drive key slots can also be oriented (0 – 360°) to match your machining center's spindle and automatic tool changer configuration by simply adjusting the positioning ring. Their design allows them to be used in most ATCs and machine tool magazines without interference.

Versatile

The FlexHeads allow you to drill and tap angled holes quickly and accurately while maintaining your original setup. It is an ideal unit for a shop that has varying needs on a daily basis, allowing for angle adjustment on a job-by-job basis.

The FlexHeads can be manufactured for coolant through the spindle, providing coolant to the cutting tool in order to flush chips or cool the cutting edge. FlexHeads come in a variety of different collet capacities to suit all of your needs for drilling and tapping.

Special configurations are available upon request.

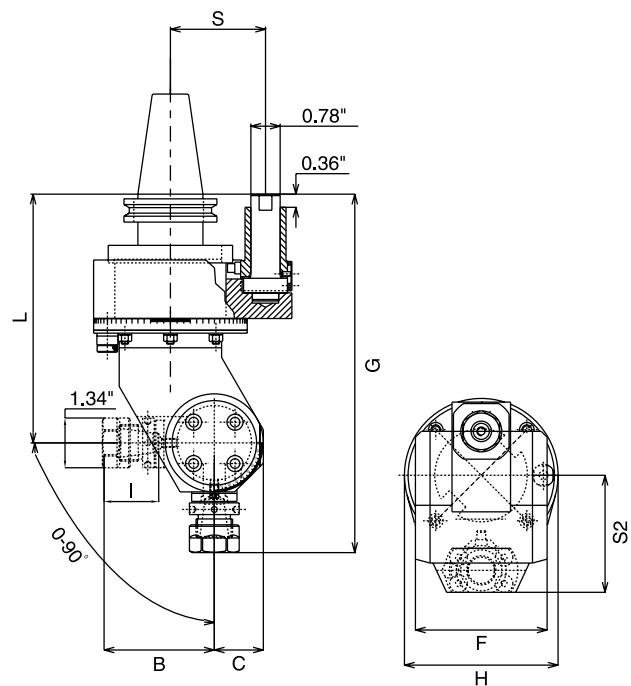


ER20 FLEXHEADS™

Features

- 360° angle positioning with precise independent vernier alignment.
- The body can be rotated 360° and is compatible with most Automatic Tool Changers (ATCs).
- A positioning block and a chuck nut wrench are included.
- Matches main spindle's speed (rotation is reversed)
- Maximum speed: 4,000 RPM

- Gear ratio 1:1
- Maximum torque: 11 ft/lbs.
- ER20 Collets (0.039" to 0.511") are located on page 125.
- Weight: 40 Taper - 20 lbs.
- Weight: 50 Taper - 26 lbs.
- Coolant through the spindle is available upon request.
- Special configurations are available upon request.



Part Number	Taper	L	G	S	S2	C	B	F	H	I
C40FH-ER20-170	CT40	6.69"	9.65"	65mm	3.27"	1.32"	3.01"	3.38"	4.13"	1.41"
C50FH-ER20-170	CT50	6.69"	9.65"	80mm	3.85"	1.32"	3.01"	3.38"	4.13"	1.41"
B40FH-ER20-178	BT40	7.01"	9.96"	65mm	3.27"	1.32"	3.01"	3.38"	4.13"	1.41"
B50FH-ER20-178	BT50	7.01"	9.96"	80mm	3.85"	1.32"	3.01"	3.38"	4.13"	1.41"

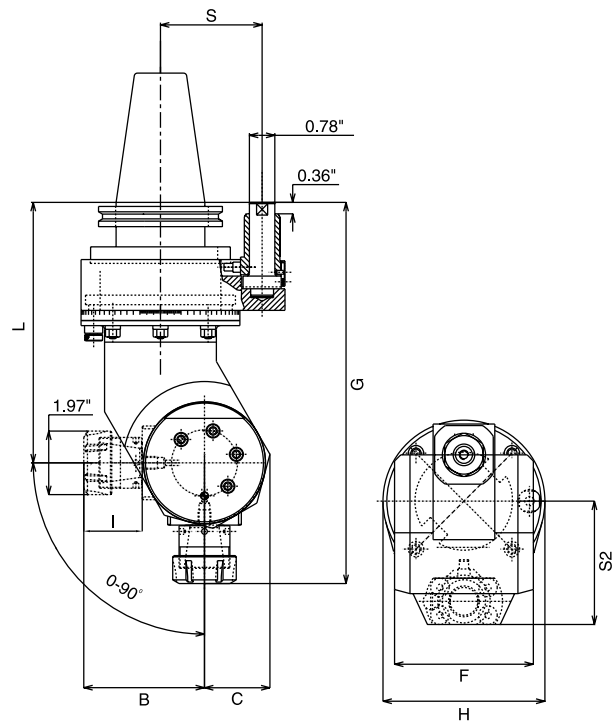


ER32 FLEXHEADS™

Features

- 360° angle positioning with precise independent vernier alignment.
- The body can be rotated 360° and is compatible with most Automatic Tool Changers (ATCs).
- A positioning block and a chuck nut wrench are included.
- Matches main spindle's speed (rotation is reversed)
- Maximum speed: 4,000 RPM

- Gear ratio 1:1
- Maximum torque: 37 ft/lbs.
- ER32 Collets (0.078" to 0.787") are located on page 127.
- Weight: 40 Taper - 24 lbs.
- Weight: 50 Taper - 30 lbs.
- Coolant through the spindle is available upon request.
- Special configurations are available upon request.



Part Number	Taper	L	G	S	S2	C	B	F	H	I
C40FH-ER32-205	CT40	8.07"	11.81"	65mm	3.27"	2.05"	3.74"	4.96"	4.92"	1.81"
C50FH-ER32-205	CT50	8.07"	11.81"	80mm	3.85"	2.05"	3.74"	4.96"	4.92"	1.81"
B40FH-ER32-213	BT40	8.39"	12.13"	65mm	3.27"	2.05"	3.74"	4.96"	4.92"	1.81"
B50FH-ER32-213	BT50	8.39"	12.13"	80mm	3.85"	2.05"	3.74"	4.96"	4.92"	1.81"

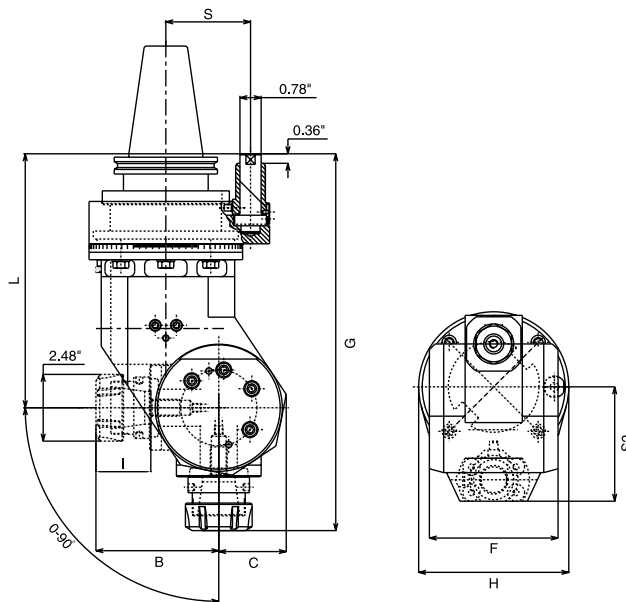


ER40 FLEXHEADS™

Features

- 360° angle positioning with precise independent vernier alignment.
- The body can be rotated 360° and is compatible with most Automatic Tool Changers (ATCs).
- A positioning block and a chuck nut wrench are included.
- Matches main spindle's speed (rotation is reversed)
- Maximum speed: 4,000 RPM

- Gear ratio 1:1
- Maximum torque: 110 ft/lbs.
- ER40 Collets (0.118" to 1.023") are located on page 128.
- Weight: 49 lbs.
- Coolant through the spindle is available upon request.
- Special configurations are available upon request.



Part Number	Taper	L	G	S	S2	C	B	F	H	I
C50FH-ER40-240	CT50	9.45"	14.02"	80mm	3.85"	2.52"	4.53"	6.26"	5.71"	2.01"
B50FH-ER40-248	BT50	9.76"	14.33"	80mm	3.85"	2.52"	4.53"	6.26"	5.71"	2.01"