

# OPTIONAL ACCESSORIES



**M5C-5 COLLET CLOSER**



**M16C-5 & M3J-5 COLLET CLOSER**



**P5C-5 COLLET CLOSER**



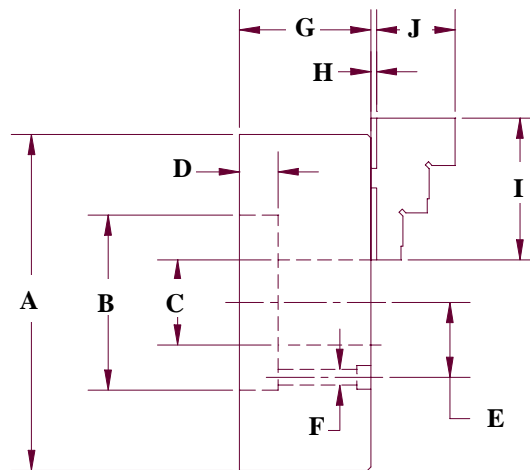
**CK-6,8,10,12 etc.... 3 OR 4 JAW**



**CHUCK ADAPTER**

# WORKHOLDING

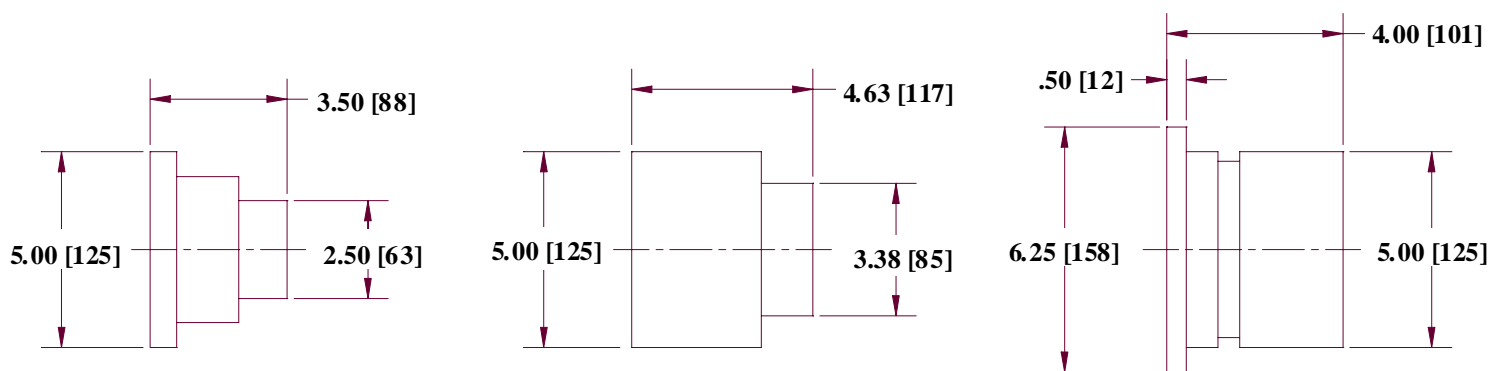
**SCROLL CHUCK  
SHOWN AS 3 JAW  
4 & 6 JAW AVAILABLE**



NOTE: ALL DIMENSIONS IN [ ..... ] ARE METRIC UNITS

MODEL	A	B	C	D	E	F	G	H	I	J
CK-6	6.00 [152]	3.21 [79]	1.520 [38]	.688 [17]	2.671 [67]	.28 [7]	2.35 [59]	.10 [2]	2.53 [64]	1.40 [35]
CK-8	8.25 [209]	4.750 [120]	2.257 [57]	.750 [19]	3.750 [95]	.40 [10]	3.12 [79]	.17 [4]	3.56 [90]	1.87 [47]
CK-10	10.00 [254]	6.375 [161]	2.810 [71]	.800 [20]	2.188 [55]	.46 [11]	3.50 [88]	.16 [4]	3.75 [95]	2.37 [60]
CK-12	12.00 [304]	7.906 [200]	3.257 [82]	.875 [22]	2.625 [66]	.53 [13]	4.00 [101]	.16 [4]	4.37 [111]	2.37 [60]
CK-15	15.00 [381]	11.781 [299]	4.250 [107]	1.125 [28]	3.375 [85]	.65 [16]	5.78 [146]	.28 [7]	5.54 [140]	3.27 [83]
CK-18	18.00 [457]	11.781 [299]	5.025 [127]	1.125 [28]	3.375 [85]	.65 [16]	5.78 [146]	.28 [7]	5.54 [140]	3.27 [83]
CK-21	21.00 [533]	16.030 [407]	7.025 [178]	1.188 [30]	4.625 [117]	.78 [19]	6.25 [158]	.28 [7]	5.54 [140]	3.27 [83]
CK-24	24.00 [609]	16.030 [407]	7.025 [178]	1.188 [30]	4.625 [117]	.78 [19]	6.53 [165]	.25 [6]	5.54 [140]	3.27 [83]

**5C, 16C & 3J MANUAL COLLET CLOSER  
P5C PNEUMATIC COLLET CLOSER**



**THE M5C-5, M3J-5 AND M16C-5 MANUAL COLLET CLOSER ARE FOR USE ON ALL TROYKE TABLES. THE M5C-5 MANUAL COLLET CLOSER USES 5C COLLETS. THE M3J-5 MANUAL COLLET CLOSER USES 3J COLLETS. THE M16C-5 MANUAL COLLET CLOSER USES 16C COLLETS.**

**TO MOUNT THE COLLET CLOSERS TO TROYKE ROTARY TABLES USE THE (4) T-NUTS AND SOCKET HEAD CAP SCREWS INCLUDED IN THE KIT. TO TRAM THE COLLET CLOSER TRUE TO THE CENTER OF ROTATION OF THE ROTARY TABLE, SIMPLY GRIP A GROUND PIECE OF BAR STOCK IN THE COLLET THEN TRAM THE COLLET CLOSER IN TRUE BEFORE TIGHTENING THE (4) SOCKET HEAD CAP SCREWS.**