



**SPECIFICATIONS:**

MODEL	710-150	710-002	710-102(S)	710-004	710-104	710-230 (S)	710-300(S)
TABLE DIA.	6.69 (170)	8.26 (210)				9.06 (230)	12.20 (310)
ANGLE INDEX BY ONE FULL STROKE	45°	15°		90°		45°	45°
TOTAL INDEX CYLINDER STROKE	1.50 (38)	1.37 (35)		3.07 (78)		2.20 (56)	2.95 (75)
FORCE REQ'D. FOR CYLINDER STROKE Lbs (Kg)	66 (30)	132 (60)		176 (80)		88 (40)	242 (110)
SPINDLE BRAKING FORCE	One Ton					1.5 Ton	One Ton
SPINDLE THRU HOLE	1.45 (37)	0.64 (16.5)				2.28 (58)	2.04 (52)
SETTING POSITION	Horiz/Vert	Horiz/Vert	Vert	Horiz/Vert	Vert	Horiz/Vert	Vert
CENTER HEIGHT	4.72 (120)	5.31 (135)				5.71 (1.45)	7.28 (185)
TABLE CENTER HOLE RUNOUT	0.0004 (0.01) MAX						
TABLE SURFACE RUNOUT	0.0004 (0.01) MAX						
SQUARENESS	0.001 (0.03) MAX						
INDEXING ACCURACY	+/- 30 SECONDS					+/- 15 SEC	+/- 30 SEC
INDEXING SPEED (for full stroke move*)	APPROXIMATELY ONE SECOND MACHINE SPINDLE SPEED 200 Inch/Minute (5,000mm/Minute) MAX						
LOAD TOLERANCE (out of balance) Lbs (Kg)	18 (8)					15.4 (7)	18 (8)
MAX WORK LOAD CAPACITY (Vert. position) Lbs (Kg)	100 (45)	200 (91)				200 (91)	400 (182)
MAX WORK LOAD CAPACITY (Horiz. position) Lbs (Kg)	200 (91)	400 (182)				400 (182)	800 (363)
NET WEIGHT Lbs (Kg)	66 (30)	92 (42)	81 (37)	95 (43)	84 (38)	92 (42)	176 (80)

**\*Note:** If the workload is more than 18lbs. (8Kg) "out of balance" then it may be necessary to either reduce the machine spindle speed in depressing the index cylinder, or use a counterweight to balance the load. Counterweight kits available from stock.



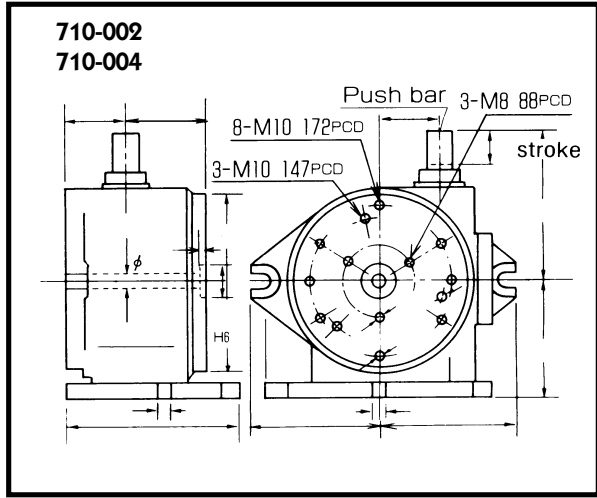
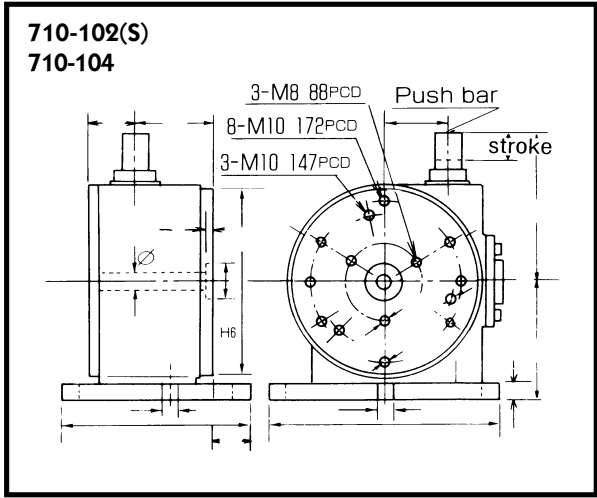
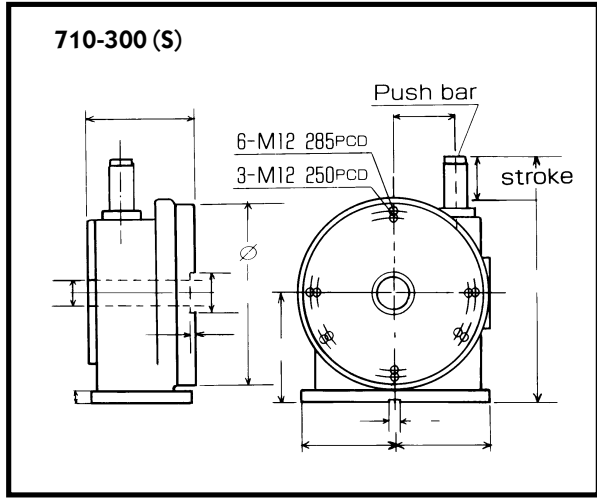
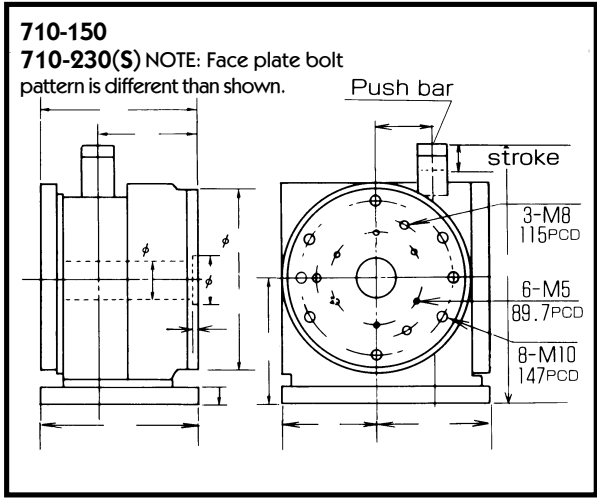
CNC ROTARY PRODUCTS

**SUPER RAPIDEX ACCESSORY CHART**

MODEL	710-150	710-002	710-102(S)	710-004	710-104	710-230(S)	710-300(S)
TAILSTOCK (Manual) ADJUSTABLE	553-300	553-301				553-301	553-311
3 JAW LATHE CHUCK	580-106	580-106 (direct mount) 585-108 (requires 710-108 adapter plate)				580-108	580-110 or 112
3 JAW AIR OPERATED CHUCK	583-006	583-006 (direct mount) 583-008 (requires 710-108 adapter plate)				583-008	583-010 or 012
5C AIR COLLET CLOSER AND DRAW TUBE	710-110	N/A					
6" (152mm) SPECIAL CUBE FIXTURE	N/A	710-109					N/A

Note: For dimensional information on the accessories listed above, see our WORKHOLDING section.

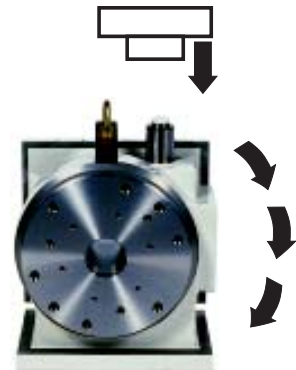
Note: Some other Workholding section accessories may be able to be adapted to the Super Rapidex's, call for more information.



Inch/(mm)

MODEL	A	B	C	D	E	F	G	H	I	J	K	L	M	N	O	P	Q
710-150	5.94 (151)	3.74 (95)	5.94 (151)	6.69 (170)	1.46 (37)	1.57 (40)	0.67 (17)	4.72 (120)	0.24 (6.2)	3.58 (91)	4.29 (109)	9.72 (247)	2.16 (55)	N/A	N/A	N/A	N/A
710-002	N/A	3.86 (98)	8.03 (204)	8.27 (210)	0.65 (16.5)	1.57 (40)	N/A	5.31 (135)	0.24 (6.2)	5.91 (150)	6.30 (160)	N/A	2.76 (70)	0.65 (16.5)	2.72 (69)	N/A	6.38 (162)
710-102	N/A	3.86 (98)	8.46 (215)	8.27 (210)	0.65 (16.5)	1.57 (40)	0.79 (20)	5.31 (135)	0.24 (6.2)	N/A	N/A	N/A	2.76 (70)	0.65 (16.5)	1.93 (49)	10.24 (260)	6.38 (162)
710-004	N/A	3.86 (98)	8.03 (204)	8.27 (210)	0.65 (16.5)	1.57 (40)	N/A	5.31 (135)	0.24 (6.2)	5.91 (150)	6.30 (160)	N/A	2.76 (70)	0.65 (16.5)	2.72 (69)	N/A	8.19 (208)
710-104	N/A	3.86 (98)	8.46 (215)	8.27 (210)	0.65 (16.5)	1.57 (40)	0.79 (20)	5.31 (135)	0.24 (6.2)	N/A	N/A	N/A	2.76 (70)	0.65 (16.5)	1.93 (49)	10.24 (260)	8.19 (208)
710-230	6.56 (166.5)	4.0 (101.5)	6.28 (159.5)	9.06 (230)	2.28 (58)	2.76 (70)	0.79 (20)	5.71 (145)	0.24 (6)	5.12 (130)	5.12 (130)	13.48 (342.5)	2.76 (70)	N/A	N/A	N/A	N/A
710-300	6.97 (177)	N/A	N/A	12.20 (310)	2.05 (52)	2.76 (70)	0.79 (20)	7.28 (185)	0.24 (6.2)	6.30 (160)	6.46 (164)	16.46 (418)	4.21 (107)	0.71 (18)	N/A	N/A	N/A

MODEL	R	S	T
710-150	N/A	1.50 (38)	N/A
710-002	N/A	1.38 (35)	0.65 (16.5)
710-102	1.46 (37)	1.38 (35)	0.65 (16.5)
710-004	N/A	3.07 (78)	0.65 (16.5)
710-104	1.46 (37)	3.07 (78)	0.65 (16.5)
710-230	N/A	2.20 (56)	N/A
710-300	N/A	2.95 (75)	N/A



*This illustration represents a machine spindle being used to depress the index cylinder of the Super Rapidex creating an index movement.*

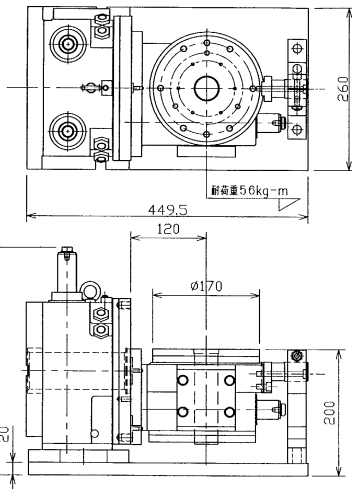
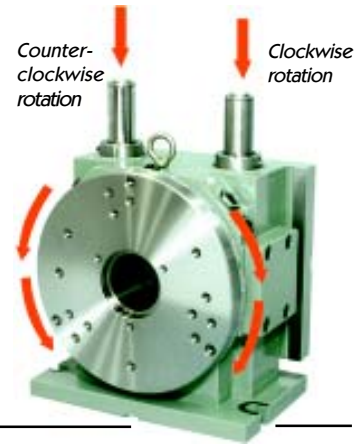
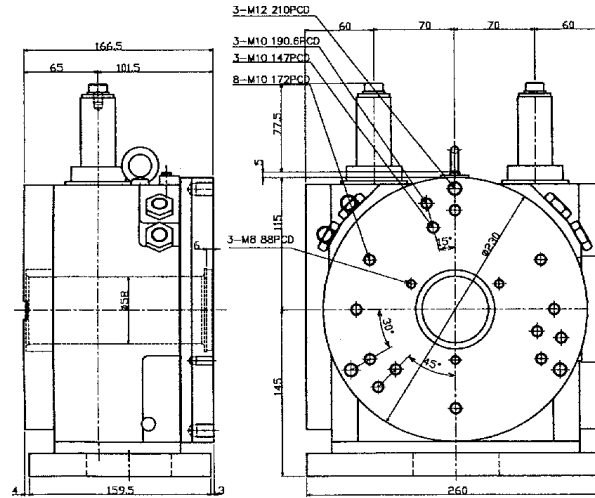
# SUPER RAPIDEX



710-230CS

## FEATURES:

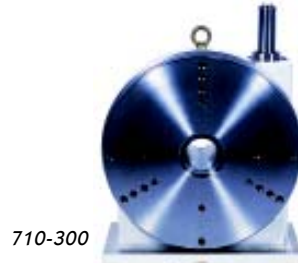
- ▶ Dual index cylinder offers clockwise and counter-clockwise rotation.
- ▶ No problem for off-center loads; no imbalance difficulties
- ▶ Multiples of 5° indexing with a full index cylinder stroke of 45°
- ▶ 1.5 ton braking torque by the dual positive locking mechanism
- ▶ Table diameter is 230mm (9.06")
- ▶ Large thru hole of 56mm (2.20")
- ▶ Setting position is horizontal or vertical
- ▶ Total weight: 105 lb (48Kg)



## 710-230CST

- ▶ The perfect tilting/rotary table featuring movement for the bi-directional tilt positioning
- ▶ The entire unit is mounted to a steel base mounting plate and includes a rigid end support
- ▶ Table surface is 170mm (6.69")

## OTHER MODELS



710-004 with 710-109 (cube)

