

# STANDARD TYPE BASIC INDEXING SPACER

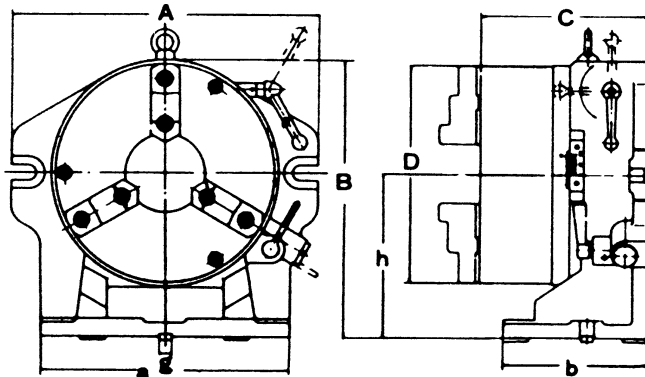


## FEATURES:

- ▶ Hardened and ground, 24 position master plate
  - ▶ Heavy duty shoe type spindle brake ensuring maximum rigidity for milling cuts
  - ▶ Precision ground steel spindle
  - ▶ Solid Meehanite casting, specially designed for milling, drilling and boring
  - ▶ Six masking plates included (2,3,4,6,8 and 12 divisions)
  - ▶ Chrome plated graduated ring with five minute Vernier reading
  - ▶ 3-jaw chuck with removable top jaws
  - ▶ Vertical and horizontal mounting positions
- An inspection report is included guaranteeing a high quality standard

## Standard Accessories:

- ▶ 3-jaw chuck with removable top jaws
- ▶ Six masking plates (2,3,4,6,8 and 12 position)
- ▶ Locating keys
- ▶ Test report and warranty card (1 year)



Inch/(mm)

STANDARDS OF ACCURACY	TOLERANCE (Max.)
Parallelism of table surface to base	0.0006 (0.015)
Axial movement of table surface	0.0006 (0.015)
True running of center boss	0.0004 (0.01)
Squareness of base to angle face, p/12"	0.0008 (0.02)
True running of center chuck	0.0012 (0.03)
Positioning Accuracy	45 seconds



## OPTIONAL ACCESSORIES

Part Number	Description	For Model
599-300	Tailstock	595-006
599-301	Tailstock	595-007

Inch/(mm)

MODEL #	A	B	C	D	a	b	h
595-006	10.23 (260)	8.58 (218)	6.15 (156.2)	6.57 (1.67)	8.66 (220)	5.12 (130)	5.12 (130)
595-007	12.28 (312)	10.12 (257)	6.82 (173.3)	8.27 (210)	10.16 (258)	5.83 (148)	6.10 (155)

MODEL #	Inner Jaw	Outer Jaw	Guide Block	Chuck Hole Diameter	Turret Hole Diameter	Net Wt. lbs./(kg)
595-006	0.16~1.65 (4~42)	0.39~6.14 (10~156)	0.63 (16)	1.73 (44)	1.42 (36)	71.5 (32.5)
595-007	0.16~2.44 (4~62)	0.39~7.09 (10~180)	0.63 (16)	2.48 (63)	2.48 (63)	110 (50)