



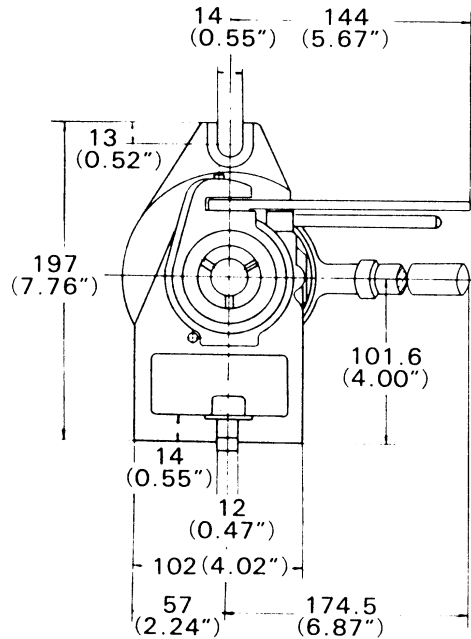
HORIZONTAL / VERTICAL 5C COLLET INDEX

550 series

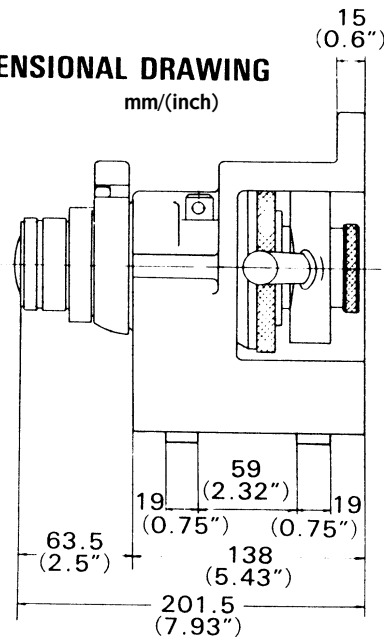
2 YEAR WARRANTY

FEATURES:

- ▶ Spindle is manufactured with a taper seat in body frame.
- ▶ Rapid opening and closing is performed with a level collet closer with a leverage ratio of 100 to 1.
- ▶ Convenient ratchet mounted on front of spindle provides rapid indexing. Index plate has 24 index locations, (15° increments); any of these may be masked off for greater variety in applications.



DIMENSIONAL DRAWING
mm/(inch)



SPECIFICATIONS		MAXIMUM VARIATION Inch/(mm)
Dividing spindle concentricity		0.0002 (0.005)
Cylindrical center bore (per 1") concentricity		0.0008 (0.02)
Spindle center line parallelism		0.0008 (0.02)
Base to face squareness		0.0008 (0.02)
Center slot to dividing spindle concentricity		0.0008 (0.02)
Lateral offset of center slot of dividing spindle		0.0008 (0.02)
Repeatability		10 seconds
Indexing Accuracy		30 seconds
Spindle Runout		0.0004 (0.01)
MODEL	DESCRIPTION	WEIGHT lbs (kg)
550-004	Collet index	25 (11.3)
550-102	20 Division master plate for 550-004	2 (0.9)
550-103	Screw fed tailstock	15 (6.8)

OPERATION
 Place workpiece into collet and adjust tightness with collet nut. Select indexing positions using index screw locators on master gear. Push the position lever to disengage the locator pin. Rotate the spindle to the desired position by depressing the index lever.