



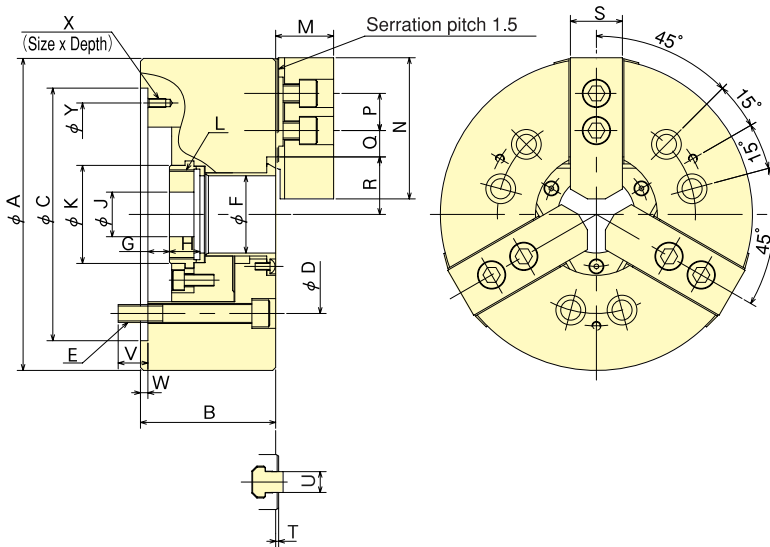
CHUCK

Large Thru-Hole High Speed Power Chuck B-200 series

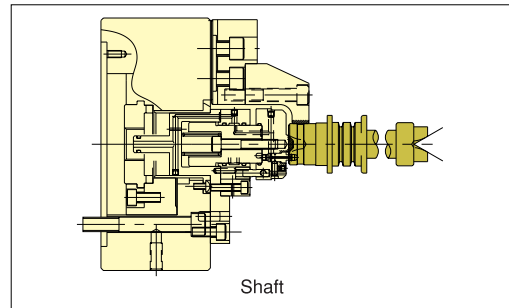
**Globally acknowledged
standard chuck**



Dimensional Drawings

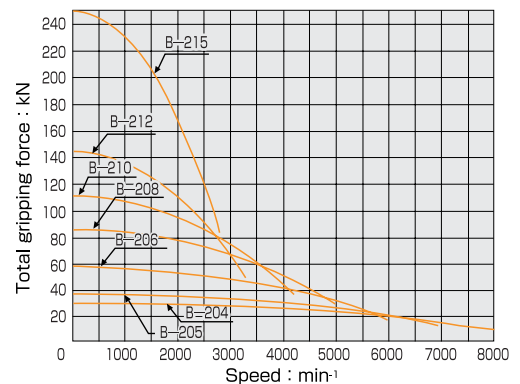


Gripping Example



Gripping Characteristic Graphs

※With standard blank soft top jaw.



Dimensions

※Mounting Bolt P. C. D for B-204 & B-205 : 120° Pitch : 3pcs. ※Blank draw nut equipped.

Model	A	B	C (H6)	D	E	F	G max.	G min.	H	J	K	L max.	M	N	P	Q max.	Q min.	R max.	R min.	S	T	U	V	W	X (3-)	Y
B-204	110	59	85	70.6	3-M10	26	3.5	- 6.5	17.5	12	38	M32x1.5	24	49.5	14	11.25	6.75	23	20.3	23	2	10	15.5	4	-	-
B-205	135	60	110	82.6	3-M10	33	1	- 9	20	12	45	M40x1.5	26	54	14	19.75	7.75	26.5	23.8	23	2	10	15	4	-	-
B-206	169	81	140	104.8	6-M10	45	11	- 1	19	20	60	M55x2.0	29	66	20	22.75	9.25	32	29.25	26	2	12	16	5	M6x10	116
B-208	210	91	170	133.4	6-M12	52	14.5	- 1.5	20.5	30	66	M60x2.0	39	95	25	29.75	14.75	38.7	35	35	2	14	20	5	M6x12	150
B-210	254	100	220	171.4	6-M16	75	8.5	-10.5	25	45	94	M85x2.0	43	110	30	33.75	14.25	51	46.6	40	2	16	22	5	M8x15	190
B-212	304	110	220	171.4	6-M16	91	8	-15	28	50	108	M100x2.0	51	111	30	45.75	15.75	61.3	56	50	2	21	23	6	M8x15	190
B-215	381	147	300	235.0	6-M20	100	23	0	35	50	120	M110x2.0	61	135	43	54.75	20.25	70	64.7	50	2	25.5	31	6	M10x16	260

Specifications

※Max. speed is shown using actual test data.

Model	Thru-Hole mm	Gripping range mm Max. Min.	Jaw Stroke (diameter) mm	Plunger Stroke mm	Max. Draw Bar Pull Force kN (kgf)	Max. Gripping Force kN (kgf)	Max. Speed min⁻¹ (r.p.m)	Net Weight with Soft top jaws kg	Moment of inertia kg·m²	Matching Cylinder	Max. pressure MPa(kgf/cm²)	Matching Hard top jaw	Matching Soft top jaw
B-204	26	110 7	5.4	10	14 (1428)	28.5 (2906)	8000	4	0.007	F0933H	2.80 (28.6)	HB04N1	SB04N1
B-205	33	135 12	5.4	10	17.5 (1784)	36 (3671)	7000	6.7	0.018	F0933H	3.43 (35.0)	HB04N1	SB05N1
B-206	45	169 16	5.5	12	22 (2243)	57 (5812)	6000	11.9	0.058	S1246	2.8 (28.6)	HB06B1	SB06L1A
B-208	52	210 13	7.4	16	34.8 (3549)	86 (8769)	5000	22.3	0.170	S1552	2.65 (27)	HB08A1	SB08B1
B-210	75	254 31	8.8	19	43 (4385)	111 (11319)	4200	34.5	0.315	S1875	2.7 (27.5)	HB10A1	SB10B1
B-212	91	304 34	10.6	23	55 (5608)	144 (14686)	3300	55.3	0.738	S2091	2.7 (27.5)	HB12N1	SB12N1
B-215	100	381 50	10.6	23	98 (9993)	249 (25391)	2800	116	2.20	F2511H	3.3 (33.7)	HB15N1	SB15N1



CHUCK

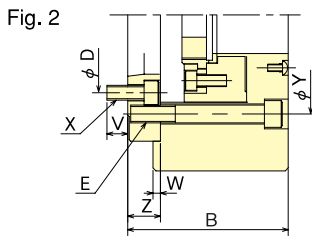
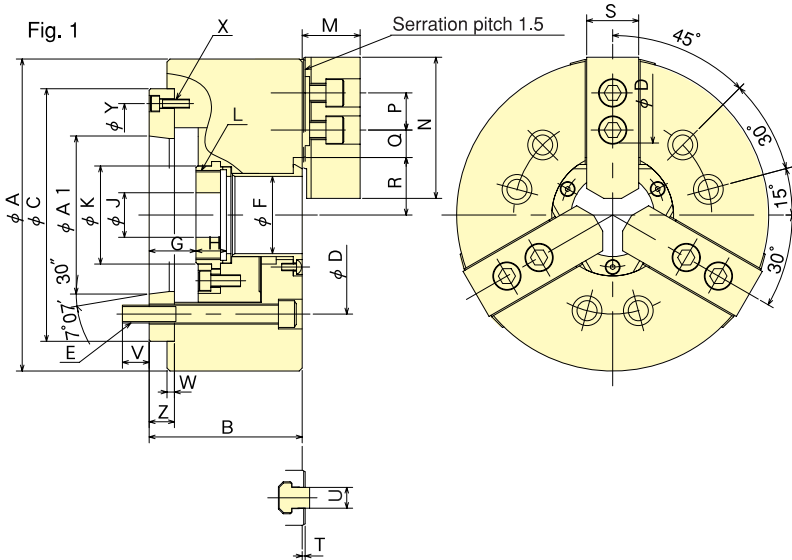
Large Thru-Hole High Speed Power Chuck (Direct Mount) B-200A series

Chuck Adaptor suit to Spindle Nose is equipped
Globally acknowledged standard chuck

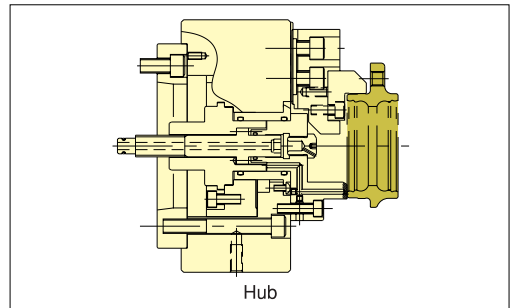


Standard Chuck

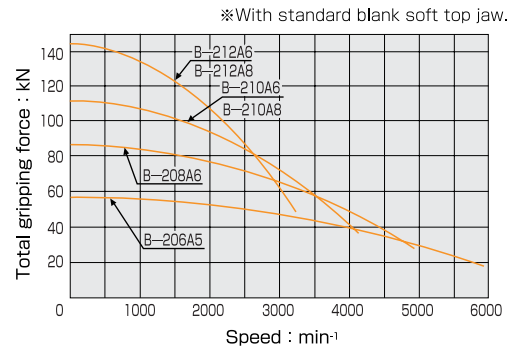
Dimensional Drawings



Gripping Example



Gripping Characteristic Graphs



Dimensions

※B-210A6, B-212A6 are referred to in Fig.2. ※Blank draw nut equipped.

Dimensions Model	A	B	C	D	E	F	G max.	G min.	H	J	K	L max.	M	N	P	Q max.	Q min.	R max.	R min.	S	T	U	V	W	X	Y	Z	A1
B-206A5	169	91	140	104.8	6-M10	45	26	14	19	20	60	M55×2.0	29	66	20	22.75	9.25	32	29.25	26	2	12	16	5	3-M 6	116	15	82.563
B-208A6	210	103	170	133.4	6-M12	52	31.5	15.5	20.5	30	66	M60×2.0	39	95	25	29.75	14.75	38.7	35	35	2	14	18	5	3-M 6	150	17	106.375
B-210A6	254	120	220	133.4	6-M16	75	33.5	14.5	25	45	94	M85×2.0	43	110	30	33.75	14.25	51	46.6	40	2	16	18.5	5	6-M12	171.4	25	106.375
B-210A8	254	113	220	171.4	6-M16	75	26.5	7.5	25	45	94	M85×2.0	43	110	30	33.75	14.25	51	46.6	40	2	16	24	5	3-M 8	190	18	139.719
B-212A6	304	129	220	133.4	6-M16	91	33	10	28	50	108	M90×2.0	51	111	30	45.75	15.75	61.3	56	50	2	21	18.5	6	6-M12	171.4	25	106.375
B-212A8	304	122	220	171.4	6-M16	91	26	3	28	50	108	M100×2.0	51	111	30	45.75	15.75	61.3	56	50	2	21	25	6	3-M 8	190	18	139.719

Specifications

※Max. speed is shown using actual test data.

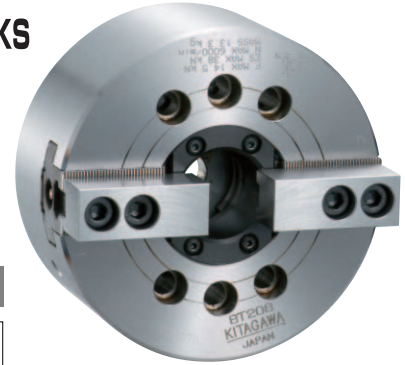
Specifications Model	Spindle nose size	Thru-Hole mm	Gripping range mm Max. Min.	Jaw Stroke (diameter) mm	Plunger Stroke mm	Max. Draw Bar Pull Force kN (kgf)	Max. Gripping Force kN (kgf)	Max. Gripping Force min ¹ (r.p.m)	Net Weight with Soft top jaws kg	Moment of inertia kg·m ²	Matching Cylinder	Max. pressure MPa(kgf/cm ²)	Matching Hard top jaw	Matching Soft top jaw
B-206A5	A2-5	45	169 16	5.5	12	22 (2243)	57 (5812)	6000	13.7	0.063	S1246	2.80 (28.6)	HB06B1	SB06L1A
B-208A6	A2-6	52	210 13	7.4	16	34.8(3549)	86 (8769)	5000	23.6	0.178	S1552	2.65 (27)	HB08A1	SB08B1
B-210A6	A2-6	75	254 31	8.8	19	43 (4385)	111(11319)	4200	41.5	0.325	S1875	2.7 (27.5)	HB10A1	SB10B1
B-210A8	A2-8	75	254 31	8.8	19	43 (4385)	111(11319)	4200	40.0	0.323	S1875	2.7 (27.5)	HB10A1	SB10B1
B-212A6	A2-6	91	304 34	10.6	23	55 (5608)	144(14684)	3300	67.0	0.780	S2091	2.7 (27.5)	HB12N1	SB12N1
B-212A8	A2-8	91	304 34	10.6	23	55 (5608)	144(14684)	3300	64.0	0.765	S2091	2.7 (27.5)	HB12N1	SB12N1



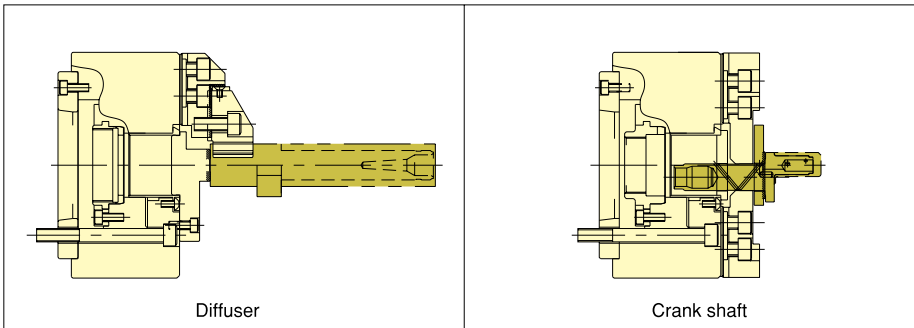
CHUCK

Large Thru-Hole High Speed Power Chuck BT200 series

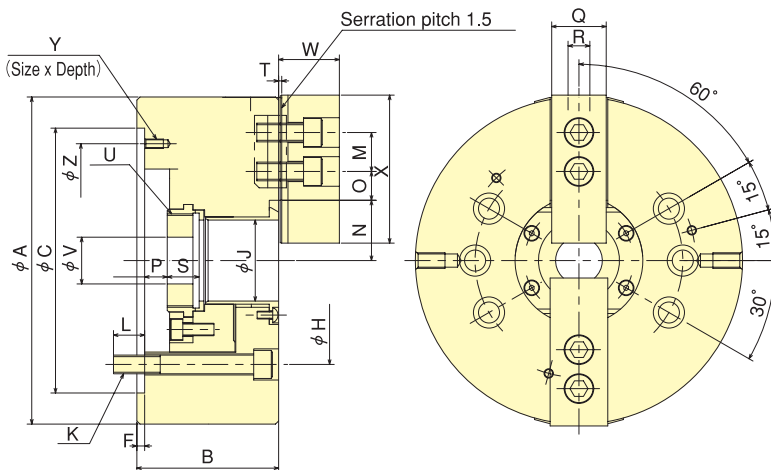
Optimum BT200 chuck for gripping irregular shaped works



Gripping Examples

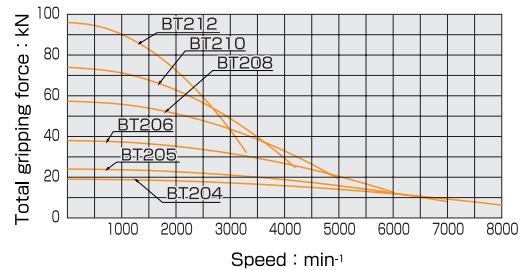


Dimensional Drawings



Gripping Characteristic Graphs

※With standard blank soft top jaw.



Dimensions ※Mounting bolt P. C. D. for BT204 & BT205 : each 60° from jaw center : 4 pcs. ※Blank draw nut equipped.

Model	A	B	C (H6)	F	H	J	K	L	M	N max.	N min.	O max.	O min.	P max.	P min.	Q	R	S	T	U max.	V	W	X	Y	Z
BT204	110	59	85	4	70.6	26	4-M10	15.5	14	23	20.3	11.25	6.75	3.5	-6.5	23	10	17.5	2	M32x1.5	12	24	49.5	-	-
BT205	135	60	110	4	82.55	33	4-M10	15	14	26.5	23.8	19.75	7.75	1	-9	23	10	20	2	M40x1.5	12	26	54	-	-
BT206	169	81	140	5	104.8	45	6-M10	16	20	32	29.25	22.75	9.25	11	-1	26	12	19	2	M55x2.0	20	29	66	M6x10	116
BT208	210	91	170	5	133.4	52	6-M12	20	25	38.7	35	30	15	14.5	-1.5	35	14	20.5	2	M60x2.0	30	39	95	M6x12	150
BT210	254	100	220	5	171.4	75	6-M16	22	30	51	46.6	34	14.5	8.5	-10.5	40	16	25	2	M85x2.0	45	43	110	M8x15	190
BT212	304	110	220	6	171.4	91	6-M16	23	30	61.3	56	45.75	15.75	8	-15	50	21	28	2	M100x2.0	50	51	111	M8x15	190

Specifications

※Max speed is shown using actual test data.

Model	Thru-Hole mm	Gripping range mm Max. Min.	Jaw Stroke (diameter) mm	Plunger Stroke mm	Max. Draw Bar Pull Force kN (kgf)	Max. Gripping Force kN (kgf)	Max. Speed min⁻¹ (r.p.m)	Net Weight with Soft top jaws kg	Moment of inertia kg·m²	Matching Cylinder	Max. pressure MPa (kgf/cm²)	Matching Soft top jaw
BT204	26	110 7	5.4	10	9.3 (948)	19 (1937)	8000	3.8	0.006	F0933H	1.94 (19.8)	SB04N1T
BT205	33	135 12	5.4	10	11.7 (1193)	24 (2447)	7000	6.5	0.017	F0933H	2.38 (24.3)	SB05N1T
BT206	45	169 14	5.5	12	14.5 (1479)	38 (3875)	6000	11.5	0.056	S1246	1.85 (18.9)	SB06L1T
BT208	52	210 14	7.4	16	23.2 (2366)	57.3 (5843)	5000	21.3	0.165	S1552	1.80 (18.4)	SB08A1T
BT210	75	254 31	8.8	19	28.5 (2906)	74 (7546)	4200	33.5	0.308	S1875	1.80 (18.4)	SB10A1T
BT212	91	304 34	10.6	23	36.7 (3742)	96 (9789)	3300	52	0.70	S2091	1.81 (18.5)	SB12N1T